

Shikshan Prasark Mandal's

*Smt. Ratnaprabhadevi Mohite Patil College of Home
Science for Women, Akluj, Tal- Malshiras, Dist-
Solapur. 413101 (Maharashtra)*

**Submission of
Internal Annual Quality Assurance Report
(AQAR)
(Revised in January 2014)**

To



राष्ट्रीय मूल्यांकन एवं प्रत्यायन परिषद्

विश्वविद्यालय अनुदान आयोग का स्वायत्त संस्थान

NATIONAL ASSESSMENT AND ACCREDITATION COUNCIL

*An Autonomous Institution of the University Grants Commission
P. O. Box. No. 1075, Opp: NLSIU, Nagarbhavi, Bangalore - 560 072 India*

The Annual Quality Assurance Report (AQAR) of the IQAC

Part – A

I. Details of the Institution

1.1 Name of the Institution

Smt. Ratnaprabhadevi Mohite Patil College of Home Science for Women

1.2 Address Line 1

Ratnai Sankul near Shivshankar Bazar

Address Line 2

Sadubhau Chowk

City/Town

Akluj

State

Maharashtra

Pin Code

413101

Institution e-mail address

srmphomesc@rediffmail.com

Contact Nos.

02185-227427

Name of the Head of the Institution:

Dr. Surve Rahul Nivruti

Tel. No. with STD Code:

02185-227427

Mobile:

09423125817

Name of the IQAC Co-ordinator:

Dr. Bhosale Bharati Sambhajirao

Mobile:

09421069664

IQAC e-mail address:

srmphomesc@rediffmail.com

1.3 NAAC Track ID

12646

1.4 NAAC Executive Committee No. & Date:

EC/64/A&A/187 dt January 5, 2013

1.5 Website address:

www.srmphomesc.org

Web-link of the AQAR:

--

1.6 Accreditation Details

Sl. No.	Cycle	Grade	CGPA	Year of Accreditation	Validity Period
1	1 st Cycle	B	2.60	2012-13	Jan 4,2018

1.7 Date of Establishment of IQAC:

20/06/2012

1.8 AQAR for the year

2014-15

1.9 Details of the previous year's AQAR submitted to NAAC after the latest Assessment and Accreditation by NAAC (*for example AQAR 2010-11 submitted to NAAC on 12-10-2011*)

- i. AQAR 2013-14 submitted to NAAC on 04-09-2014

1.10 Institutional Status

University State Central Deemed Private

Affiliated College Yes No

Constituent College Yes No

Autonomous college of UGC Yes No

Regulatory Agency approved Institution Yes No

(eg. AICTE, BCI, MCI, PCI, NCI)

Type of Institution Co-education Men Women

Urban Rural Tribal

Financial Status Grant-in-aid UGC 2(f) UGC 12B

Grant-in-aid + Self Financing Totally Self-financing

1.11 Type of Faculty / Programme

Arts Science Commerce Law PEI (Phys Edu)

TEI (Edu) Engineering Health Science Management

Others (Specify)

Home Science

1.12 Name of the Affiliating University (for the Colleges)

S.N.D.T. Women's University Mumbai

1.13 Special status conferred by Central/ State Government-- UGC/CSIR/DST/DBT/ICMR etc

Autonomy by State/Central Govt. / University	<input type="text" value="-"/>		
University with Potential for Excellence	<input type="text" value="-"/>	UGC-CPE	<input type="text" value="-"/>
DST Star Scheme	<input type="text" value="-"/>	UGC-CE	<input type="text" value="-"/>
UGC-Special Assistance Programme	<input type="text" value="-"/>	DST-FIST	<input type="text" value="-"/>
UGC-Innovative PG programmes	<input type="text" value="-"/>	Any other (<i>Specify</i>)	<input type="text" value="-"/>
UGC-COP Programmes	<input type="text" value="-"/>		

2. IQAC Composition and Activities

2.1 No. of Teachers	<input type="text" value="08"/>
2.2 No. of Administrative / Technical staff	<input type="text" value="02"/>
2.3 No. of students	<input type="text" value="02"/>
2.4 No. of Management representatives	<input type="text" value="01"/>
2.5 No. of Alumni	<input type="text" value="01"/>
2. 6 No. of any other stakeholder and Community representatives	<input type="text" value="01"/>
2.7 No. of Employers/ Industrialists	<input type="text" value="--"/>
2.8 No. of other External Experts	<input type="text" value="--"/>
2.9 Total No. of members	<input type="text" value="15"/>

2.10 No. of IQAC meetings held 02

2.11 No. of meetings with various stakeholders: No. Faculty
Non-Teaching Staff, Students Alumni Others

2.12 Has IQAC received any funding from UGC during the year? Yes No

If yes, mention the amount

2.13 Seminars and Conferences (only quality related)

(i) No. of Seminars/Conferences/ Workshops/Symposia organized by the IQAC

Total Nos. International National State Institution Level

(ii) Themes

Skill development Workshop on Macrame articles

2.14 Significant Activities and contributions made by IQAC

IQAC Coordinator Attended National conference on IQAC and presented paper

2.15 Plan of Action by IQAC/Outcome

The plan of action chalked out by the IQAC in the beginning of the year towards quality enhancement and the outcome achieved by the end of the year *

Plan of Action	Achievements
Annexure I	Annexure II

* Attach the Academic Calendar of the year as Annexure.

2.15 Whether the AQAR was placed in statutory body Yes No

Management Syndicate Any other body

Provide the details of the action taken

Part – B

Criterion – I

I. Curricular Aspects

1.1 Details about Academic Programmes

Level of the Programme	Number of existing Programmes	Number of programmes added during the year	Number of self-financing programmes	Number of value added / Career Oriented programmes
PhD	-	-	-	-
PG	-	-	-	-
UG	03	-	-	-
PG Diploma	-	-	-	-
Advanced Diploma	-	-	-	-
Diploma	-	-	-	-
Certificate	01	-	-	-
Others	-	-	-	-
Total	04	-	-	-
Interdisciplinary	-	-	-	-
Innovative	-	-	-	-

1.2 (i) Flexibility of the Curriculum: CBCS/Core/Elective option / Open options

(ii) Pattern of programmes:

Pattern	Number of programmes
Semester	01
Trimester	--
Annual	02

1.3 Feedback from stakeholders* Alumni Parents Employers Students

(On all aspects)

Mode of feedback : Online Manual Co-operating schools (for PEI)

*Analysis of the feedback in the Annexure-III

1.4 Whether there is any revision/update of regulation or syllabi, if yes, mention their salient aspects.

Yes University restructure syllabi every 5th year it's been lastly restructured in 2013-14

1.5 Any new Department/Centre introduced during the year. If yes, give details.

-

Criterion – II

2. Teaching, Learning and Evaluation

2.1 Total No. of permanent faculty

Total	Asst. Professors	Associate Professors	Professors	Others
08	06	--	--	02

2.2 No. of permanent faculty with Ph.D.

02

2.3 No. of Faculty Positions Recruited (R) and Vacant (V) during the year

Asst. Professors		Associate Professors		Professors		Others		Total	
R	V	R	V	R	V	R	V	R	V
06	01	-	-	-	-	02	01	08	02

2.4 No. of Guest and Visiting faculty and Temporary faculty

-	-	04
---	---	----

2.5 Faculty participation in conferences and symposia:

No. of Faculty	International level	National level	State level
Attended	01	07	01
Presented papers	01	05	01
Resource Persons	-	-	-

2.6 Innovative processes adopted by the institution in Teaching and Learning:

Use of ICT, Various Methods Viz Group Discussion, Projects, Assignments, Debate, Survey, Field visits, Presentations

2.7 Total No. of actual teaching days during this academic year

199

2.8 Examination/ Evaluation Reforms initiated by the Institution

Open Book Examination, Bar Coding, Photocopy, MCQ

2.9 No. of faculty members involved in curriculum restructuring/revision/syllabus development as member of Board of Study/Faculty/Curriculum Development workshop

02

--

--

2.10 Average percentage of attendance of students

87

2.11 Course/Programme wise
distribution of pass percentage:

Title of the Programme	Total no. of students appeared	Division					
		Distinction %	I %	II %	III %	ATKT/ Fail	Pass %
B.Sc (H.Sc) I yr	50	31	14	05	-	-	100
B.Sc (H.Sc) II yr	40	10	15	-	-	15	100
B.Sc(H.Sc)III yr	31	21	05	-	-	05	83.87

2.12 How does IQAC Contribute/Monitor/Evaluate the Teaching & Learning processes:

- Encouraging faculty to Adopt innovative methods and techniques
- Continuous observation
- Submission of reports
- Suggestions to faculty
- Meetings and discussions
- Implementation of decisions

2.13 Initiatives undertaken towards faculty development

<i>Faculty / Staff Development Programmes</i>	<i>Number of faculty benefitted</i>
Refresher courses	-
UGC – Faculty Improvement Programme	-
HRD programmes	-
Orientation programmes	-
Faculty exchange programme	-
Staff training conducted by the university	-
Staff training conducted by other institutions	-
Summer / Winter schools, Workshops, etc.	-
Others	-

2.14 Details of Administrative and Technical staff

Category	Number of Permanent Employees	Number of Vacant Positions	Number of permanent positions filled during the Year	Number of positions filled temporarily
Administrative Staff	10	-	-	-
Technical Staff	-	-	-	-

Criterion – III

3. Research, Consultancy and Extension

3.1 Initiatives of the IQAC in Sensitizing/Promoting Research Climate in the institution

Research committee
Research based projects given to students
Promoting faculty for participation and presentation of research papers in seminar and conferences and publishing research papers in Journals

3.2 Details regarding major projects NA

	Completed	Ongoing	Sanctioned	Submitted
Number	-	-	-	-
Outlay in Rs. Lakhs	-	-	-	-

3.3 Details regarding minor projects NA

	Completed	Ongoing	Sanctioned	Submitted
Number	-	-	-	-
Outlay in Rs. Lakhs	-	-	-	-

3.4 Details on research publications

	International	National	Others
Peer Review Journals	02	--	--
Non-Peer Review Journals	-	01	--
e-Journals	02	--	--
Conference proceedings	01	03	--

3.5 Details on Impact factor of publications:

Range Average h-index Nos. in SCOPUS

3.6 Research funds sanctioned and received from various funding agencies, industry and other organisations

Nature of the Project	Duration Year	Name of the funding Agency	Total grant sanctioned	Received
Major projects	-	-	-	-
Minor Projects	-	-	-	-
Interdisciplinary Projects	-	-	-	-
Industry sponsored	-	-	-	-
Projects sponsored by the University/ College	-	-	-	-
Students research projects <i>(other than compulsory by the University)</i>	-	-	-	-
Any other(Specify)	-	-	-	-
Total	-	-	-	-

3.7 No. of books published i) With ISBN No. Chapters in Edited Books

ii) Without ISBN No.

3.8 No. of University Departments receiving funds from

UGC-SAP CAS DST-FIST
DPE DBT Scheme/funds

3.9 For colleges

Autonomy CPE DBT Star Scheme
INSPIRE CE Any Other (specify)

3.10 Revenue generated through consultancy

3.11 No. of conferences

organized by the Institution

Level	International	National	State	University	College
Number	-	-	-	-	-
Sponsoring agencies	-	-	-	-	-

3.12 No. of faculty served as experts, chairpersons or resource persons

3.13 No. of collaborations

International National Any other

3.14 No. of linkages created during this year

3.15 Total budget for research for current year in lakhs :

From Funding agency From Management of University/College

Total

3.16 No. of patents received this year

Type of Patent		Number
National	Applied	-
	Granted	-
International	Applied	-
	Granted	-
Commercialised	Applied	-
	Granted	-

3.17 No. of research awards/ recognitions received by faculty and research fellows
Of the institute in the year

Total	International	National	State	University	Dist	College
01	-	01	-	-	-	-

3.18 No. of faculty from the Institution who are Ph. D. Guides and students registered under them

-

-

3.19 No. of Ph.D. awarded by faculty from the Institution

-

3.20 No. of Research scholars receiving the Fellowships (Newly enrolled + existing ones)

JRF - SRF - Project Fellows - Any other -

3.21 No. of students Participated in NSS events:

University level 02 State level -
National level - International level -

3.22 No. of students participated in NCC events:

University level - State level -
National level - International level -

3.23 No. of Awards won in NSS:

University level - State level -
National level - International level -

3.24 No. of Awards won in NCC:

University level - State level -
National level - International level -

3.25 No. of Extension activities organized

University forum College forum
NCC NSS Any other

3.26 Major Activities during the year in the sphere of extension activities and Institutional Social Responsibility

- Workshop for pregnant and lactating mothers
- Workshop for preschool and anganwadi teachers
- Skill development workshop for H.Sc students
- Blood donation camp
- Tree plantation
- Swachata abhiyan
- Workshop for Anganwadi sevika

Criterion – IV

4. Infrastructure and Learning Resources

4.1 Details of increase in infrastructure facilities:

Facilities	Existing	Newly created	Source of Fund	Total
Campus area	12.87 acres	-	-	-
Class rooms	03	-	-	-
Laboratories	07	-	-	-
Seminar Halls	01	-	-	-
No. of important equipments purchased (\geq 1-0 lakh) during the current year.	-	-	-	-
Value of the equipment purchased during the year (Rs. in Lakhs)	-	-	-	-
Others	-	-	-	-

4.2 Computerization of administration and library

Yes

4.3 Library services:

	Existing		Newly added		Total	
	No.	Value	No.	Value	No.	Value
Text Books	1708	464628/-	43	9500/-	1751	474128/-
Reference Books	641	106507/-	07	1400/-	648	107907/-
e-Books	N-LIST Programme	10000/-		5000/-		15000/-
Journals	19	40759/-	02	17990/-	21	58749/-
e-Journals	N-LIST Programme					
Digital Database	S.N.D.T. Women's University Database	25500/-		15600/-		41100/-
CD & Video	196	45375/-	18	--	214	45375/-
Others (specify)	-	-	-	-	-	-

4.4 Technology up gradation (overall)

	Total Computers	Computer Labs	Internet	Browsing Centres	Computer Centres	Office	Departments	Others
Existing	23	11	06	01	-	02	03	01
Added	-	-	-	-	-	-	-	-
Total	-	-	-	-	-	-	-	-

4.5 Computer, Internet access, training to teachers and students and any other programme for technology upgradation (Networking, e-Governance etc.)

Internet access training programme for nonteaching staff
--

4.6 Amount spent on maintenance in lakhs :

i) ICT

Rs.0 .11791 /-

ii) Campus Infrastructure and facilities

Rs. 0.32391 /-

iii) Equipments

-

iv) Others

-

Total :

Rs. 0.44182 /-

Criterion – V

5. Student Support and Progression

5.1 Contribution of IQAC in enhancing awareness about Student Support Services

Student's representative in IQAC
Student council
Student feedback
Programmes organized by students

5.2 Efforts made by the institution for tracking the progression

Actions taken on suggestions
Encouraging students for participation in different activities

5.3 (a) Total Number of students

UG	PG	Ph. D.	Others
136	-	-	-

(b) No. of students outside the state

-

(c) No. of international students

-

Men	No	%	Women	No	%
	-	-		136	100

Last Year (2013-14)						This Year (2014-15)					
General	SC	ST	OBC	Physically Challenged	Total	General	SC	ST	OBC	Physically Challenged	Total
80	17	-	33	-	130	82	17	-	19	-	136

Demand ratio 76

Dropout % 8.4

5.4 Details of student support mechanism for coaching for competitive examinations (If any)

Activities: Issued Books
Guidance
Display of MPSC & other Exam advertisements
Guidance for online form filling

No. of students beneficiaries

20

5.5 No. of students qualified in these examinations

NET SET/SLET GATE CAT
 IAS/IPS etc State PSC UPSC Others

5.6 Details of student counselling and career guidance

Career guidance lectures on Career opportunities in Beauty parlour and Tourism for all students
 Counselling cell

No. of students benefitted

5.7 Details of campus placement

<i>On campus</i>			<i>Off Campus</i>
Number of Organizations Visited	Number of Students Participated	Number of Students Placed	Number of Students Placed
-	-	-	03

5.8 Details of gender sensitization programmes

Essay competition on Social insecurity: Obstacles in women development conducted on 18.12.2014
 Speech on Status of women conducted on 18.12.2014
 Poster making on Empowerment of women conducted on 26.12.2014
 Exhibition using posters on Empowerment of women for rural women conducted at Malewadi on 26.12.2014

5.9 Students Activities

5.9.1 No. of students participated in Sports, Games and other events

State/ University level National level International level

No. of students participated in cultural events

State/ University level National level International level

5.9.2 No. of medals /awards won by students in Sports, Games and other events

Sports: State/ University level National level International level

Cultural: State/ University level National level International level

5.10 Scholarships and Financial Support

	Number of students	Amount
Financial support from institution	-	-
Financial support from government	36	Rs.388150/-
Financial support from other sources	-	-
Number of students who received International/ National recognitions	-	-

5.11 Student organised / initiatives

Fairs : State/ University level National level International level

Exhibition: State/ University level National level International level

5.12 No. of social initiatives undertaken by the students

5.13 Major grievances of students (if any) redressed: _____ - _____

Criterion – VI

6. Governance, Leadership and Management

6.1 State the Vision and Mission of the institution

Vision: Tewa Sada Dnyanmaya Pradeep
Mission: Empowerment of Rural Women for Empowerment of Society

6.2 Does the Institution has a management Information System

Yes

6.3 Quality improvement strategies adopted by the institution for each of the following:

6.3.1 Curriculum Development

Attended meeting and workshop on Curriculum restructure

6.3.2 Teaching and Learning

Various techniques and teaching aids used for teaching and learning
Preparation of various teaching aids viz PPT, Models, Charts and Posters
Use of online videos and interactive multimedia
Field trips, Group discussions, Presentations, Projects, Assignments

6.3.3 Examination and Evaluation

Examination on each module
Continuous evaluation
Preliminary examination for each semester

6.3.4 Research and Development

Encouraging staff to participate in research activities
Modular system

6.3.5 Library, ICT and physical infrastructure / instrumentation

Subscription of magazines and Journals
Prepare ICT for teaching
Maintenance of existing infrastructure

6.3.6 Human Resource Management

Attendance of faculty in Seminars, Conference and Workshops
Completion of orientation programme /Refresher course

6.3.7 Faculty and Staff recruitment

Appointment of CHB teachers as per need
Invited guest lecturers for specific topics

6.3.8 Industry Interaction / Collaboration

Preschools, Anganwadi, Rural Hospital, Blood Bank,
Cooperative Milk Industry, Cooperative Bank,
Financial Institute

6.3.9 Admission of Students

- Campaigning, Banners and pamphlets, Counselling
- Admission of students from different strata of society
- Encouraged students for readmission in the course
- Counselling of students and parents for continuation of education
- Exhibition for junior college students and parents

6.4 Welfare schemes for

Teaching	Sevak kalyan Nidhi Insurance scheme
Non teaching	Sevak kalyan Nidhi Insurance scheme
Students	Vidyathri vima

6.5 Total corpus fund generated

-

6.6 Whether annual financial audit has been done

Yes

No

6.7 Whether Academic and Administrative Audit (AAA) has been done?

Audit Type	External		Internal	
	Yes/No	Agency	Yes/No	Authority
Academic	-	-	Yes	University
Administrative	-	-	Yes	Principal

6.8 Does the University/ Autonomous College declare results within 30 days?

For UG Programmes

Yes

No

For PG Programmes

Yes

No

6.9 What efforts are made by the University/ Autonomous College for Examination Reforms?

- University exam for S.Y from Academic year 2013-14
- Online question papers on portal 15 to 30 min prior to exam
- Examination forms filled on portal
- Online Hall tickets
- Syllabus restructured in modular form
- Each module is evaluated based on practical approach

6.10 What efforts are made by the University to promote autonomy in the affiliated/constituent colleges?

University calls for proposals to be submitted to UGC under the scheme of College for Potential Excellence

6.11 Activities and support from the Alumni Association

- Visits to college
- Encourage students for further studies
- Participate in counselling for admissions
- Invited and participated in various programmes

6.12 Activities and support from the Parent – Teacher Association

- Meetings
- Suggestions
- Feedback

6.13 Development programmes for support staff

- Training for online admission process clerks
- Workshop on use of computers in office work

6.14 Initiatives taken by the institution to make the campus eco-friendly

- Tree plantation
- Cleaning premises
- Workshops on Eco friendly dyes and materials
- Workshops on temple waste management
- Lecture
- Submission of project report in the form of PPT only
- Moving on to paperless work

Criterion – VII

7. Innovations and Best Practices

7.1 Innovations introduced during this academic year which have created a positive impact on the functioning of the institution. Give details.

- Workshop on macramé articles for the development of entrepreneurial skill of students
- Exhibition of articles made by students and selling it to create awareness regarding course in the community
- Fashion Show Competition on societal issues
- Distribution of Handbills about Health Awareness in Annual Function

7.2 Provide the Action Taken Report (ATR) based on the plan of action decided upon at the beginning of the year

Annexure IV

7.3 Give two Best Practices of the institution

- Workshop on natural dyes
- Baby cloth bank toy and book bank
- Balmelawa
- Development and distribution of nutritious food
- Canteen run by students
- Poster exhibition on Anti ragging
- Youth Day Celebration
- Display of English words

7.4 Contribution to environmental awareness / protection

- Rally
- Street play
- Tree plantation
- Swachata abhiyan

7.5 Whether environmental audit was conducted? Yes No

7.6 Any other relevant information the institution wishes to add. (for example SWOT Analysis)

Strength: College received UGC recognition of 2F & 12B

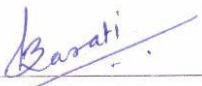
Weakness:

- Less student strength: Campaigning was done by various methods for increase in student strength
- Lack of interactions with academic peers : Organized leadership camp and encouraged student to participate in various events organized by university
- Website under construction: Website construction is in progress
- Adhon courses: Faculty is working on Adhon courses

8. Plans of institution for next year

Annexure V

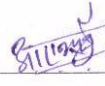
Name *Dr. Bhosale Bharati Sambhajirao*



Signature of the Coordinator, IQAC

IQAC Coordinator
Smt. Ratnaprabhadevi Mohite-Patil
College Of Home Science For Women
Akluj Tal. Malshiras Dist. Solapur

Name *Dr Surve Rahul Nivruti*



Signature of the Chairperson, IQAC

PRINCIPAL
Smt. Ratnaprabhadevi Mohite-Patil
College of Home Science for Women
Akluj Tal. Malshiras Dist Solapur



Annual Planning for Academic year 2014-15

MONTH : JUNE 2014

Sr. No.	Date	Activity	Class	Department
		ADMISSION PROCESS		
		COMMENCEMENT OF SEM-I,III&V		
	9.06.14	STAFF MEETING : ACADEMIC CALENDER TIME TABLE, TEACHER'S DIARY, ADMISSION,COLLEGE INTERNAL AND UNI. EXAM; PROSPECTUS.		
	13.06.14	MEETING: 1.IQAC2.SWOC		
	14.06.14	STAFF SECRETARY AND STAFF ACADEMY, UGC PROPOSAL AND CIRCULAR, UNI. AFFILIATION		
	23.06.14	BC. CELL AND STANDING COMMITTEE, STUDENT COUNCIL, COMPETATIVE EXAM, PLACEMENT CELL & ENTREPRENEURSHIP DEV; PUBLICITY STUDENT WALL PAPER AND EXT. ACTIVITY.		
	24.06.14	RESEARCH , ANTIRAGGING, COLLEGE MAGAZINE COMMITTEE, PARENT & ALUMNAI ASSOCIATION		
	25.06.14	PLANNING COMMITTEE, TEACHING AID, DISCIPLINE COMM, CAMPUS MAINTENANCE COMM, LADIES ROOM ADMINISTRATION		
	28.06.14	HEALTH CENTRE, FEEDBACK, COMPUTER EDUCATION AND WEBSITE UPGRADATION, REMEDIAL COACHING.		
	28.06.14	CULTURAL: DEATH ANN. OF SMT. RATNAPRABHADEVI MOHITE PATIL		
	30.06.14	STOCK MAINTAINANCE, LIBRARY ADVISORY COMM. YCMOU STUDY CENTER,GYMKHANA & SPORTS.		

MONTH : JULY 2014

Sr. No.	Date	Activity	Class	Department
	05.07.14	COUNSELLING COMMITTEE		
	07.07.14	MEETING: 2. SEXUAL HARRASSEMENT PREVENTION COMM. 3. NSS ADVISORY COMM. 3.CULTURAL COMM.		
	07.07.14	ORIENTATION TO : HUMAN DEV. : LIBRARY. : SCIENCE	F.Y.	HD, FRM , COMP.

		:COMPUTERS : FRM		
	08.07.14	MEETING: 1.GRIEVANCE REDRESSAL CELL. 2. HOME SCI. ASSOCIATION. 3.HOSTEL		
	08.07.14	ORIENTATION TO :EXTENSION EDUCATION : NUTRITION :TEXTILE SCIENCE :SPORTS :N.S.S. Y.C.M.O.U.	F.Y.	E.E. T.C. FSN
	23.07.14	HD:WORKSHOP – PRENTIVE MEASURES FOR PROTECTING CHILDREN FROM ACCIDENTS.	T.Y.&F.Y	HD
	26.07.14	HD: COMPITION: POSTER MAKING – EVE TEASING	ALL	HD
	11.07.14	WORKSHOP : ECOFRIENDLY GARMENT USING NATURAL DYE.	S.Y.	TEXT. SC.
	17.07.14	SELECTION OF NSS VOLENTEERS AND ADMISSION	S.Y.&T.Y.	N.S.S.
	18.07.14	MEDICAL CHECKUP	F.Y.	SCI.
	19.07.14	ORIENTATION BY PO TO NSS VOL.	S.Y. & T.Y.	N.S.S.
	22.07.14	WORKSHOP : VARIOUS Accessories with PPT presentation	F.Y.	TEXT. SC.
	01.07.14	VASANTRAO NAIK BIRTH ANNIVERSERY	ALL	CULTURAL
	23.07.14	BIRTH ANN. OF LOKMANYA BAAL GANGADHAR TILK	ALL	CULTURAL
	25/07/2014	SMT. RATNAPRABHADEVI MOHITE PATIL BIRTH ANNIVERSARY	ALL	CULURAL
	30.07.14	SEMINAR: SELF CARE EDUCATION	ALL	N.S.S.

MONTH: AUGUST 2014

Sr. No.	Date	Activity	Class	Department
	01/08/2014	ANNABHAU SATHE BIRTH ANNIVERSARY	ALL	CULTURAL
	02.08.14	TREE PLANTATION	F.Y. & S.Y.	N.S.S.
	03/08/2014	KRANTISINH NANA PATIL BIRTH ANNIVERSARY	ALL	CULTURAL
	I WEEK 5.08.2014 06.08.2014	BREAST FEDING PROMOTION WEEK : POSTER MAKING COMPTN, WORKSHOP FOR PREGNANT & LACTATING MOTHERS AT MALEWADI AKLUJ, LECTURE, DEMONSTRATION & EXHIBITION	RURAL HOSPITAL, ANGANWADI WORKERS	NUTRITION & N.S.S.
	04.08.14	SEMINAR ON VARIOUS TRENDS IN ACCESSARIES WITH PPT PRESENTATION	F.Y.	TEXTILE
	16.08.14	POSTER MAKING COMPETITION	F.Y. &S.Y.	N.S.S.
	III WEEK	Hb ESTIMATION CAMP &	JJAMATA	SCIENCE

		SEMINAR ON SIMPLE RECIPIES TO ENHANCE Hb levels	KANYA PRASHALA, GIRLS' HOSTEL	
	II WEEK	PROJECTS & SURVEYS ON DIFFERENT TOPICS	F.Y.	SCIENCE
	12.08.14	WORKSHOP : VARIOUS FABRIC PAINTING TECHNS	STUDENTS OF MALEWADI CAMPUS	TEXTILE
	19.08.14	SKIT PRESENTATION: EFFECTS OF PEER GROUP: FOR LUXMIBAI KANYA PRASHALA STU. 5 TH TO 7 TH	F.Y	HD
		WORKSHOP : STREET PLAY	T.Y.	EXTENSION
	28.08.14	WORKSHOP : PREMARITAL COUNSELLING	S.Y.	HD
	IV WEEK	WORKSHOP ON INTERNET	ALL	COMPUTER
	20/08/2014	SADBHAVANA DIN GUEST LECTURE : THALASSEMIA	ALL	N.S.S.
	23 & 24/08/2014	YOUTH FESTIVAL AT SATARA	--	CULTURAL
	25.08.14	MEDICAL CHECKUP CAMP	ALL	N.S.S.
	IV WEEK	TEMPLE WASTE MANAGEMENT BY NSS VOL.	F.Y. & S.Y.	N.S.S.

MONTH : SEPTEMBER 2014

Sr. No.	Date	Activity	Class	Department
	24.09.14	WORKSHOP : PREPARING AND USING LOW COST TEACHING AIDS IN PRESCHOOL EDUCATION	T.Y.	HD
	I WEEK	UNIT TEST	ALL	EXAM
	03.09.14	DEMONSTRATION ON VARIOUS HAND AND MACHINE EMBROIDARY STITCHES	F.Y. & S.Y.	TEXTILE
	11.09.14	FABRIC PAINTING COMPETITION	ALL	TEXTILE
	10.09.14	WORKSHOP ON PRESENTATION SKILLS	S.Y./T.Y.	COMPUTER
	05/09/2014	TEACHERS' DAY CELEBRATIONS : EXPERIENTIAL PROJECT OF MANAGEMENT OF COLLEGE ACTIVITIES BY STUDENTS COMP : ELOCUTION	ALL	STUDENTS' COUNCIL & N.S.S.
	08.09.14	LCD PRESENTATION ON LITERACY AND RELATED ISSUES	ALL	N.S.S.
	10.09.14	FORMATION OF NATURE CLUB NATURE WALK NATURE TRIP	ALL	N.S.S.
	03.09.2014 04.09.2014 05.09.2014	NUTRITION WEEK : RECIPE COMPETITION : RALLY : VISIT TO JR COLLEGE STUDENTS	ALL JR.COLLEGE	NUTRITION
	IV WEEK	PRELIMINARY EXAMINATIONS	ALL	EXAM
	22.09.14	SEMINAR ON STRESS MANAGEMENT	ALL	N.S.S.
	24 TO	N.S.S. WEEK CELEBRATION ORIENTATION TO NSS VOL. BY	F.Y.& S.Y.	N.S.S.

	30.09.14	EXPERT		
	25.09.14	COMPETITION: DEBATE – CHANGING FAMILY PATTERNS	ALL	HD & N.S.S.
	30.09.14	COMP : FASHION SHOW ON NATIONAL INTEGRATION	ALL	TEXT & N.S.S.

MONTH : OCTOBER 2014

Sr. No.	Date	Activity	Class	Department
	01.10.14	EXHIBITION ON LITERATURE ON MAHATMA GANDHI	ALL	N.S.S.
	02.10.14	GANDHI JAYANTI	ALL	STUDENTS COUNCIL
	02.10.14	LALBAHADUR SHASHTRI JAYANTI	ALL	STUDENTS COUNCIL
	08.10.14	MAHARSHI WALMIKI JAYANTI	ALL	STUDENTS COUNCIL
	11.10.14	SEMINAR : FIRST AID	ALL	N.S.S.
	31/10/2014	INDIRA GANDHI DEATH ANNIVERSARY VALLABHBHAI PATEL BIRTH ANNIVERSARY	ALL	STUDENTS COUNCIL
	II WEEK	QUIZ COMPETN ON ENVIRONMENTAL ISSUES	JR COLLEGES IN VICINITY	SCIENCE
	II WEEK	UNIVERSITY EXAMINATION	ALL	
	18/10/2014	DIWALI MAHOTSAV	ALL	CULTURAL

MONTH : NOVEMBER 2014

Sr. No.	Date	Activity	Class	Department
	II WEEK	LECTURE ON TRAFIC RULES AND REGULATION	ALL	N.S.S.
	III WEEK	WORKSHOP : ON SELF DEFENCE	ALL	N.S.S.
	IV WEEK	COMPUTER IN DAY-TO-DAY LIFE	F.Y.	COMPUTER
	14/11/2014	BAL DIN	ALL	STUDENTS' COUNCIL
	19/11/2014	RASHTRIY EKATMATA DIN RALLY	ALL	STUDENTS' COUNCIL & N.S.S.
	26/11/2014	SAMVIDHAN DIN	ALL	STUDENTS' COUNCIL

MONTH : DECEMBER 2014

Sr. No.	Date	Activity	Class	Department
	I WEEK	FILM SHOW ON UNITY IN DIVERSITY	ALL	N.S.S.
		STUDY TOUR : NGO AT PUNE	T.Y.	EXTENSION
		WORKSHOP : PREPARATION OF QUESTIONNAIRE & SURVEY	T.Y.	EXTENSION
	16/12/2014	WORKSHOP ON HARDWARE	F.Y.	COMPUTER

	17/12/2014	WORKSHOP ON VEGETABLES AND FRUIT CARVING COMPTN ON BOUQUE USING FRUITS AND VEGETABLES carving		Nutrition
	15 TO 22.12.14	SPECIAL CAMP	F.Y. & S.Y.	N.S.S.

MONTH: JANUARY 2015

Sr. No.	Date	Activity	Class	Department
	03.01.15	SAVITRIBAI PHULE JAYANTI	ALL	N.S.S.
	III WEEK	BAL MELAVA	T.Y.	H.D.
	17.01.15	WORKSHOP ON YOGA TO NSS VOL.	F.Y.& S.Y.	N.S.S.
	09.01.15	VISIT TO APPAREL CARE INDUSTRY	F.Y.	TEXTILE
	18.01.15	WORKSHOP ON USE OF SPREADSHEETS IN EXCEL	F.Y.	COMPUTER
		SAHAKAR MAHARSHI SHANKARRAO MOHITE PATIL BIRTH ANNIVERSARY		
		INTERNSHIP AT INDUSTRY, PRESCHOOL, SHOPPE, BANKS	T.Y.	SCIENCE
	19.01.2015	FIELD VISIT : FOOD INDUSTRY AT PHALTAN		
	20.01.15	SEMINAR : EFFECTIVE COMMUNICATION SKILLS FOR PERSONALITY DEVELOPMENT.	S.Y.	HD
		DEVELOPMENT AND DISTRIBUTION OF NUTRITIONS Activity FOOD TO SCHOOL CHILDREN LECTURE ON HEALTHY FOOD HABITS		FSN

MONTH: FEBRUARY 2015

Sr. No.	Date	Activity	Class	Department
	I WEEK	MEDICINE COLLECTION	F.Y. & S.Y.	N.S.S.
	11.02.15	SAHAKAR MAHARSHI SHANKARRAO MOHITEPATIL DEATH ANNIVERSARY	ALL	CULTURAL
	14.02.15	RATNAI MAHOTSAV	ALL	CULTURAL
	III WEEK	DONATION OF MEDICINE IN RURAL HOSPITAL	F.Y. & S.Y.	N.S.S.
		SEMINAR : CHILDREN FROM DISADVANTAGED COMMUNITY: OUR ROLE	T.Y.	HD
		VISIT TO BALBHAVAN PUNE	T.Y.	HD
	12.02.15	FASHION SHOW ON FABRIC PAINTED GARMENTS	F.Y.& S.Y.	TEXT. SCI.
	III WEEK	WORKSHOP ON WEB PAGE DESIGNING	T.Y.	COMPUTER
	28.02.15	SCIENCE DAY CELEBRATION COMP CUM EXHIBITION : PREPARATION OF SCIENTIFIC EXHIBITS	T.Y. & F.Y.	SCI.

MONTH : MARCH 2015

Sr. No.	Date	Activity	Class	Department
		PARENT EDUCATION PROGRAM	JIJAMATA	HD

			PARENTS	
	III WEEK	WORKSHOP : CONDUCTING LOW COST SCHOOL READINESS ACTIVITIES	ANGANWADI WORKERS	HD
	II WEEK	UNIT TEST		
	IV WEEK	CARRIER IN COMPUTER	T.Y.	COMPUTER
	08.03.15	INTERNATIONAL WOMEN'S DAY EXHIBITION CUM SALE	WOMEN FROM LOCALITY	ALL
	14.03.15	GRAHAK DIN CELEBRATION ART EXHIBITION	ALL	SCIENCE
	IV WEEK	AFTER GRADUATION CAREER ORIENTATION PROGRAM	T.Y.	ALL

MONTH: APRIL 2015

Sr. No.	Date	Activity	Class	Department
01	II WEEK	UNI. EXAM	ALL	EXAM

Achievements :

- Strength of the student in all classes improved due to admission campaigning, counselling and exhibition organized for students and parents.
- Lectures organized on various issues created awareness and enhanced knowledge among students regarding various issues related to women, society, environment, health, career investment etc.
- Student learnt about societal problems and participated in various social work through N.S.S. activities . Students learnt about working in group, leading the group etc.
- Students interacted with their academic peers through various cultural events ,sport events and leadership camp
- Various activities developed self confidence in students through participation, interactions and their achievements.
- Student gained knowledge and skills through skill oriented programmes
- Students gained entrepreneurship skills and market skills through projects, exhibitions and stalls.
- Study tours helped students to aware about surroundings, observe and report writing skills .Students got practical experience.
- Participation and achievements in various competitions developed sport spirit among the students

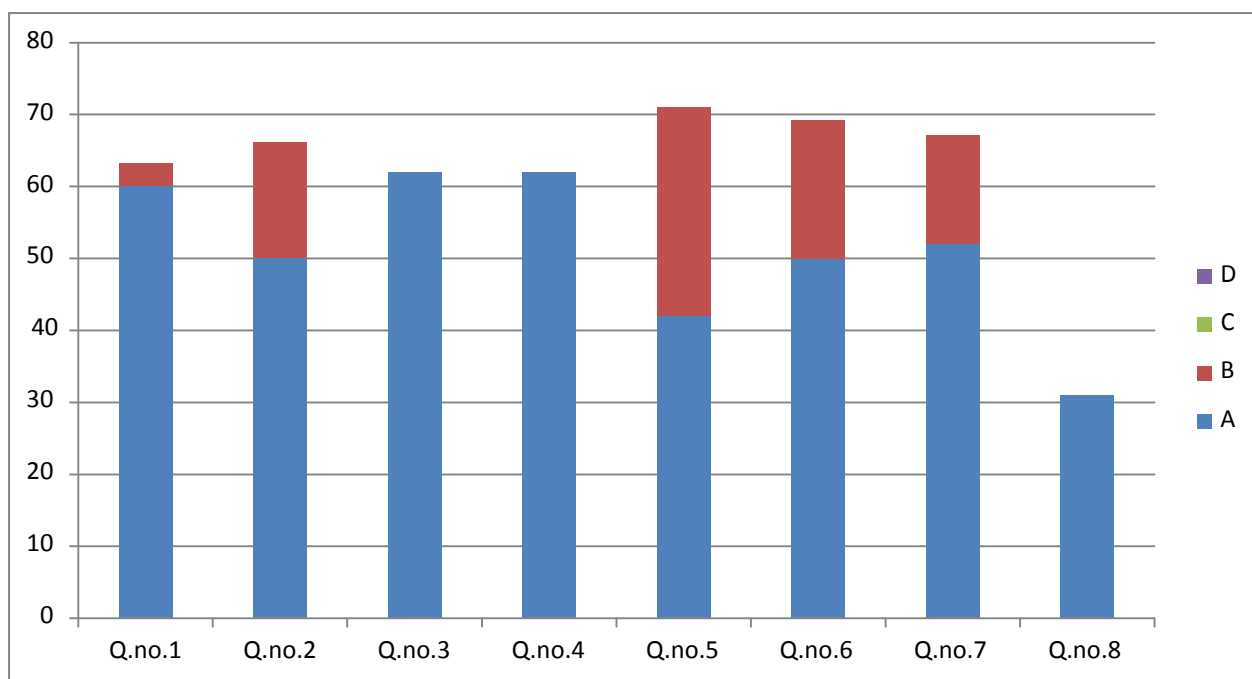
ANALYSIS OF FEEDBACK FROM OF STUDENTS

QUESTIONNAIRE NO. 01

Academic Year :2014-15

CLASS : T.Y.B.Sc.

Que. No.	Total Responses	Answer option							
		A		B		C		D	
		Number	%	Number	%	Number	%	Number	%
01	31	30	60	01	3.22	00	00	00	00
02	31	25	50	05	16.12	00	00	00	00
03	31	31	62	00	00	00	00	00	00
04	31	31	62	00	00	00	00	00	00
05	31	22	42	09	29.03	00	00	00	00
06	31	25	50	06	19.32	00	00	00	00
07	31	26	52	05	15.12	00	00	00	00
08	31	31	62	00	00	00	00	00	00



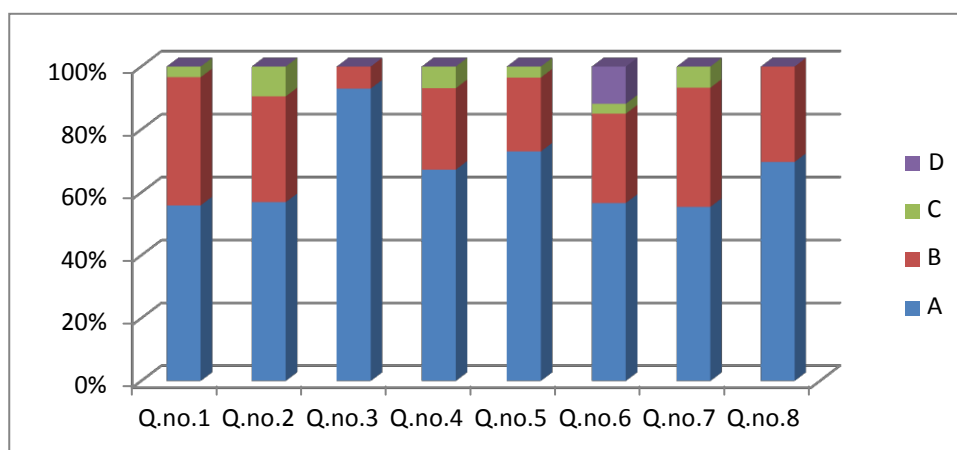
ANALYSIS OF FEEDBACK FROM STUDENTS

QUESTIONNAIRE NO. 01

Academic Year : 2014-15

CLASS : S.Y.B.Sc.

Que. No.	Total Responses	Answer option							
		A		B		C		D	
		Number	%	Number	%	Number	%	Number	%
01	40	22	55	16	40	01	3.33	00	00
02	40	24	60	13	35.4	03	9.99	00	00
03	40	32	80	6	15	00	00	00	00
04	40	26	65	10	25	02	6.66	00	00
05	40	28	70	9	22.5	01	3.33	00	00
06	40	24	60	12	30	01	3.33	05	12.5
07	40	22	55	15	37.5	02	6.66	00	00
08	40	23	57.5	10	25	00	00	00	00



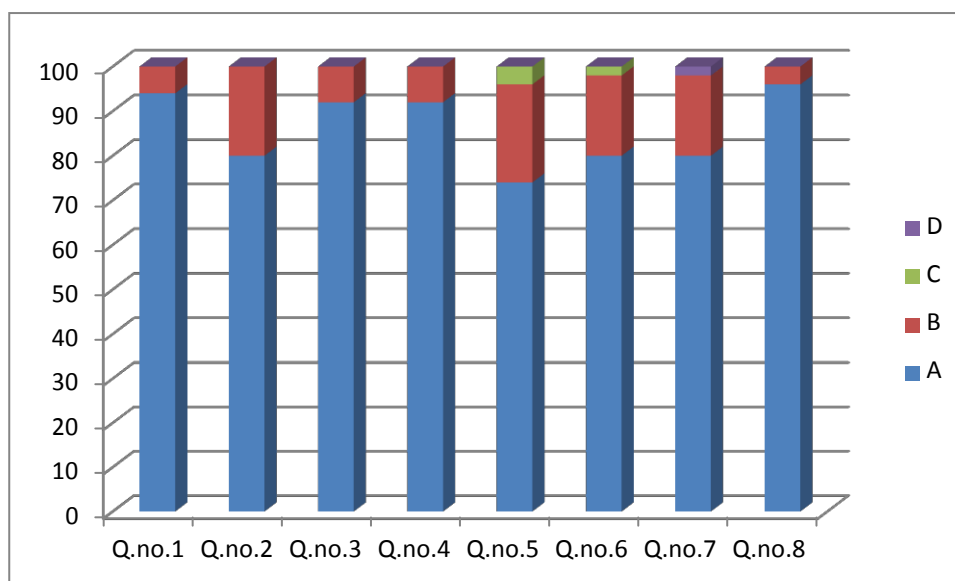
ANALYSIS OF FEEDBACK FROM STUDENTS

QUESTIONNAIRE NO. 01

Academic Year : 2014-15

CLASS : F.Y.B.Sc.

Que. No.	Total Responses	Answer option							
		A		B		C		D	
		Number	%	Number	%	Number	%	Number	%
01	50	47	94	3	6	00	00	00	00
02	50	40	80	10	20	00	00	00	00
03	50	46	92	4	8	00	00	00	00
04	50	46	92	4	8	00	00	00	00
05	50	37	74	11	22	02	04	00	00
06	50	40	80	9	18	00	00	01	02
07	50	40	80	9	18	00	00	01	02
08	50	48	96	2	4	00	00	00	00



ANALYSIS OF FEEDBACK FROM STUDENTS

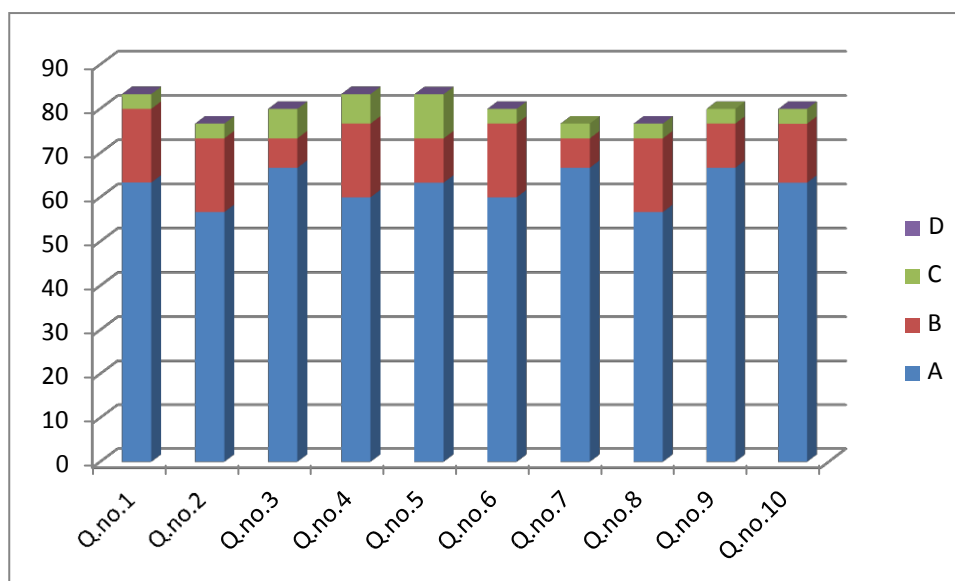
QUESTIONNAIRE NO. 02

Academic Year : 2014-15

CLASS : T.Y.B.Sc.

Name of Teacher : Dr.Surve R.N.

Que. No.	Total Responses	Answer option							
		A		B		C		D	
		Number	%	Number	%	Number	%	Number	%
01	30	19	63.33	5	16.66	1	3.33	00	00
02	30	17	56.66	5	16.66	1	3.33	00	00
03	30	20	66.66	2	6.66	2	6.66	00	00
04	30	18	60	5	16.66	2	6.66	00	00
05	30	19	63.3	3	10	3	10	00	00
06	30	18	60	5	16.66	1	3.33	00	00
07	30	20	66.66	2	6.66	1	3.33	00	00
08	30	17	56.66	5	16.66	1	3.33	00	00
09	30	20	66.66	3	10	1	3.33	00	00
10	30	19	63.3	4	13.33	1	3.33	00	00

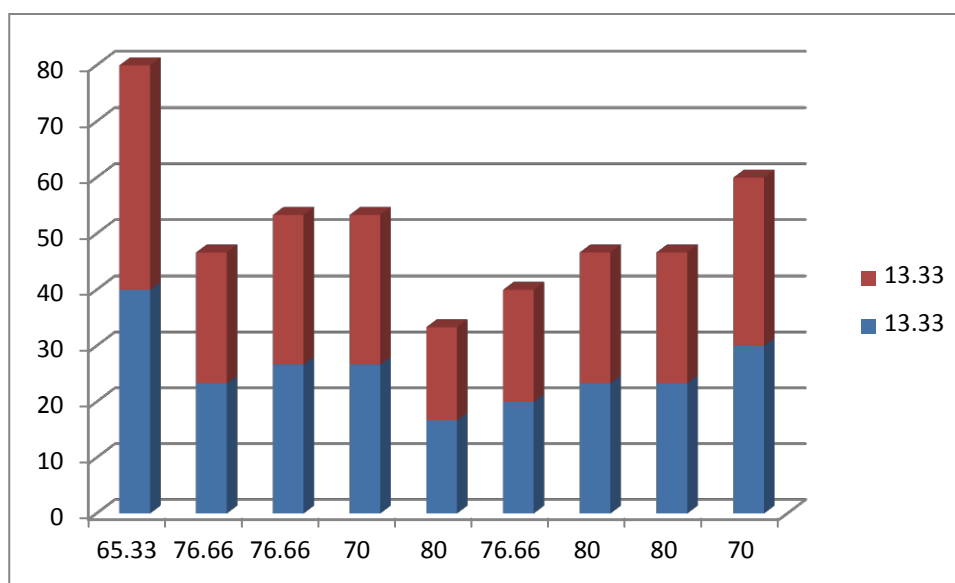


Academic Year : 2014-15

CLASS : T.Y.B.Sc.

Name of Teacher : Dr.Bhosale B.S.

Que. No.	Total Responses	Answer option							
		A		B		C		D	
		Number	%	Number	%	Number	%	Number	%
01	30	24	80	4	13.33	01	3.33	00	00
02	30	19	65.33	12	40	00	00	00	00
03	30	23	76.66	7	23.33	01	3.33	00	00
04	30	23	76.66	8	26.67	00	00	00	00
05	30	21	70	8	26.67	02	6.66	00	00
06	30	24	80	5	16.67	02	6.66	00	00
07	30	23	76.66	6	20	01	3.33	00	00
08	30	24	80	7	23.33	01	3.33	00	00
09	30	24	80	7	23.33	00	00	00	00
10	30	21	70	9	30	1	3.33	00	00

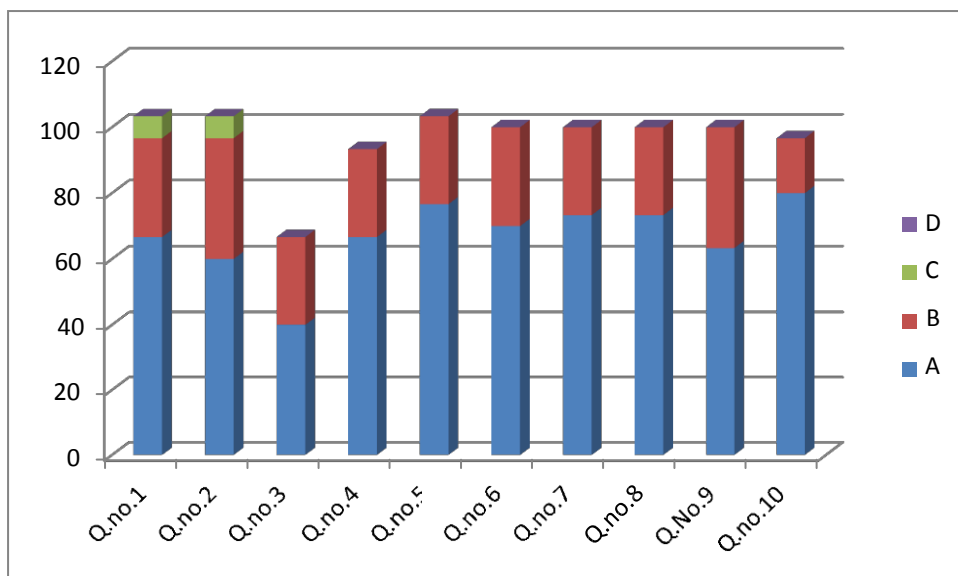


Academic Year : 2014-15

CLASS : T.Y.B.Sc.

Name of Teacher : Dr. Manohar J.B.

Que. No.	Total Responses	Answer option							
		A		B		C		D	
		Number	%	Number	%	Number	%	Number	%
01	30	20	66.67	9	30	02	6.66	00	00
02	30	18	60	11	36.67	02	6.66	00	00
03	30	12	40	8	26.67	00	00	00	00
04	30	20	66.67	8	26.67	00	00	00	00
05	30	23	76.67	8	26.67	00	00	00	00
06	30	21	70	9	30	00	00	00	00
07	30	22	73.33	8	26.67	00	00	00	00
08	30	22	73.33	8	26.67	00	00	00	00
09	30	19	63.33	11	36.67	00	00	00	00
10	30	24	80	5	16.66	00	00	00	00

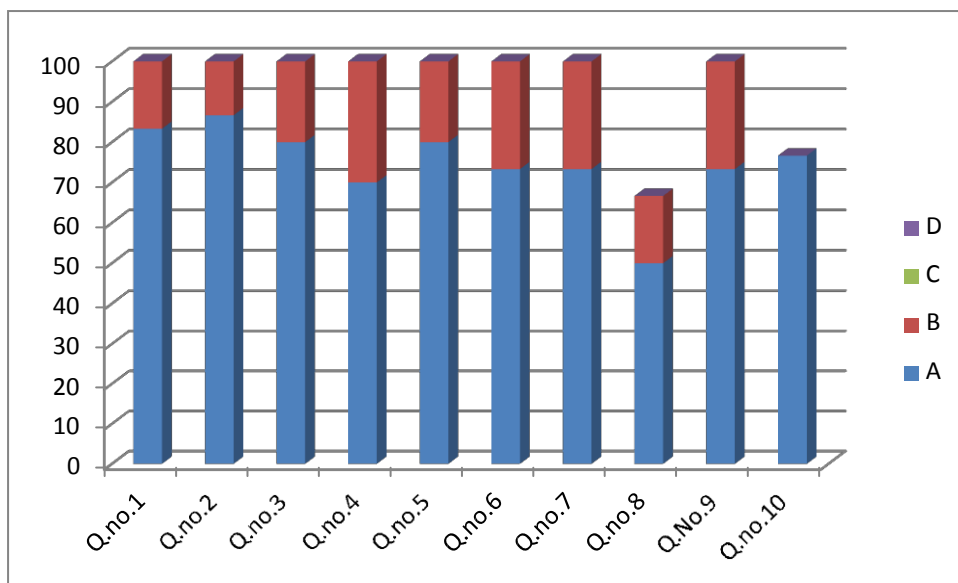


Academic Year :2014-15

CLASS : T.Y.B.Sc.

Name of Teacher : Prof. Bhise C.D.

Que. No.	Total Responses	Answer option							
		A		B		C		D	
		Number	%	Number	%	Number	%	Number	%
01	30	25	83.33	5	16.67	00	00	00	00
02	30	26	86.66	4	13.33	00	00	00	00
03	30	24	80	06	20	00	00	00	00
04	30	21	70	09	30	00	00	00	00
05	30	24	80	06	20	00	00	00	00
06	30	22	73.33	08	26.66	00	00	00	00
07	30	22	73.33	08	26.66	00	00	00	00
08	30	25	50	05	16.67	00	00	00	00
09	30	22	73.33	08	26.66	00	00	00	00
10	30	23	76.66	07	00	00	00	00	00

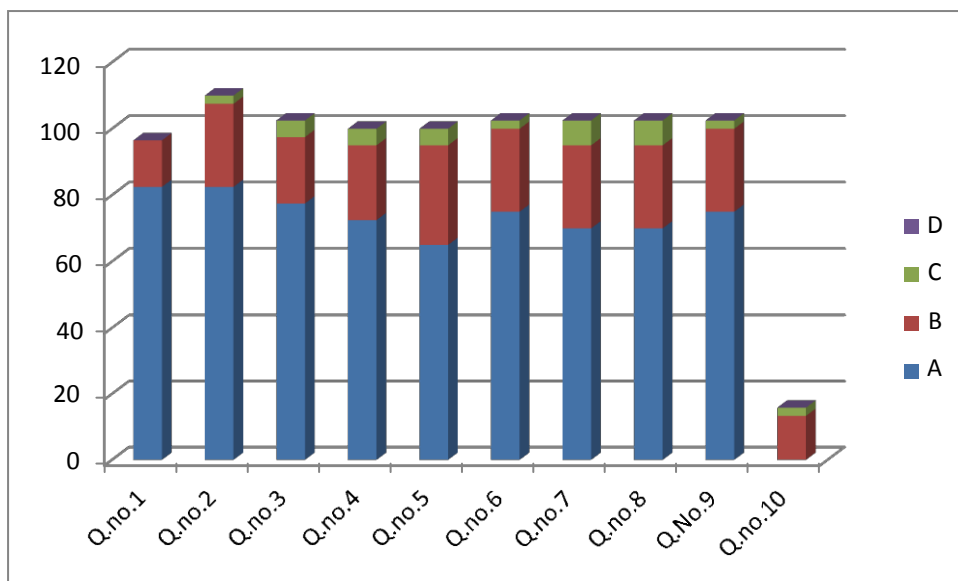


Academic Year :

CLASS : S.Y.B.Sc.

Name of Teacher : Dr. Surve R.N.

Que. No.	Total Responses	Answer option							
		A		B		C		D	
		Number	%	Number	%	Number	%	Number	%
01	40	33	82.5	7	14	00	00	00	00
02	40	28	70	10	25	01	2.5	00	00
03	40	31	77.5	8	20	02	05	00	00
04	40	29	72.5	9	22.5	02	05	00	00
05	40	26	65	12	30	02	05	00	00
06	40	30	75	10	25	01	2.5	00	00
07	40	28	70	10	25	03	7.5	00	00
08	40	28	70	10	25	03	7.5	00	00
09	40	30	75	10	25	01	2.5	00	00
10	40	33	82.5	04	13.33	01	2.5	00	00

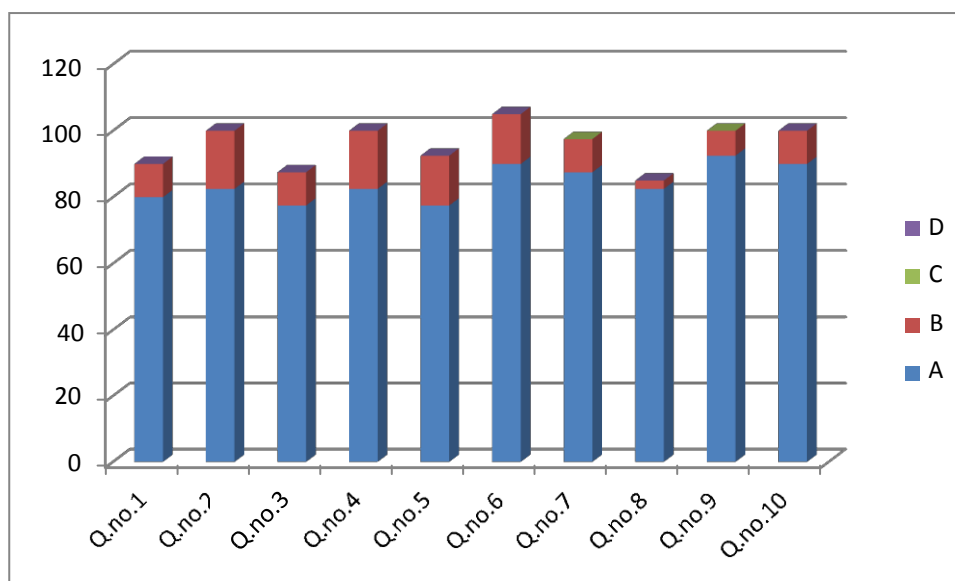


Academic Year :2014-15

CLASS : S.Y.B.Sc.

Name of Teacher : Dr.Bhosale B.S.

Que. No.	Total Responses	Answer option							
		A		B		C		D	
		Number	%	Number	%	Number	%	Number	%
01	40	32	80	04	10	00	00	00	00
02	40	33	82.5	07	17.5	00	00	00	00
03	40	31	77.5	04	10	00	00	00	00
04	40	33	82.5	07	17.5	00	00	00	00
05	40	31	77.5	06	15	00	00	00	00
06	40	36	90	06	15	00	00	00	00
07	40	35	87.5	04	10	00	00	00	00
08	40	38	82.5	02	2.5	00	00	00	00
09	40	37	92.5	03	7.5	00	00	00	00
10	40	36	90	04	10	00	00	00	00

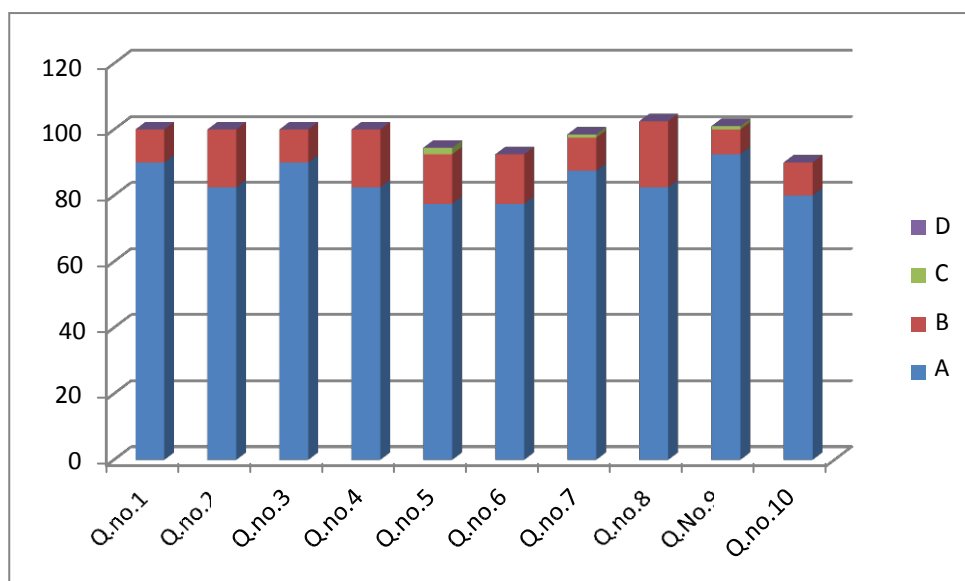


Academic Year :2014-15

CLASS : S.Y.B.Sc.

Name of Teacher : Prof.Ghadge A.B.

Que. No.	Total Responses	Answer option							
		A		B		C		D	
		Number	%	Number	%	Number	%	Number	%
01	40	36	90	04	10	00	00	00	00
02	40	33	82.5	07	17.5	00	00	00	00
03	40	36	90	04	10	00	00	00	00
04	40	33	82.5	07	17.5	00	00	00	00
05	40	31	77.5	06	15	00	02	05	00
06	40	31	77.5	06	15	00	00	00	00
07	40	35	87.5	04	10	00	01	2.5	00
08	40	33	82.5	08	20	00	00	00	00
09	40	37	92.5	03	7.5	00	01	2.5	00
10	40	32	80	04	10	00	00	00	00

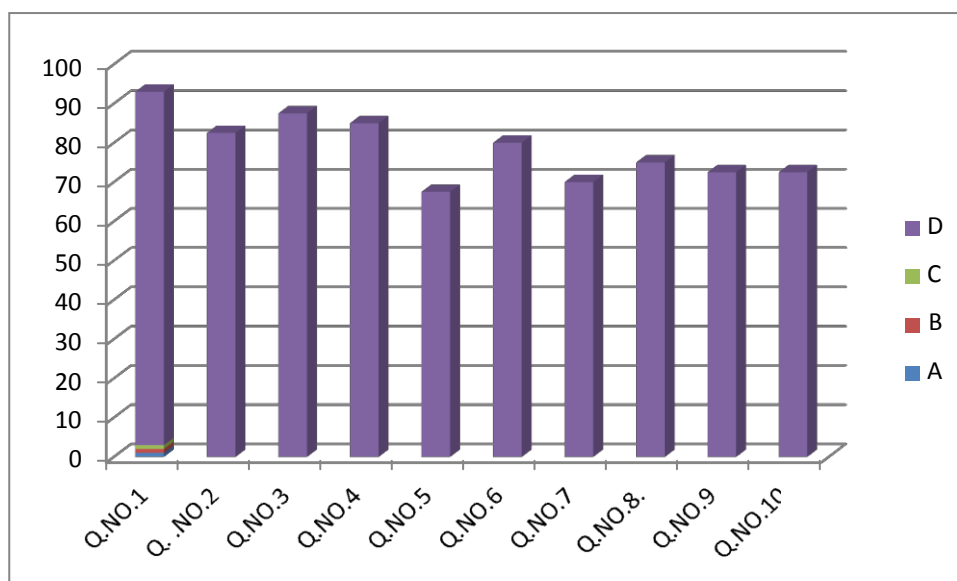


Academic Year : 2014-15

CLASS : S.Y.B.Sc.

Name of Teacher : Dr.Manohar J.B.

Que. No.	Total Responses	Answer option							
		A		B		C		D	
		Number	%	Number	%	Number	%	Number	%
01	40	36	90	04	10	00	00	00	00
02	40	32	80	08	20	01	2.5	00	00
03	40	37	92.5	04	10	01	2.5	00	00
04	40	38	95	02	05	02	05	00	00
05	40	28	70	14	35	01	2.5	00	00
06	40	33	82.5	06	15	02	05	00	00
07	40	35	87.5	06	15	01	2.5	00	00
08	40	33	82.5	06	15	01	2.5	00	00
09	40	29	72.5	10	25	02	05	00	00
10	40	35	87.5	02	05	01	2.5	00	00

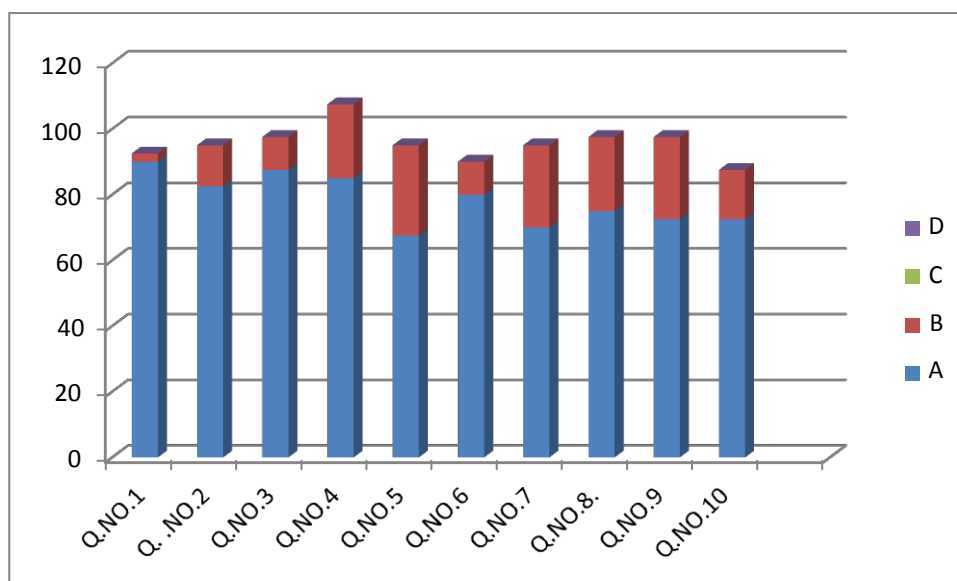


Academic Year : 2014-15

CLASS : S.Y.B.Sc.

Name of Teacher : prof.Bhise C.D.

Que. No.	Total Responses	Answer option							
		A		B		C		D	
		Number	%	Number	%	Number	%	Number	%
01	40	36	90	1	2.5	00	00	00	00
02	40	33	82.5	5	12.5	00	00	00	00
03	40	35	87.5	4	10	00	00	00	00
04	40	34	85	9	22.5	00	00	00	00
05	40	27	67.5	11	27.5	00	00	00	00
06	40	32	80	4	10	01	2.5	00	00
07	40	28	70	10	25	01	2.5	00	00
08	40	30	75	9	22.5	00	00	00	00
09	40	29	72.5	10	25	00	00	00	00
10	40	29	72.5	6	15	00	00	00	00

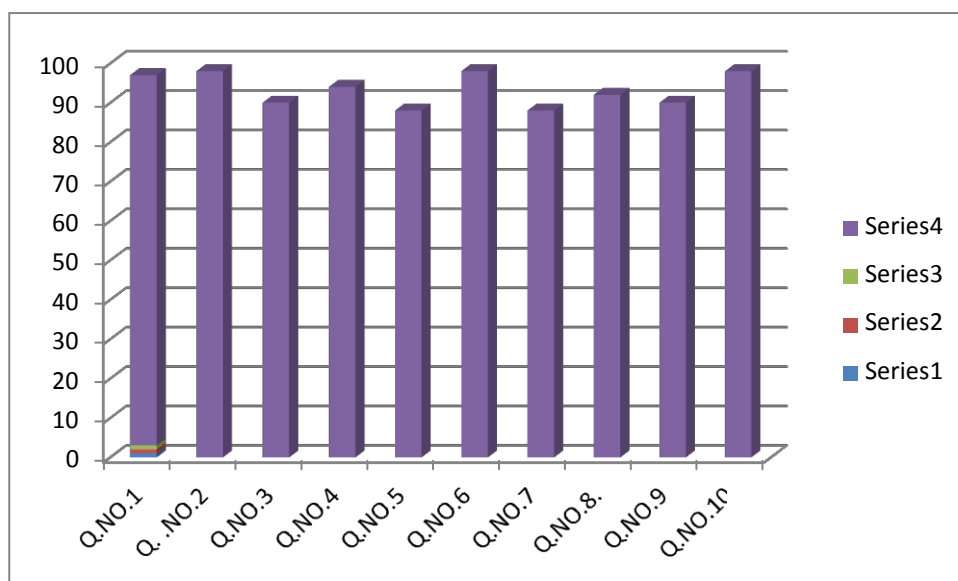


Academic Year : 2014-15

CLASS : S.Y.B.Sc.

Name of Teacher : Prof.Nimbhorkar R.R.

Que. No.	Total Responses	Answer option							
		A		B		C		D	
		Number	%	Number	%	Number	%	Number	%
01	40	25	62.5	15	37.5	01	2.5	00	00
02	40	18	45	17	42.5	04	10	01	2.5
03	40	23	57.5	10	25	02	05	01	2.5
04	40	25	62.5	12	30	02	05	00	00
05	40	29	72.5	08	20	01	2.5	00	00
06	40	24	60	12	30	04	10	01	2.5
07	40	28	70	09	22.5	02	05	01	2.5
08	40	29	72.5	10	25	02	05	00	00
09	40	27	67.5	09	22.5	00	00	00	00
10	40	26	65	09	22.5	01	2.5	01	2.5

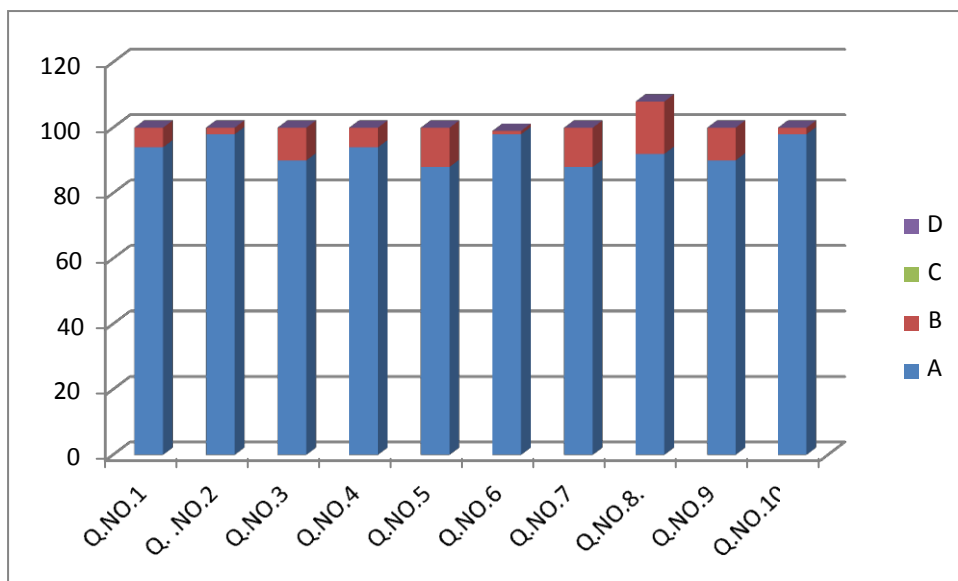


Academic Year : 2014-15

CLASS : F.Y.B.Sc.

Name of Teacher : Dr.Bhosale B.S.

Que. No.	Total Responses	Answer option							
		A		B		C		D	
		Number	%	Number	%	Number	%	Number	%
01	50	49	98	02	04	00	00	00	00
02	50	49	98	03	06	00	00	00	00
03	50	44	88	07	14	00	00	00	00
04	50	44	88	07	14	00	00	00	00
05	50	46	92	06	12	00	00	00	00
06	50	41	82	10	02	00	00	00	00
07	50	44	88	07	14	00	00	00	00
08	50	43	86	07	14	00	00	00	00
09	50	49	98	03	06	00	00	00	00
10	50	47	44	02	04	00	00	00	00

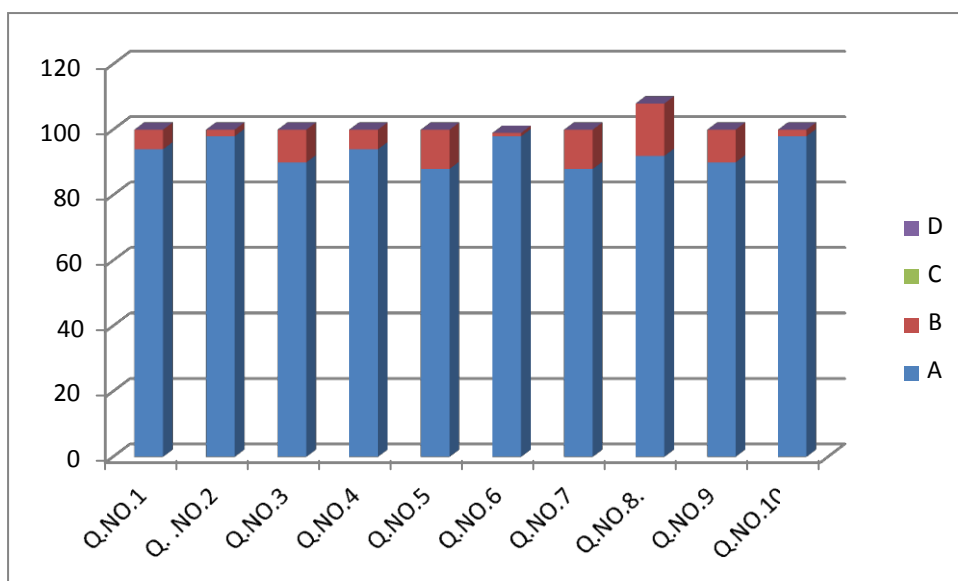


Academic Year :2014-15

CLASS :F.Y.B.Sc.

Name of Teacher : Prof. Ghadge A.B.

Que. No.	Total Responses	Answer option							
		A		B		C		D	
		Number	%	Number	%	Number	%	Number	%
01	50	48	96	02	4	00	00	00	00
02	50	44	88	02	4	00	00	00	00
03	50	44	88	03	6	00	00	00	00
04	50	48	96	02	4	00	00	00	00
05	50	45	90	04	8	00	00	00	00
06	50	48	96	00	00	01	02	00	00
07	50	47	94	02	4	00	00	00	00
08	50	48	96	02	4	00	00	00	00
09	50	47	94	01	2	00	00	00	00
10	50	46	92	02	4	00	00	00	00

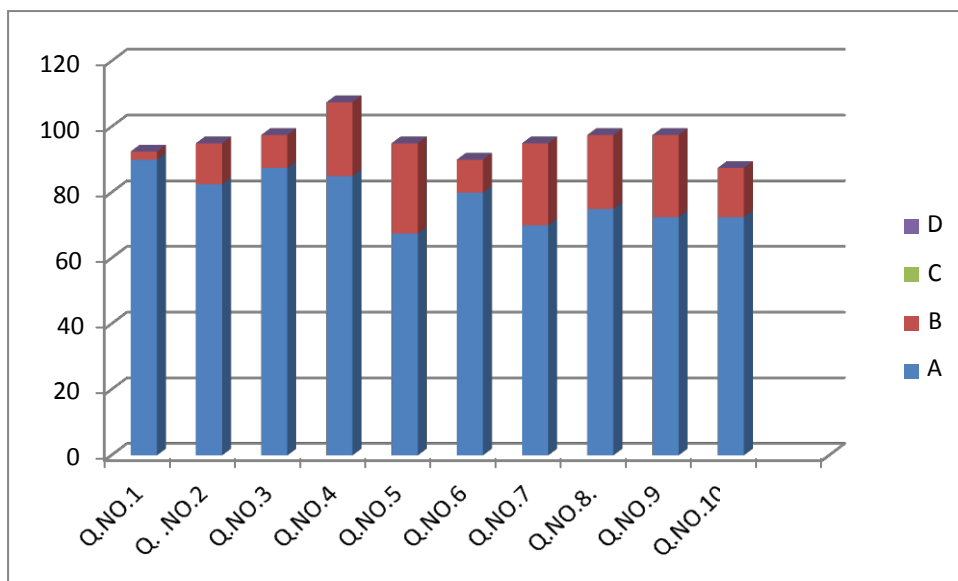


Academic Year : 2014-15

CLASS : F.Y.B.Sc.

Name of Teacher : Dr. Manohar J.B.

Que. No.	Total Responses	Answer option							
		A		B		C		D	
		Number	%	Number	%	Number	%	Number	%
01	50	47	94	03	06	00	00	00	00
02	50	49	98	01	02	00	00	00	00
03	50	45	90	05	10	00	00	00	00
04	50	47	94	03	06	00	00	00	00
05	50	44	88	06	12	00	00	00	00
06	50	49	98	01	01	00	00	00	00
07	50	44	88	06	12	00	00	00	00
08	50	46	92	04	16	00	00	00	00
09	50	45	90	05	10	00	00	00	00
10	50	49	98	01	02	00	00	00	00

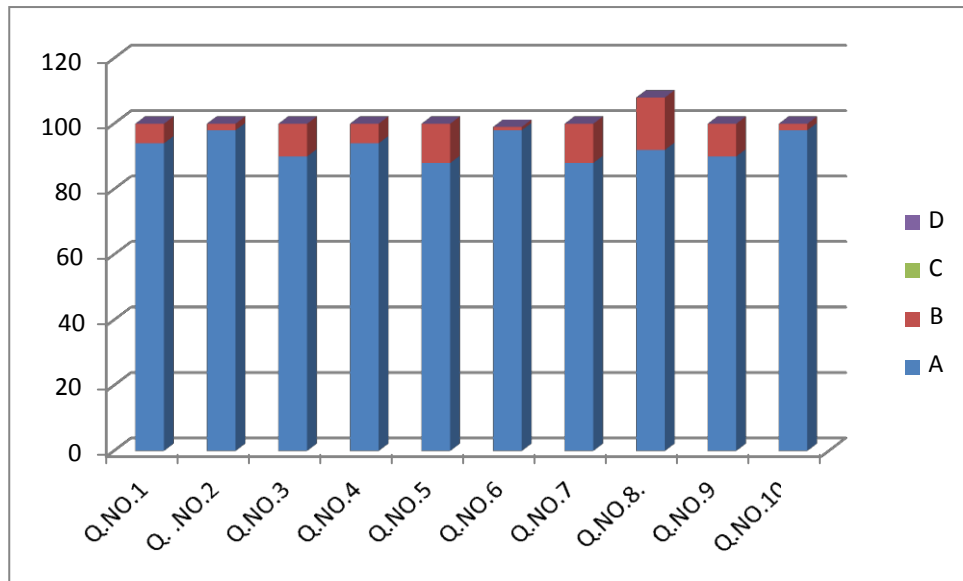


Academic Year :2014-15

CLASS :F.Y.B.Sc.

Name of Teacher : Prof. Nimbhorkar

Que. No.	Total Responses	Answer option							
		A		B		C		D	
		Number	%	Number	%	Number	%	Number	%
01	50	40	80	6	00	00	00	00	
02	50	39	78	7	00	00	00	00	
03	50	38	76	7	00	00	00	00	
04	50	41	82	3	00	00	00	00	
05	50	42	84	5	00	02	04	00	
06	50	38	76	5	00	02	04	00	
07	50	37	74	6	00	02	04	00	
08	50	42	84	1	00	00	00	00	
09	50	39	78	2	00	00	00	00	
10	50	41	82	1	00	00	00	00	



Action Taken Report “Tewo

Sada Dnyanmay Pradeep”

Shikshan Prasarak Mandals’

Shrimati Ratnaprabhadevi Mohite Patil College of Home Science for Women, Akluj

Department of Food Science and Nutrition

Departmental activities

Academic Year: 2014-2015

Sr.No	Activity	Month/Date	Topic	Remark
1.	Orientation	8 th July 2014	Food Science & Nutrition Career opportunities	First year students
2.	Breastfeeding promotion week <ul style="list-style-type: none"> • Competitions Digital Poster making • Workshop for pregnant & lactating woman Lecture Demonstration Exhibition 	1 st -7 th Aug 2014 7 th Aug 2014 8 th Aug 2014	- Importance of Breastfeeding Diet for pregnant & lactating woman Supplementary foods Posters & charts	College level Visit to Anganwadi Raut Nagar Akluj
3.	Nutrition week <ul style="list-style-type: none"> • Competitions • Recipe 	1 st -7 th Sept 2014 9 th Sept 2014	Maharashtrian recipes	College level

	<ul style="list-style-type: none"> • Workshop for college students Lecture • Departmental visit to laboratory Lecture and Guidance Exhibition 	9 th Sept 2014	<p>Diet for adolescent girls</p> <p>Departmental subject</p> <p>career opportunities</p> <p>Recipes Posters and Charts</p>	<p>Visit of students of 11th and 12th Sadashivrao Mane Vidyalaya Akluj to College</p>
4.	Canteen	Nov-Dec 2014	Entrepreneurship Management	In college premises
5.	Food Stall & Exhibition	19 th & 20 th Dec 2014	<p>In college premises</p> <p>Selling of Recipes Posters , charts and one day diet</p>	Visit of Junior college students to department and Laboratory
6.	Lecture	24 th Dec 2014	Dietary guidance to Parents and Anganwadi workers	N.S.S. Special Camp at Z. P School Malewadi
7.	Distribution of Nutritious recipe	6 th Feb 2015	Mix Dal wada Prepared and distributed nutritious recipe under Internship	Children of Sugarcane workers at Yashwant nagar
8.	Workshop	9 th Feb 2015	Vegetable and	All students of

	<ul style="list-style-type: none"> •Lecture •Demonstration 		fruit carving PPT Video Demo and participation	college
9.	Competition on Vegetable and fruit carving	21 st Feb 2015	Vegetable and fruit Bouquet	All students of college
10	Visit to food industry Observation	7 th March 2015	Food preservation Food processing Packaging Preserved products	Mapro company and Malas fruit processing company

“Tewo Sada Dnyanmay Pradeep”

Shikshan Prasarak Mandals’

Shrimati Ratnaprabhadevi Mohite Patil College of Home Science for Women, Akluj

Department of Food Science and Nutrition

Departmental staff participation in other activities

Academic Year: 2014-2015

Sr.No	Activity	Month/Date	Topic	Remark
1.	Lecture	19 th July 2014	Diet for Adolescent girls	First Year students of B.A. and B.com Shankarrao Mohite Mahavidyalaya Akluj
2.	Lecture	6 th Aug 2014	Diet of women during Lactation period	Tanishka and Savvi Foundation organized programme at Sub District Hospital

				Akluj
3.	Lecture	7 th Aug 2014	Economic empowerment of women	9 th std students of Laxmibai Kanya Prashala
4.	Street play	2 nd Feb 2015	Save Girl Child Environment protection Drug abuse	N.S.S. Special Camp IIT Khandali at Pisewadi
5.	Judging of Daughters Mom club recipe competition	6 th March 2015	Veg and sweet recipes	Daughters Mom club Akluj
6.	Judging of Recipe competition	27 th Feb 2015	Veg and sweet recipes	SRMP B.ED Women's college Akluj

Smt. Ratnaprabhadevi Mohite-Patil College of Home Science for Women, Akluj

Human Development-Activities

Academic Year: 2014-15

Sr. No	Activity	Month/Date	Topic	No. of Participant	Remark
1	Orientation	07.07.14	Introduction to F.Y.	55 F.Y. students	Information about departmental staff, activities, scope etc.
2	Guiding speech	19.07.14	Health care during adolescence	B.A. & B.Com. Students of S.M. College Malewadi	Prof. Chhaya Bhise PPT presentation
3	Workshop	22.07.14	Preventive measures for protecting children from accidents	T.Y.(opt) students	Prof. Bhise C.D.
4	NSS :Guiding Speech	31.07.14	Reproductive health care during adolescence	S.Y. & F.Y. Students	Prof. Chhaya Bhise PPT presentation
5	Visit & Observations		Observations of the children	10 T.Y. optional group	S.M. Pre-primary section
6	Workshop	07.08.14	Premarital counseling	S.Y. Students	Prof. Bhise C.D. :Preparing students for marriage
7	Workshop for Preschool/ Anganwadi teachers	11&12 .08.14	1.Preparing children for school- reading readiness, writing readiness & mathematical readiness 2.Developmental milestones 3.Integrated curriculum 4.Behavioral issues in children 5.Play way methodology	150 Preschool /AWW/supervisors / Preprimary Section heads of SP Mandal schools	Dr. Reeta Sonawat, Dr. Chandrashekhar Gawali ,Ms. Sudha Srikant Ms. Ruchita Nisar and group
8	Teenage education	23.08.14	Kishorvayatil	150 girl students from std VII	Luxmibai Kanya Prashala Yashwant Nagar

	Program		SparshDnyan	&VIII	Interactive PPT presentation
9	Workshop	29.08.14	Preventive measures for preventing children from accidents	10 optional T.Y. students	PPT interactive ,demo
10	Guiding speech	05.09.14	Teacher's Day	About 500 students	Prof. Bhise C.D. guided to primary school children & teachers in S.M.Primary school,Akluj
10	Workshop	14.&15 .09.14	Topic: Conducting English rhymes and songs in preprimary cshool classroom	75 SPM oreschool teachers	PPT presentation, demonstration, group activities
11	Visit	01.08.14;01.09.14;19.09.14;22.09.14;	Seeing different types of preschool setups	10 opt. t.y. stu	SMP. E.S. Dhavalnagar Play fun School Ganesh Nagar Rajas kids cap etc
12	Skit presentation	16&17.09.14	Understanding growing up	58 F.Y. student	Group wise Skit's presentation
13	Comp : Debate	18.09.14	Topic : Conflict between Adolescence children and parent	F.Y. 58 students	
14	Skill development program	First Term	1.Manners & Etiquettes 2.Language Dev. 3.Time Management 4.Good Habits	F.Y. B.Sc Students : around 55 students	Group activities and interactive sessiond
15	Comp: Essay	18.12.14	Social insecurity: Obstacle in women dev.	14 students from all classes	Results : 3
16	Comp: Speech	18.12.14	Status of women	12 students from all classes	Results :
17	Comp: Poster making	26.12.14	Empowered Women	18 students from all classes	Posters are presented to rural women from Malewadi

18	Exhibition	19&20.12.14	Department at glance :	About 500 students ,parents and teachers	Admission Campaign
19	Parent education program	20.12.14	Child development	Near about 100 Parents & teachers visited	Exhibition cum model presentations by students of T.Y. (opt)
20	Khel-Shala Divas	26.12.14	Stories, games, creative activities and games	150 children And 10 Department student T.Y.B.Sc.	Z.P. primary school children from I,II &III Std.
21	Balmelawa	12 to 17.01.2015	Ghar-sansar & Seasons	T.Y. (opt) students and 40 children in the age group of 3-6 yrs.	Students from preprimary section of S.M.V. School .
22	Seminar	19.01.15	Effective communication skills	S.Y. students	Prof. Bhise C.D.: Group & individual activities
23	Seminar	03.02.15	Children from disadvantaged community : our role	T.Y.(opt)	Prof. Bhise C.D.: PPT presentation
24	Workshop	12.03.15	Conducting low cost school readiness activities	T.Y. (opt)	Prof. Bhise C.D. : PPT presentation & demo.
25	Admission Campaign	II Term	Information about college and course	Std. 12 th students of various jr. colleges in & around the town	Speeches, interaction with students, PPT presentations given to the students.

“Tewo Sada Dnyanmay Pradeep”
Shikshan Prasarak Mandals’
Shrimati Ratnaprabhadevi Mohite Patil College of Home Science for Women, Akluj

Department of Library
Departmental activities
Academic Year: 2014-2015

Sr.No	Activity	Month/Date	Topic	Remark
1.	Orientation	8 th July 2014	Library	First year students
2.	Exhibition	19-20 Dec.2014	Various books in Library	Higher Secondary Students

**Shrimati Ratnaprabhadevi Mohite Patil College of Home
Science for Women, Akluj. Department of**

Textile Science and Apparel Design Academic Year

2014-2015

Activities Carried Out

Sr. No.	Activities	Date	Class
01.	Orientation to Textile& Clothing	08/07/2014	F.Y. B.Sc.
02.	Workshop on Eco friendly Garment using Natural dye (Flowers of Gulmohar)	11/07/2014	S.Y. B.Sc.
03.	Presentation on various Accessories of Cloth as well as Home	21/07/2014	F.Y. B. Sc.
04.	Ppt Presentation of various textures in Handmade purses	08/08/2014	S. Y.B. Sc.
05.	Fabric Painting Competition	13/09/2014	F.Y., S.Y. & T.Y.
06.	Workshop on Collage and Paper Jewelry	20/09/2014	F.Y. & S.Y.
07.	Demonstration of Flower arrangement	29/09/2014	F.Y.
08.	Exhibition	19-20 Dec. 2015	All Class
09.	Hand Embroidery Training	27/12/2015	NSS Camp
10.	Visit to Garment Care unit	03/03/2015	F.Y. B.Sc.

**Shrimati Ratnaprabhadevi Mohite Patil College of Home Science for Women,
Akluj**

Sports Department

Activities Carried Out in the Academic Year 2014-2015

Sr. No.	Event	Month/Date	No. of Participants	Level	Remark
1.	Yogasan	August 2014	06	Inter collegiate	Participation
2.	Kho-Kho	September 2014	12	Inter collegiate	IV Place One student is selected for west zone inter university
3.	Kabaddi	September 2014	12	Inter collegiate	One student is selected for university coaching camp
4.	Tug-of-war	September 2014	09	Inter collegiate	Participation
5.	Athletics	October 2014	09	Inter collegiate	General Championship and five students were selected and participated for Maharashtra State inter university
6.	S.P.M. Sport Championship Kho-Kho, Kabaddi, Tug – of –war, Chess and athletics etc.	January 2015	35	Inter Institution	General Championship
7.	Overall Sport events of University	July 2015	02	University	Best sport student of the university First and Second

**SHRIMATI RATNAPRABHADEVI MOHITE PATIL COLLEGE OF HOME
SCIENCE FOR WOMEN, AKLUJ**

National Service Scheme Department

Academic Year 2014-2015

Regular Activity Report

Sr.No.	Activities	Date	Class	Conducted By
01.	Enrollment of NSS Volunteers	17/07/2014	F.Y. & S.Y.	
02.	Orientation to NSS	19/7/2014	F.Y. & S.Y.	Prof. Kore K.K.
03.	Essay Competition	28/07/2014	F.Y. & S.Y.	
04.	Seminar on Self Care Education	31/07/2014	F.Y. & S.Y.	Prof. Bhise C.D.
05.	Guest Lecture on Personal Hygiene	09/08/2014	F.Y.,S.Y. & T.Y.	Dr. Shinde
06.	Cleanliness of Play Ground	12/08/2014	F.Y. & S.Y.	
07.	Short film Presentation on Water Conservation	13/08/2014	F. Y. & S.Y.	Prof. Nimbhorkar R.R.
08.	Poster Making Competition	14/08/2014	F.Y. & S.Y.	
09.	Group Discussion on problems faced by women	23/08/2014	F.Y. &S.Y.	
10.	Health Check-up Camp	25/09/2014	F.Y. & S.Y.	

11.	Temple waste management	30/08/2014	S.Y.	
12.	Training for Pre-primary teachers	02/09/2014	Pre-primary teachers of Schools	Prof. Bhise C.D.
13.	Teacher's Day Celebration	05/09/2014	F.Y.,S.Y.& T.Y.	
14.	Slogan Making Competition	06/09/2014	F.Y. & S.Y.	
15.	Cleanliness of College campus	08/09/2014	F.Y. & S.Y.	
16.	Presentation on Literacy & related Issues	13/09/2014	F.Y. & S.Y.	Prof. Nimbhorkar R.R.
17.	Workshop on Jewelry from waste material for N.S.S. volunteers	20/09/2014	F.Y. & S.Y.	Prof. Nimbhorkar R.R.
18.	Skill development Workshop for Higher Secondary Students	26/09/2014	Students of Maharshi Prashala, Akluj.	Prof. Nimbhorkar R.R.
19.	Cleanliness of college campus	27/09/2014	F.Y. & S.Y.	
20.	Mahatma Gandhi Jayanti Celebration	02/10/2014	All Students	
21.	Shramdan	02/10/2014	NSS Volunteers	
22.	Lecture on Waste management	14/10/2014	F.Y. & S.Y.	Dr.Bhosale B.S.
23.	Guest lecture on Health related issues	04/12/2014	All students	Mr. Bharat Gaiwad

24.	Guest Lecture on Safety of Females	18/12/2014	All Students	Mr. Salunkhe Vishwasrao
25.	Youth Day Celebration	12/01/2015	All Students	
26.	Cleanliness of Play Ground	23/01/2015	NSS Volunteers	
27.	Presentation of Street plays	02/02/2015	NSS Volunteers	NSS Camp of ITI, Khandali in Pisewadi
28.	Guest lecture on Mis-concepts about Snakes	05/02/2015	All Students	Mr. Deshmukh Dhananjay
29.	Women's Day Celebration	09/03/2015	All Students	

***Smt.Ratnaprabhadevi Mohite-Patil College of Home Science
for women, Akluj***

Academic year 2014-15

Culture Department

Date	Theme
28.06.14	Death Anniversary of Smt. Ratnaprabhadevi Mohite Patil
25.07.14	Birthday Anniversary of Smt. Ratnaprabhadevi Mohite Patil
25.07.14	Wel come (Fresher's Party)
23.08.14	Youth Festival
05.09.14	Teacher Day
12.01.15	Birthday Anniversary of Rajmata Jijau
14.01.15	Birthday Anniversary of Maharshi Shankarrao Mohite-Patil
11.02.15	Death Anniversary of Maharshi Shankarrao Mohite-Patil
08.03.15	Woman's- Day

SHIKSHAN PRASARK MANDAL'S
SMT. RATNAPRABHADEVI MOHITE-PATIL COLLEGE OF HOME SCIENCE FOR WOMEN, AKLUJ,
TAL.MALSHIRAS, DIST: SOLAPUR
ACADEMIC CALENDAR: 2015-2016

DAYS	JUNE	JULY	AUGUST	SEPTEMBER	OCTOBER	NOVEMBER	DECEMBER	JANUARY	FEBRUARY	MARCH	APRIL	MAY	DAYS
SUN						1							SUN
MON	1 ADMISSION PROCESS					2			1NSS: Medicine Collection	1			MON
TUE	2			1		3	1Comp: Poster making on AIDS : NSS		2	2			TUE
WED	3	1		2 NUTRITION WEEK: RECPIE COMP;VISIT		4	2		3	3			WED
THU	4	2 Tree plantatio n: NSS		3 Clay Modeling: FSN Workshop on Bakery products : FSN	1	5	3 Study tour : EXTENSION		4	4			THU
FRI	5	3		4	2 GANDHI JAYANTI	6	4 Workshop : EXT EDU	1	5	5	1		FRI
SAT	6	4 Presentio n. on Varius Styles of Fabric Ornament ation: TEXTILE	1 Breast Feeding Promotion Week: FSN Collaborativ e Activities with dept Of SCIENCE	5 TEACHER'S DAY :CULTURAL Innovative Recipe Comp: FSN Elocution Comp: NSS	3	7	5 Film Show on Unity in Diversity: NSS	2	6 Workshop on self defense : NSS	6 Presention. On various trends in Accessories: TEXTILE	2		SAT

DAYS	JUNE	JULY	AUGUST	SEPTEMBER	OCTOBER	NOVEMBER	DECEMBER	JANUARY	FEBRUARY	MARCH	APRIL	MAY	DAYS
SUN	7	5	2	6	4	8	6	3 SAVITRIBAI PHULE JAYANTI	7	7	3	1	SUN
MON	8	6	3.	7 Hb estimation camp : SCIENCE Demo: Creating Awareness Through First Aid : NSS Seminar : Career Choice in Adol.(F.Y.):HD	5 Workshop : Fabric Painting : TEXTILE Comp : Quiz : SCIENCE	9	7 Workshop : Soft Skill Dev. : SCIENCE	4 SAVITRIBAI PHULE JAYANTI Celebrations	8	8 INTERNATIONAL WOMEN'S DAY: EXHIBITION CUM SALE	4 IQAC, SWOC, Adm ission, Academic calendar, Exam ,prospectus comm. Meeting	2	MON
TUE	9	7 Orientati on to F.Y.	4Comp: FSN	8 Training : Hand Embroidery to self help group : TEXTILE	6 Visits: SCIENCE Guest Lecture on health related issues: NSS	10	8	5	9 Seminar on Waste Mgt.: NSS	9	5 Staff Sec.& Staff Aca; UGC proposal & circular, Uni . Affiliation, BC Cell, Student Council, Comp. exam meeting	3	TUE
WED	10 Staff Meeting	8 Orientati on to F.Y .	5	9 Group Discussion & Pres. on Literacy :NSS:	7	11	9	6 Guest Lecture : Personal Care/Yoga: SCIENCE	10 SPORTS: INTERCLASS COMP	10	6 Publicity, Research, Anti Ragging, College Mag; Parent – alu. Asso; Teaching aid comm.	4	WED

DAYS	JUNE	JULY	AUGUST	SEPTEMBER	OCTOBER	NOVEMBER	DECEMBER	JANUARY	FEBRUARY	MARCH	APRIL	MAY	DAYS
											meeting		
THU	11	9	6 Workshop : For Pregnant & Lactating Mothers: FSN	10	8	12	10	7	11 SAHAKAR MAHARSHI SHANKARRAO MOHITE PATIL DEATH ANNI.	11	7 Term End Exam: EXAM Discipline,campus maint; ladies room, planning, Health center, Feed back comm. meeting	5	THU
FRI	12	10	7 Presention. On various trends in women apparel: TEXTILE	11	9	13	11 Visit : Garment care Unit :TEXTILE	8	12 TEXTILE Sci.: FASHION SHOW	12 Presention. On various fabric textures : TEXTILE	8 Computer edu; Remedial coaching, Stock main; Library adv; YCMOU, Gymkhana & sports Comm. meeting	6	FRI
SAT	13	11 World Population day Poster Comp.:	8	12	10	14	12	9	13	13	9 Counseling cell, Sexual harr; Cultural, NSS;Hostel, Grivance	7	SAT

DAYS	JUNE	JULY	AUGUST	SEPTEMBER	OCTOBER	NOVEMBER	DECEMBER	JANUARY	FEBRUARY	MARCH	APRIL	MAY	DAYS
		SCIENCE Essay Comp : NSS									redressal , Home Sci. Asso. Comm.. meeting.		
SUN	14	12	9	13	11	15	13	10	14	14	10	8	SUN
MON	15 COMMENCEMENT OF SEM I,III &V IQAC, SWOC Admission, Academic calendar,Exam ,prospectus comm. Meeting	13 Guest Lect: Imp. of Sports : SPORTS	10 Medicine Collection :SCIENCE	14	12 Term End Exams: EXAM	16	14	11 BALMELAWA & exhibition :HD	15 RATNAI MAHOTSAV	15 GRAHAK DIN CELE. :ART EXHIBITION	11	9	MON
TUE	16 Staff Sec.& Staff Aca; UGC proposal & circular,Uni. Affiliation, BC Cell,Student Council, Comp. exam meeting	14	11 Workshop : Premarital preparation (s.y.):HD	15 Guest Lecture on Stress MGT : NSS	13	17	15 NSS:SPECIAL CAMP	12 Birth Anni. Of Rajmata Jijau/Youvak Din : CULTURAL/NS S	16	16 Guest Lecture : Need of Guidance & Counseling in schools (T.Y.): HD	12	10	TUE
WED	17 Publicity, Research, Anti Ragging,College Mag; Parent –alu. Asso;Teaching aid comm. meeting	15 Seminar on legal provisions for women empower ment(T.Y.): HD	12	16	14	18 Inter Colligate Atheletic Meet: SPORTS	16	13 Seminar : Communicabl e diseases & prevention: SCIENCE	17	17	13	11	WED

DAYS	JUNE	JULY	AUGUST	SEPTEMBER	OCTOBER	NOVEMBER	DECEMBER	JANUARY	FEBRUARY	MARCH	APRIL	MAY	DAYS
THU	18 Discipline, campus maint; ladies room, planning, Health center, Feed back comm. meeting	16	13 Film Show on Water Conservation: NSS	17	15	19	17	14 SAHAKAR MAHARSHI SHANKARRAO MOHITEPATIL BIRTH ANNI.	18 Parnt Education Prog. : HD	18	14	12	THU
FRI	19 Computer edu; Remedial coaching, Stock main; Library adv; YCMOU, Gymkhana & sports Comm. meeting	17SELECTI ON OF NSS VOL.& ADMISSIO N.	14	18	16	20	18	15	19 SURVEYS & Discussion on health related topics.:SCIENCE	19	15	13	FRI
SAT	20 Counseling cell, Sexual harr; Cultural, NSS;Hostel,Grivan ce redressal , Home Sci. Asso. Comm.. meeting.	18	15Independ ance Day	19	17 Workshop on Food Art: FSN	21	19 Distribution of Nutritious Recipe: FSN	16	20	20	16	14	SAT
SUN	21	19	16	20	18	22	20	17	21	21	17	15	SUN
MON	22	20 NSS:ORI. BY PO TO NSS VOL.Mark et Survey :SCIENCE	17	21 Visit : Counselling Cell : HD	19	23 Admissions : Term II	21 Exhibition: FSN Food Stall: FSN	18 WORKSHO:Ga rment construction :TEXTILE	22	22	18	16	MON
TUE	23	21	18	22	20	24 Guest lecture on traffic rules :	22	19	23 Guest Lecture on Food Preservation: FSN	23	19	17	TUE

DAYS	JUNE	JULY	AUGUST	SEPTEMBER	OCTOBER	NOVEMBER	DECEMBER	JANUARY	FEBRUARY	MARCH	APRIL	MAY	DAYS
						NSS							
WED	24	22	19	23	21	25	23	20:Workshop on EI : HD	24	24	20	18	WED
THU	25 Guest lecture on reproductive health care(F.Y.) : HD	23	20 Workshop : Internet Surfing : SCIENCE	24 NSS Day Celebration: NSS	22	26	24	21	25	25	21	19	THU
FRI	26 Death anni. Of Smt. Ratnaprabhadevi Mohite Patil: CULTURAL	24	21 Workshop : various printing styles :TEXTILE	25	23	27	25	22	26	26	22	20	FRI
SAT	27 Medical Checkup : SCIENCE	25 Birth Anni. Of Smt. Ratnapra bhadevi Mohite Patil & Wel Come Party for Fresher's	22	26	24	28 Khel Melawa : HD	26	23 Workshop on Bakery Products: FSN	27	27	23	21	SAT
SUN	28	26	23	27	25	29	27	24	28	28	24	22	SUN
MON	29 Workshop: Natural Dyes :TEXTILE	27	24 Youth Festival CULTURAL.	28 Comp: Fabric painting:TEXTILE	26	30	28	25	29 Science Day : Quiz Comp SCIENCE	29 Practice Exam : EXAM	25	23	MON
TUE	30	28	25	29	27		29	26 Republic Day		30	26	24	TUE
WED		29	26	30	28		30	27			27	25	WED

DAYS	JUNE	JULY	AUGUST	SEPTEMBER	OCTOBER	NOVEMBER	DECEMBER	JANUARY	FEBRUARY	MARCH	APRIL	MAY	DAYS
THU		30 Exhibition on Human Rights (S.Y.):HD	27 Competition: Jagar Janivancha		29		31	28			28	26	THU
FRI		31	28 Temple Waste MGT : NSS		30			29			29	27	FRI
SAT			29					30 Comp: Debate : NSS			30 Staff Meeting	28	SAT
SUN			30					31				29	SUN
MON			31									30	MON
TUE												31	TUE