

Shikshan Prasark Mandal's

*Smt. Ratnaprabhadevi Mohite Patil College of Home
Science for Women, Akluj, Tal- Malshiras, Dist- Solapur.
413101 (Maharashtra)*

**Submission of
Internal Annual Quality Assurance Report
(AQAR)
(Revised in January 2014)**

To



राष्ट्रीय मूल्यांकन एवं प्रत्यायन परिषद्

विश्वविद्यालय अनुदान आयोग का स्वायत्त संस्थान

NATIONAL ASSESSMENT AND ACCREDITATION COUNCIL

*An Autonomous Institution of the University Grants Commission
P. O. Box. No. 1075, Opp: NLSIU, Nagarbhavi, Bangalore - 560 072 India*

The Annual Quality Assurance Report (AQAR) of the IQAC

Part – A

I. Details of the Institution

1.1 Name of the Institution

1.2 Address Line 1

Address Line 2

City/Town

State

Pin Code

Institution e-mail address

Contact Nos.

Name of the Head of the Institution:

Tel. No. with STD Code:

Mobile:

Name of the IQAC Co-ordinator:

Mobile:

IQAC e-mail address:

1.3 NAAC Track ID

1.4 NAAC Executive Committee No. & Date:

1.5 Website address:

www.srmphomesc.org

Web-link of the AQAR:

http://www.srmphomesc.org/images/IQAR/AQAR%202016-17.pdf

1.6 Accreditation Details

Sl. No.	Cycle	Grade	CGPA	Year of Accreditation	Validity Period
1	1 st Cycle	B	2.60	2012-13	Jan 4,2018

1.7 Date of Establishment of IQAC:

20/06/2012

1.8 AQAR for the year

2017-18

1.9 Details of the previous year's AQAR submitted to NAAC after the latest Assessment and Accreditation by NAAC (*for example AQAR 2010-11 submitted to NAAC on 12-10-2011*)

i. AQAR 2016-17 submitted to NAAC on 8-9-2017

1.10 Institutional Status

University State Central Deemed Private

Affiliated College Yes No

Constituent College Yes No

Autonomous college of UGC Yes No

Regulatory Agency approved Institution Yes No

(eg. AICTE, BCI, MCI, PCI, NCI)

Type of Institution Co-education Men Women

Urban Rural Tribal

Financial Status Grant-in-aid UGC 2(f) UGC 12B

Grant-in-aid + Self Financing Totally Self-financing

1.11 Type of Faculty / Programme

Arts Science Commerce Law PEI (Phys Edu)

TEI (Edu) Engineering Health Science Management

Others (Specify)

Home Science

1.12 Name of the Affiliating University (for the Colleges)

S.N.D.T.Women's University Mumbai

1.13 Special status conferred by Central/ State Government-- UGC/CSIR/DST/DBT/ICMR etc

Autonomy by State/Central Govt. / University

-

University with Potential for Excellence

-

UGC-CPE

-

DST Star Scheme

-

UGC-CE

-

UGC-Special Assistance Programme

-

DST-FIST

-

UGC-Innovative PG programmes

-

Any other (Specify)

-

UGC-COP Programmes

-

2. IQAC Composition and Activities

2.1 No. of Teachers

08

2.2 No. of Administrative / Technical staff

02

2.3 No. of students

02

2.4 No. of Management representatives

01

2.5 No. of Alumni

01

2.6 No. of any other stakeholder and

01

Community representatives

2.7 No. of Employers/ Industrialists

--

2.8 No. of other External Experts

--

2.9 Total No. of members

15

2.10 No. of IQAC meetings held 02

2.11 No. of meetings with various stakeholders:

No.

04

Faculty

02

Non-Teaching Staff, Students

02

-

Alumni

-

Others

2.12 Has IQAC received any funding from UGC during the year? Yes

No

If yes, mention the amount

-

2.13 Seminars and Conferences (only quality related)

(i) No. of Seminars/Conferences/ Workshops/Symposia organized by the IQAC

Total Nos. International National State Institution Level

(ii) Themes

2.14 Significant Activities and contributions made by IQAC

- Prepared and implemented annual plan for academic year 2017-18
- Organized student centric activities
- Monitored feedback mechanism of students
- Organized gender sensitizing programmes
- Organized environment awareness programme
- Motivated students and staff for conducting research activities
- Organized programmes for improving career opportunities
- Participated in cultural event organized by Shikshan Prasarak Manad .

2.15 Plan of Action by IQAC/Outcome

The plan of action chalked out by the IQAC in the beginning of the year towards quality enhancement and the outcome achieved by the end of the year *

Plan of Action	Achievements
Annexure I	Annexure II

* Attach the Academic Calendar of the year as Annexure.

2.15 Whether the AQAR was placed in statutory body Yes No

Management Syndicate Any other body

Provide the details of the action taken

Part – B

Criterion – I

I. Curricular Aspects

1.1 Details about Academic Programmes

Level of the Programme	Number of existing Programmes	Number of programmes added during the year	Number of self-financing programmes	Number of value added / Career Oriented programmes
PhD	-	-	-	-
PG	-	-	-	-
UG	02	-	-	-
PG Diploma	-	-	-	-
Advanced Diploma	-	-	-	-
Diploma	-	-	-	-
Certificate	-	-	-	-
Others	-	-	-	-
Total	02	-	-	-
Interdisciplinary	-	-	-	-
Innovative	-	-	-	-

- 1.2 (i) Flexibility of the Curriculum: CBCS/Core/Elective option / Open options
 (ii) Pattern of programmes:

Pattern	Number of programmes
Semester	01
Trimester	--
Annual	01

- 1.3 Feedback from stakeholders*
 (On all aspects)

(On syllabus)

Alumni Parents Employers Students
 Teacher
 Mode of feedback : Online Manual Co-operating schools (for PEI)

*Analysis of the feedback in the Annexure-III

- 1.4 Whether there is any revision/update of regulation or syllabi, if yes, mention their salient aspects.

Yes University restructure syllabi every 5th year it's been lastly restructured in 2013-14

- 1.5 Any new Department/Centre introduced during the year. If yes, give details.

--

Criterion – II

2. Teaching, Learning and Evaluation

2.1 Total No. of permanent faculty	Total	Asst. Professors	Associate Professors	Professors	Others
	08	06	--	--	02

2.2 No. of permanent faculty with Ph.D.

2.3 No. of Faculty Positions Recruited (R) and Vacant (V) during the year	Asst. Professors		Associate Professors		Professors		Others		Total	
	R	V	R	V	R	V	R	V	R	V
	06	01	-	-	-	-	02	01	08	02

2.4 No. of Guest and Visiting faculty and Temporary faculty

2.5 Faculty participation in conferences and symposia:

No. of Faculty	International level	National level	State level
Attended	1	5	3
Presented papers	1	2	3
Resource Persons	-	-	-

2.6 Innovative processes adopted by the institution in Teaching and Learning:

Use of ICT, Various student centric learning Methods Viz Group Discussion, Projects, Assignments, Debate, Survey, Field visits, Presentations, Workshops, Skits, Demonstrations, Exhibitions, Guest lecture, Films , Videos, Mock Interview , use of online resources to enhance teaching ,faculty use online groups such as google groups (IDA) and use social media sites such as facebook and whatsapp for sharing subject related information.

2.7 Total No. of actual teaching days during this academic year

2.8 Examination/ Evaluation Reforms initiated by the Institution

2.9 No. of faculty members involved in curriculum restructuring/revision/syllabus development as member of Board of Study/Faculty/Curriculum Development workshop

2.10 Average percentage of attendance of students

2.11 Course/Programme wise distribution of pass percentage:

Title of the Programme	Total no. of students appeared	Division					
		Distinction %	I %	II %	III %	ATKT/ Fail	Pass %
B.Sc (H.Sc) I yr	60	29	24	07	---	--	100%
B.Sc (H.Sc) II yr	65	28	20	06	---	11	100%
B.Sc(H.Sc)III yr	47	34	07	01	---	05	89.36

2.12 How does IQAC Contribute/Monitor/Evaluate the Teaching & Learning processes:

- Workload Distribution
- Meetings and discussions on teaching and learning process
- Encouraging faculty to Adopt innovative methods and techniques of teaching
- Preparation of Plan of Teaching
- Maintaining Teachers Diaries
- Submission of reports
- Attending conference on Best practices in teaching learning & evaluation
- Review of syllabus completion in meetings
- Students Feedback on Teachers performance
- IQAC monitors Student-teacher evaluation which is conducted semester wise, Class-wise and subject-wise

2.13 Initiatives undertaken towards faculty development

<i>Faculty / Staff Development Programmes</i>	<i>Number of faculty benefitted</i>
Refresher courses	-
UGC – Faculty Improvement Programme	-
HRD programmes	-
Orientation programmes	1
Faculty exchange programme	-
Staff training conducted by the university	-
Staff training conducted by other institutions	-
Summer / Winter schools, Workshops, etc.	3
Others	2

2.14 Details of Administrative and Technical staff

Category	Number of Permanent Employees	Number of Vacant Positions	Number of permanent positions filled during the Year	Number of positions filled temporarily
Administrative Staff	10	-	-	-
Technical Staff	-	-	-	-

Criterion – III

3. Research, Consultancy and Extension

3.1 Initiatives of the IQAC in Sensitizing/Promoting Research Climate in the institution

Research committee
Research based projects given to students
Promoting faculty for participation and presentation of research papers in seminar and conferences and publishing research papers in Journals
Promoting staff to complete their Ph.D. work

3.2 Details regarding major projects NA

	Completed	Ongoing	Sanctioned	Submitted
Number	-	-	-	-
Outlay in Rs. Lakhs	-	-	-	-

3.3 Details regarding minor projects NA

	Completed	Ongoing	Sanctioned	Submitted
Number	-	-	-	-
Outlay in Rs. Lakhs	-	-	-	-

3.4 Details on research publications

	International	National	Others
Peer Review Journals	9	-	-
Non-Peer Review Journals	1	-	-
e-Journals	-	-	-
Conference proceedings	-	-	-

3.5 Details on Impact factor of publications:

Range Average h-index Nos. in SCOPUS

3.6 Research funds sanctioned and received from various funding agencies, industry and other organisations

Nature of the Project	Duration Year	Name of the funding Agency	Total grant sanctioned	Received
Major projects	-	-	-	-
Minor Projects	-	-	-	-
Interdisciplinary Projects	-	-	-	-
Industry sponsored	-	-	-	-
Projects sponsored by the University/ College	-	-	-	-
Students research projects <i>(other than compulsory by the University)</i>	-	-	-	-
Any other(Specify)	-	-	-	-
Total	-	-	-	-

3.7 No. of books published i) With ISBN No. Chapters in Edited Books

ii) Without ISBN No.

3.8 No. of University Departments receiving funds from

UGC-SAP CAS DST-FIST
DPE DBT Scheme/funds

3.9 For colleges

Autonomy CPE DBT Star Scheme
INSPIRE CE Any Other (specify)

3.10 Revenue generated through consultancy

3.11 No. of conferences

organized by the Institution

Level	International	National	State	University	College
Number	-	-	-	-	-
Sponsoring agencies	-	-	-	-	-

3.12 No. of faculty served as experts, chairpersons or resource persons

3.13 No. of collaborations

International National Any other

3.14 No. of linkages created during this year

3.15 Total budget for research for current year in lakhs :

From Funding agency From Management of University/College

Total

3.16 No. of patents received this year

Type of Patent		Number
National	Applied	-
	Granted	-
International	Applied	-
	Granted	-
Commercialised	Applied	-
	Granted	-

3.17 No. of research awards/ recognitions received by faculty and research fellows
Of the institute in the year

Total	International	National	State	University	Dist	College
-	-	-	-	-	-	-

3.18 No. of faculty from the Institution who are Ph. D. Guides and students registered under them

3.19 No. of Ph.D. awarded by faculty from the Institution

3.20 No. of Research scholars receiving the Fellowships (Newly enrolled + existing ones)

JRF SRF Project Fellows Any other

3.21 No. of students Participated in NSS events:

University level State level

National level International level

3.22 No. of students participated in NCC events:

University level State level
National level International level

3.23 No. of Awards won in NSS:

University level State level
National level International level

3.24 No. of Awards won in NCC:

University level State level
National level International level

3.25 No. of Extension activities organized

University forum College forum
NCC NSS Any other

3.26 Major Activities during the year in the sphere of extension activities and Institutional Social Responsibility

Dept.	No. of Activities	Details
Food Science & Nutrition	3	1. Lecture delivered in Breastfeeding promotion week Workshop for pregnant & lactating woman. Topic on 'Importance of Breastfeeding Diet for pregnant & lactating woman Posters & charts Food and Nutrition' at Rural Hospital, Akluj. 2. Lecture delivered in Workshop for School students. Topic on 'Stress Management' for 5 th to 10 th Class students at Maharshi Shankarao Mohite-Patil Prashala, Yashwant Nagar, Akluj. 3. Distribution of Nutritious recipe Fruit salad prepared and distributed for Students of Vijay Vastigruh, Akluj.
Human Development	6	1.Guiding speech on 'Changing Role of Women' for 70 village Women and AWW at Anganwadi Centre, Bhosale Wasti, Khandali . 2. Guiding speech on 'Challenges in front of rural women in 21 st century' at Akluj. 3. Lecture delivered on 'Aahar va Aarogya' for 10 th standard students at Aklai Vidyalay, Akluj. 4. Guiding lecture delivered on 'Health status of women and care' for 120 women at Nagarparishad, Faltan. 5. Parent Education programme on 'Parent-child interaction and Responsible Parenting' for 500 students and parents at Krishnanand Vidhyalay, Patilvasti. 6.Exhibition on 'Low cost and educational / teaching material at Sadashivrao Mane Preprimary School , Akluj.
Textile & Clothing	1	1.Training of Warli Painting.
Science	1	1."Best Out Of Waste" Activity was conducted for First Year students in which students crafted and created the best articles using the waste materials in their house. Environmental awareness was the sole purpose behind the activity. The exhibition of the articles was organized for all students in the campus.
N.S.S Camp	4	1.Workshop on hand embroidery. 2. Tree plantation 3. Cleanliness Project. 4. Eco-bean Project

Criterion – IV

4. Infrastructure and Learning Resources

4.1 Details of increase in infrastructure facilities:

Facilities	Existing	Newly created	Source of Fund	Total
Campus area	12.87 acres	-	-	-
Class rooms	03	-	-	-
Laboratories	07	-	-	-
Seminar Halls	01	-	-	-
No. of important equipments purchased (\geq 1-0 lakh) during the current year.	-	-	-	-
Value of the equipment purchased during the year (Rs. in Lakhs)	-	-	-	-
Others	-	-	-	-

4.2 Computerization of administration and library

Yes, Library is fully computerized with all the functions and we are using Library Manager Software 2.0 College administration conducts online admissions and examination process etc.

4.3 Library services:

Sr. No.	Particulars	Existing No.	Existing Value Rs.	Newly Added No.	Newly added Value Rs.	Total No.	Total Value
1	Text Books	2094	558967/-	---	---	2094	558967/-
2	Reference Books	775	128025/-	11	1656/-	786	129681/-
3	e-books	N-LIST Programme	25000/-	---	5900/-		30900/-
4	Journals	25	79639/-		---	25	79639/-
5	e-journals	N-LIST Programme					
6	Digital Database	S.N.D.T. Women's University Databases	75500/-		18500/-		94000/-
7	CD & Videos	217	45926/-		----	217	45926/-
8	Others Specify	-----	----	----	----	----	----

4.4 Technology up gradation (overall)

	Total Computers	Computer Labs	Internet	Browsing Centres	Computer Centres	Office	Depart-ments	Others
Existing	20	16	10 (office -02, computer lab- 07 Principals cabin-01)	-	-	02	01	01
Added	-	-	-	-	-	-	-	-
Total	20	16	12	-	-	02	01	01

4.5 Computer, Internet access, training to teachers and students and any other programme for technology up gradation (Networking, e-Governance etc.)

Training on sndt.digital.ac website for F.Y.B.Sc students
Training on Online Admission Process on S.N.D.T. Web Portal for Staff
Some department is provided with computer.
Resources from various websites, web-links are used by the faculty to strengthen for the teaching learning process.
Presentation on Operating System
Presentation on Introduction to Virus &Antivirus
Activity on Android mobile and App's
Introduction to Internet
Introduction to email
Workshop on how to do Online Transactions

4.6 Amount spent on maintenance in lakhs:

i) ICT	Rs.0 .15025 /-
ii) Campus Infrastructure and facilities	Rs. 1.34189 /-
iii) Equipments	-
iv) Others	Rs. 7882/-
Total:	Rs. 1.57096 /-

Criterion – V

5. Student Support and Progression

5.1 Contribution of IQAC in enhancing awareness about Student Support Services

Student's representative in IQAC
Student feedback
Programmes organized for students for creating awareness regarding support services

5.2 Efforts made by the institution for tracking the progression

Actions taken on suggestions
Student feedback
Encouraging students for participation in different activities
Monitoring through the mentor system
Collection of data regarding placement

5.3 (a) Total Number of students

UG	PG	Ph. D.	Others
185	-	-	-

(b) No. of students outside the state

-

(c) No. of international students

-

Men	No	%
	-	-

Women

No	%
185	100

Last Year (2016-17)								This Year (2017-18)							
General	SC	ST	OBC	VJNT	SBC	Physically Challenged	Total	General	SC	ST	OBC	VJNT	SBC	Physically Challenged	Total
81	33	-	30	31	01	-	176	87	34	-	29	33	02	-	185

Demand ratio 1: 0.87 Dropout % 11.85

5.4 Details of student support mechanism for coaching for competitive examinations (If any)

Activities: Issued Books
Guidance
Display of MPSC & other Exam advertisements
Guidance for online form filling

No. of students beneficiaries

20

5.5 No. of students qualified in these examinations

NET	<input type="text" value="-"/>	SET/SLET	<input type="text" value="-"/>	GATE	<input type="text" value="-"/>	CAT	<input type="text" value="-"/>
IAS/IPS etc	<input type="text" value="-"/>	State PSC	<input type="text" value="-"/>	UPSC	<input type="text" value="-"/>	Others	<input type="text" value="-"/>

5.6 Details of student counselling and career guidance

Career guidance lecture on 'Essentials for successful Entrepreneur' For T.Y. students-40
Career guidance lecture on 'Entrepreneurship Development' For T.Y. students-40
Career guidance lecture for all students-150
Career guidance lecture on Career guidance (Competitive Exam) for all students-150
Orientation on Career opportunities to F.Y-60
Counselling cell-61

No. of students benefitted

5.7 Details of campus placement

<i>On campus</i>			<i>Off Campus</i>
Number of Organizations Visited	Number of Students Participated	Number of Students Placed	Number of Students Placed
-	-	-	4

5.8 Details of gender sensitization programmes

Poster Exhibition on Issues related to women
Skit Competition
Essay competition
Group discussion on women issues

5.9 Students Activities

5.9.1 No. of students participated in Sports, Games and other events

State/ University level National level International level

No. of students participated in cultural events

State/ University level National level International level

5.9.2 No. of medals /awards won by students in Sports, Games and other events

Sports: State/ University level National level International level

Cultural: State/ University level National level International level

5.10 Scholarships and Financial Support

	Number of students	Amount
Financial support from institution	-	-
Financial support from government	67	Rs.479760/-
Financial support from other sources	-	-
Number of students who received International/ National recognitions	-	-

5.11 Student organised / initiatives

Fairs : State/ University level National level International level

Exhibition: State/ University level National level International level

5.12 No. of social initiatives undertaken by the students

- | |
|--|
| Participation in Tree plantation

Participation of students in nutrition awareness programme

Participation of students in Exhibition on low cost education material for parents and teachers

Participation in various NSS activities |
|--|

5.13 Major grievances of students (if any) redressed: _____

Criterion – VI

6. Governance, Leadership and Management

6.1 State the Vision and Mission of the institution

Vision: Tewo Sada Dnyanmaya Pradeep

Mission: Empowerment of Rural Women for Empowerment of Society

6.2 Does the Institution has a management Information System

Yes (MIS operated by Govt of Maharashtra state)

6.3 Quality improvement strategies adopted by the institution for each of the following:

6.3.1 Curriculum Development

-

6.3.2 Teaching and Learning

Various techniques and teaching aids used for teaching and learning
Preparation of various teaching aids viz PPT, Models, Charts and Posters
Use of online videos and interactive multimedia
Field visits, Group discussions, Presentations, Projects, Assignments
Role play, Mock Test
Preparation of Question banks
Activities for Advanced and progressive learners
Remedial coaching for English
Mentoring students on teaching and learning
Extra guidance to failed students

6.3.3 Examination and Evaluation

Classroom test on each module
Presentations, Projects, Assignments
Continuous evaluation
Practice examination

6.3.4 Research and Development

Encouraging staff to participate in research activities
Modular system
Participation of teachers in seminar, conferences and workshop
Preparation and publication of research papers
Allocation of research based projects

6.3.5 Library, ICT and physical infrastructure / instrumentation

Subscription of magazines and Journals
Prepare ICT for teaching
Maintenance of existing infrastructure
Membership of NDL (All teaching staff)
Purchase of lab wares and books

6.3.6 Human Resource Management

Attendance of faculty in Seminars, Conference and Workshops
Staff academy activities
Organization of guest lectures and workshops

6.3.7 Faculty and Staff recruitment

Appointment of CHB teachers as per need
Invited guest lecturers for specific topics

6.3.8 Industry Interaction / Collaboration

Preschools, Schools, Anganwadi, Rural Hospital,
Blood Bank, Cooperative Milk Industry

6.3.9 Admission of Students

- Campaigning, Banners and pamphlets, Counselling
- Admission of students from different strata of society
- Encouraged students for readmission in the course
- Counselling of students and parents for continuation of education
- Creating awareness regarding Home Science among the people while conducting other activities
- Use of social media for admission campaigning

6.4 Welfare schemes for	Teaching	Sevak kalyan Nidhi Insurance scheme
	Non teaching	Sevak kalyan Nidhi Insurance scheme
	Students	Vidyathri vima

6.5 Total corpus fund generated

6.6 Whether annual financial audit has been done Yes No

6.7 Whether Academic and Administrative Audit (AAA) has been done?

Audit Type	External		Internal	
	Yes/No	Agency	Yes/No	Authority
Academic	-	-	Yes	University
Administrative	Yes	S.P.Mandal, Akluj	Yes	Principal

6.8 Does the University/ Autonomous College declare results within 30 days?

For UG Programmes Yes No

For PG Programmes Yes No

6.9 What efforts are made by the University/ Autonomous College for Examination Reforms?

- Online question papers on portal 15 to 30 min prior to exam
- Examination forms filled on portal
- Online Hall tickets
- Syllabus restructured in modular form
- Each module is evaluated based on practical approach
- OMR answer sheet provided by University
- 10 Point grade system

6.10 What efforts are made by the University to promote autonomy in the affiliated/constituent colleges?

University calls for proposals to be submitted to UGC under the scheme of College for Potential Excellence

6.11 Activities and support from the Alumni Association

- Visits to college and communication with the present student
- Encourage students for further studies
- Participate in counselling for admissions
- Invited and participated in various programmes organized in college

6.12 Activities and support from the Parent – Teacher Association

- Communication
- Suggestions
- Feedback

6.13 Development programmes for support staff

6.14 Initiatives taken by the institution to make the campus eco-friendly

- ☐ Tree plantation
- ☐ Seed Bank
- ☐ Temple waste management
- ☐ Cleaning premises
- ☐ Workshop on Eco friendly dyes
- ☐ “Best Out Of Waste” Activity
- ☐ Project on Eco friendly dyes and materials
- ☐ Moving on to paperless work
- ☐ Minimal use of electricity
- ☐ Use of eco bins in college

Criterion – VII

7. Innovations and Best Practices

7.1 Innovations introduced during this academic year which have created a positive impact on the functioning of the institution. Give details.

<ul style="list-style-type: none"><input type="checkbox"/> Book reading day celebration<input type="checkbox"/> Environmental Awareness programme
--

7.2 Provide the Action Taken Report (ATR) based on the plan of action decided upon at the beginning of the year

Annexure IV

7.3 Give two Best Practices of the institution

<ul style="list-style-type: none"><input type="checkbox"/> Earn and learn scheme through Projects<input type="checkbox"/> Field work<input type="checkbox"/> Mentor ward system<input type="checkbox"/> Feedback system<input type="checkbox"/> Savitribai Dattak Yojana for financial support for economically weaker section<input type="checkbox"/> Distribution of nutritious recipes<input type="checkbox"/> Workshop on eco friendly dyes

7.4 Contribution to environmental awareness / protection

<ul style="list-style-type: none"><input type="checkbox"/> Tree plantation<input type="checkbox"/> Temple waste management<input type="checkbox"/> Swachata abhiyan<input type="checkbox"/> Workshops on natural dyes<input type="checkbox"/> .“Best Out Of Waste” Activity<input type="checkbox"/> Project on Eco friendly dyes and materials

7.5 Whether environmental audit was conducted?

Yes No

7.6 Any other relevant information the institution wishes to add. (for example SWOT Analysis)

<p>Strength:</p> <ul style="list-style-type: none">▪ Increased students strength due to efforts taken by institute▪ Students of S.Y won second rank of University Best player▪ College won the third place in Intercollegiate Athletics, Langadi Fencing and Tug of war tournament▪ Physical Director of College won helpful and supporting Teacher award of University <p>Weakness:</p> <ul style="list-style-type: none">▪ Less student strength: Admission campaigning was done for improving student strength.▪ Students less confidence in communicating in English: Efforts made for improving students confidence in communicating in English through various activities

8. Plans of institution for next year

Annexure V

Name *Dr. Bhosale Bharati Sambhajirao*

Name *Dr Surve Rahul Nivruti*

Signature of the Coordinator, IQAC

Signature of the Chairperson, IQAC

IQAC Coordinator

PRINCIPAL

Smt. Ratnaprabhadevi Mohite-Patil
College Of Home Science For Women
Akluj Tal. Malshiras Dist. Solapur

Smt. Ratnaprabhadevi Mohite-Patil
College of Home Science for Women
Akluj, Tal. Malshiras. Dist Solapur



Achievements :

- Lectures organized on various issues created awareness and enhanced knowledge among students regarding various issues related to women, society, environment, health, career opportunities etc.
 - Student learnt about societal problems and participated in various social work through N.S.S. activities. Students learnt about working in group, leading the group etc.
 - Students interacted with their academic peers through various cultural events, sport events and leadership camp.
 - Various activities developed self confidence in students through participation, interactions and their achievements.
 - Student gained knowledge and skills through skill oriented programmes.
 - Students gained entrepreneurship skills and market skills through projects and stalls.
 - Field visits helped students to aware about surroundings, observe and report writing skills .Students got practical experience.
 - Participation and achievements in various competitions developed sport spirit among the students.
 - Strengthened teaching learning Process by using effective use of ICT and various teaching learning methods
 - Purchased of books, research journals and magazines related to various aspects.
 - Organization of value education programmes viz. Teachers day celebration
 - Collection and analysis of Student feedback on teaching learning process, teachers' performance and syllabus
 - Motivated faculty members and students to undertake research projects under internship/ project
 - Encouraged faculty members for research publications
- International: 10
- Encouraged faculty members for participation in Seminars/workshops/conferences
- International- 01 National-05 State-03

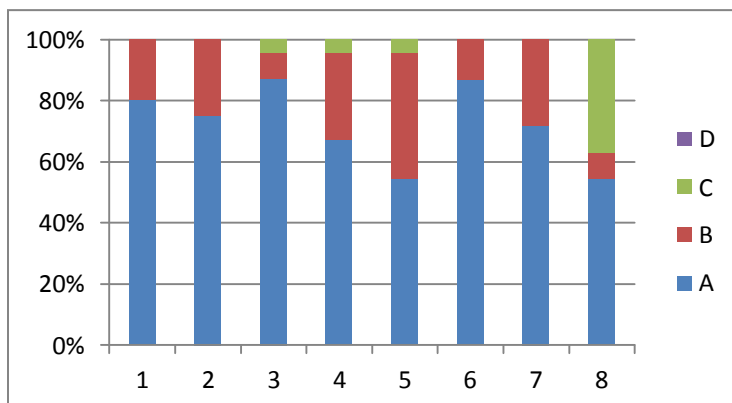
ANALYSIS OF FEEDBACK FROM STUDENTS

QUESTIONNAIRE NO.01

Academic Year : 2017-18

CLASS : T.Y.B.Sc.

Que. No.	Total Responses	Answer option							
		A		B		C		D	
		Number	%	Number	%	Number	%	Number	%
1	46	37	80.43	9	19.56	0	0	0	0
2	46	33	71.73	11	23.91	0	0	2	4.34
3	46	40	86.95	4	8.69	2	4.34	0	0
4	46	31	67.39	13	28.26	2	4.34	0	0
5	46	25	54.34	19	41.30	2	4.34	0	0
6	46	40	86.95	6	13.04	0	0	0	0
7	46	33	71.73	13	28.26	0	0	0	0
8	46	25	54.34	4	8.69	17	36.95	0	0



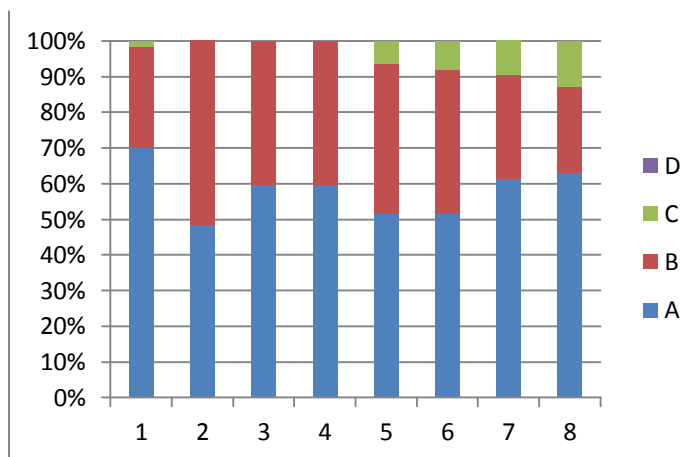
ANALYSIS OF FEEDBACK FROM STUDENTS

QUESTIONNAIRE NO.01

Academic Year : 2017-18

CLASS : S.Y.B.Sc.

Que. No.	Total Responses	Answer option							
		A		B		C		D	
		Number	%	Number	%	Number	%	Number	%
1	62	44	70.96	18	29.03	1	1.61	0	0
2	62	30	48.38	32	51.61	0	0	0	0
3	62	37	59.67	25	40.32	0	0	0	0
4	62	37	59.67	25	40.32	0	0	0	0
5	62	32	51.61	26	41.93	2	6.46	0	0
6	62	32	51.61	25	40.32	5	8.06	0	0
7	62	38	61.29	18	29.03	6	9.67	0	0
8	62	39	62.90	15	24.19	8	12.90	0	0

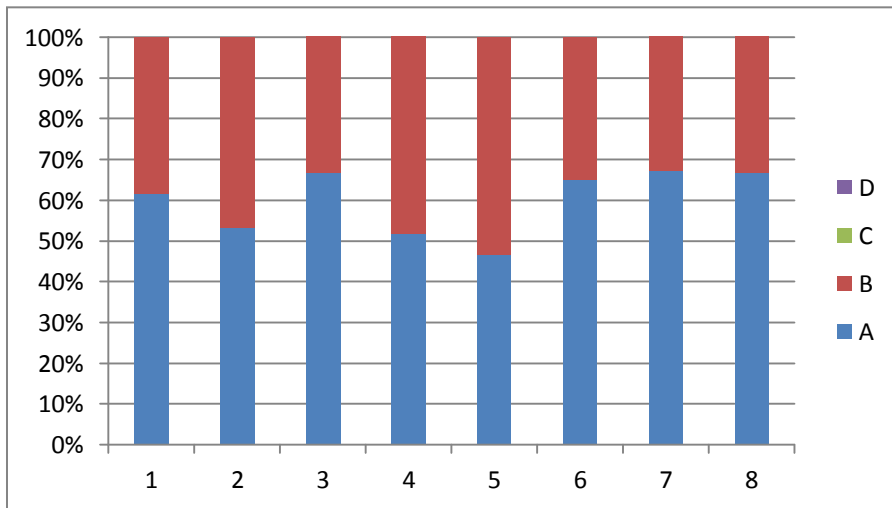


QUESTIONNAIRE NO.01

Academic Year : 2017-18

CLASS : F.Y.B.Sc.

Que. No.	Total Responses	Answer option							
		A		B		C		D	
		Number	%	Number	%	Number	%	Number	%
1	60	37	61.66	23	38.33	0	0	0	0
2	60	32	53.33	28	46.66	0	0	0	0
3	60	40	66.66	20	33.33	0	0	0	0
4	60	31	51.66	29	48.33	0	0	0	0
5	60	28	46.66	32	53.33	0	0	0	0
6	60	39	65	21	35	0	0	0	0
7	60	33	55	45	27	0	0	0	0
8	60	39	66.66	20	33.33	0	0	0	0



ANALYSIS OF FEEDBACK ON TEACHER

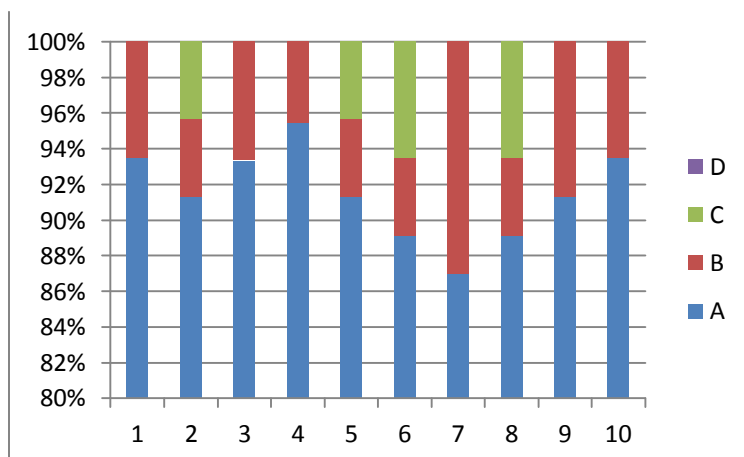
QUESTIONNAIRE NO .02

Academic Year: 2017-18

Name of Teacher : Dr.Bharati Bhosale

C lass -T.Y.B.Sc.

Que. No.	Total Responses	Answer option							
		A		B		C		D	
		Number	%	Number	%	Number	%	Number	%
1	46	43	93.47	3	6.52	0	0	0	0
2	46	42	91.30	2	4.34	2	4.34	0	0
3	46	42	91.30	3	6.52	0	0	0	0
4	46	42	91.30	2	4.34	0	0	0	0
5	46	42	91.30	2	4.34	2	4.34	0	0
6	46	41	89.13	2	4.34	3	6.52	0	0
7	46	40	86.95	6	13.04	0	0	0	0
8	46	41	89.13	2	4.34	3	6.52	0	0
9	46	42	91.30	4	8.69	0	0	0	0
10	46	43	93.47	3	6.52	0	0	0	0



ANALYSIS OF FEEDBACK ON TEACHER

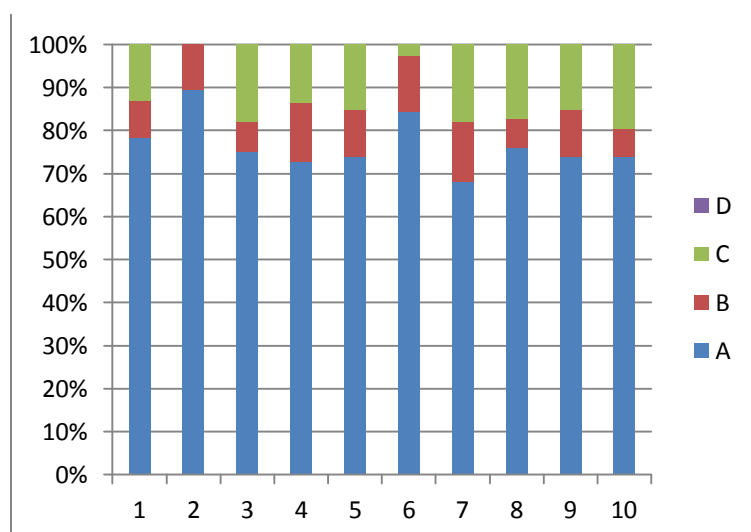
QUESTIONNAIRE NO .02

Academic Year: 2017-18

Name of Teacher : Prof.Ghadge A.B.

class -T.Y.B.Sc.

Que. No.	Total Responses	Answer option							
		A		B		C		D	
		Number	%	Number	%	Number	%	Number	%
1	46	36	78.26	4	8.68	6	13.04	0	0
2	46	34	73.91	4	8.68	0	0	0	0
3	46	33	71.73	3	6.52	8	17.34	0	0
4	46	32	69.56	6	13.04	6	13.04	0	0
5	46	33	73.91	5	10.86	7	15.21	0	0
6	46	32	69.56	5	10.86	1	2.17	0	0
7	46	34	73.91	7	15.21	9	19.55	0	0
8	46	35	76.08	3	6.52	8	17.38	0	0
9	46	34	73.91	5	10.86	7	15.21	0	0
10	46	34	73.91	3	6.52	9	19.55	0	0



ANALYSIS OF FEEDBACK ON TEACHER

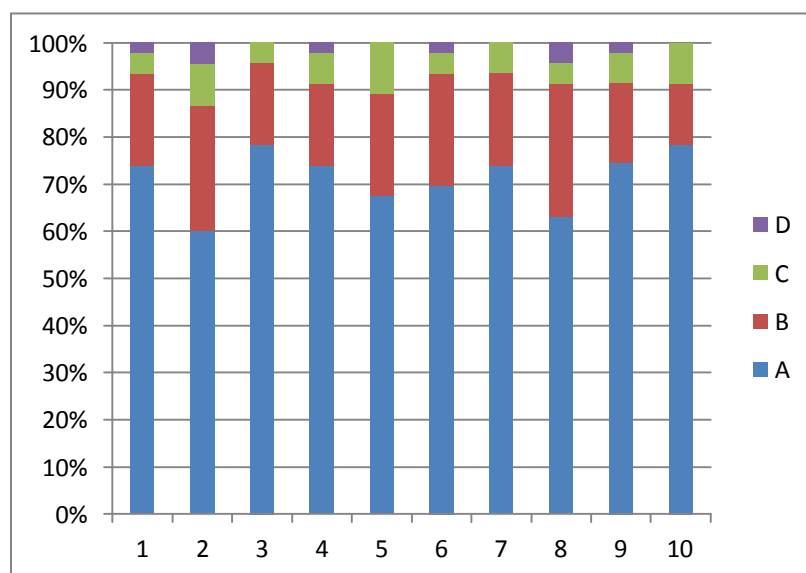
QUESTIONNAIRE NO .02

Academic Year: 2017-18

Name of Teacher : DR. Surve R.N.

class -T.Y.B.Sc.

Que. No.	Total Responses	Answer option							
		A		B		C		D	
		Number	%	Number	%	Number	%	Number	%
1	46	34	73.91	9	19.56	2	4.34	1	2.17
2	46	27	58.69	12	26.08	4	8.69	2	4.34
3	46	36	78.26	8	17.39	2	4.34	0	0
4	46	34	73.91	8	17.39	3	6.52	1	2.17
5	46	31	67.39	10	21.73	5	10.86	0	0
6	46	32	69.56	11	23.91	2	4.34	1	2.17
7	46	34	73.91	9	19.56	3	6.52	0	0
8	46	29	63.04	13	28.26	2	4.34	2	4.34
9	46	35	76.08	7	17.39	3	6.52	1	2.17
10	46	36	78.26	6	13.04	4	8.69	0	0



ANALYSIS OF FEEDBACK ON TEACHER

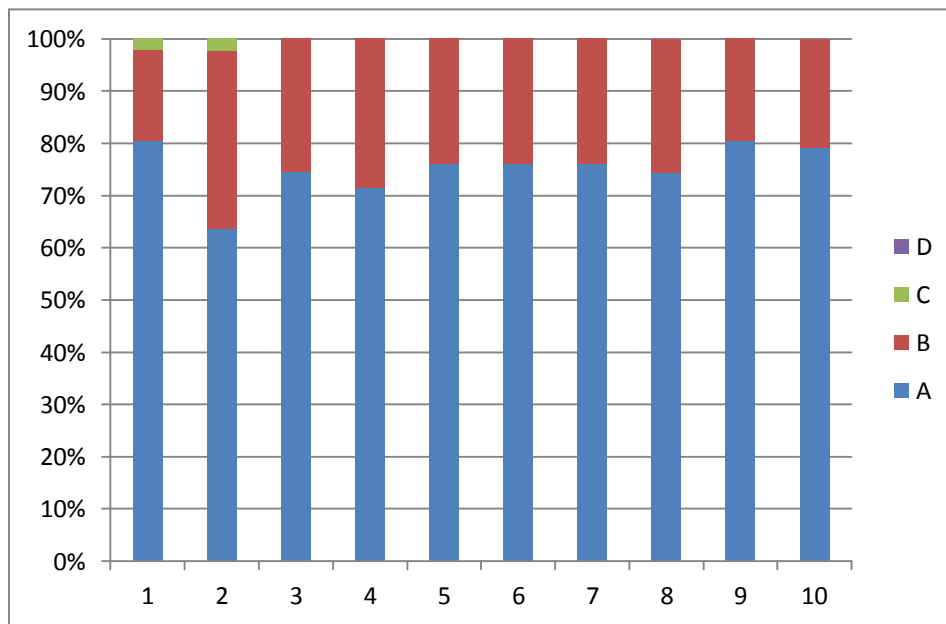
QUESTIONNAIRE NO .02

Academic Year: 2017-18

Name of Teacher : Dr.Manohar J.B.

class -T.Y.B.Sc.

Que. No.	Total Responses	Answer option							
		A		B		C		D	
		Number	%	Number	%	Number	%	Number	%
1	46	37	80.43	8	17.39	1	2.17	0	0
2	46	28	60.86	15	32.60	1	2.17	0	0
3	46	38	82.60	13	28.26	0	0	0	0
4	46	30	65.21	12	26.08	0	0	0	0
5	46	35	76.0	11	23.91	0	0	0	0
6	46	38	82.60	12	26.08	0	0	0	0
7	46	38	82.60	12	26.08	0	0	0	0
8	46	35	76.0	12	26.08	0	0	0	0
9	46	37	80.43	9	19.56	0	0	0	0
10	46	38	82.60	10	21.73	0	0	0	0



ANALYSIS OF FEEDBACK ON TEACHER

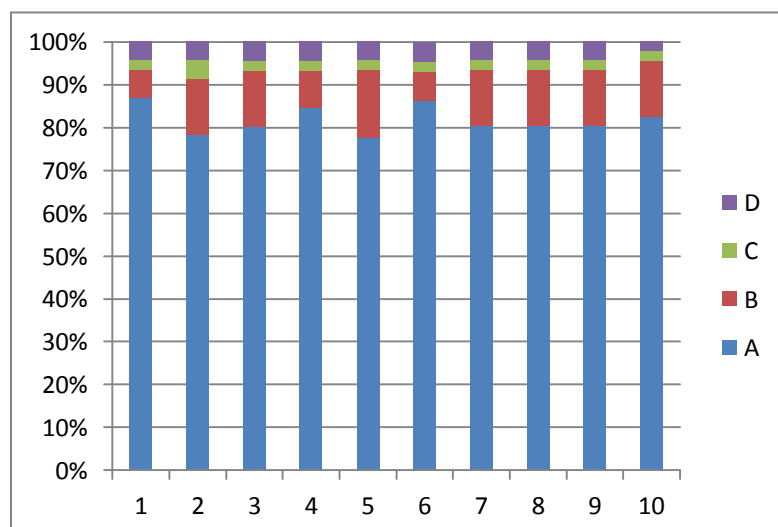
QUESTIONNAIRE NO .02

Academic Year: 2017-18

Name of Teacher : Dr.Bhise C.D.

class -T.Y.B.Sc.

Que. No.	Total Responses	Answer option							
		A		B		C		D	
		Number	%	Number	%	Number	%	Number	%
1	46	40	86.95	3	6.51	1	2.17	2	4.34
2	46	36	78.26	6	13.02	2	4.34	2	4.34
3	46	36	78.26	6	13.02	1	2.17	2	4.34
4	46	38	82.60	4	8.68	1	2.17	2	4.34
5	46	36	78.26	12	16.04	1	2.17	2	4.34
6	46	37	80.83	3	6.51	1	2.17	2	4.34
7	46	37	80.83	6	13.02	1	2.17	2	4.34
8	46	37	80.83	6	13.02	1	2.17	2	4.34
9	46	37	80.83	6	13.02	1	2.17	2	4.34
10	46	38	82.60	6	13.02	1	2.17	1	2.17

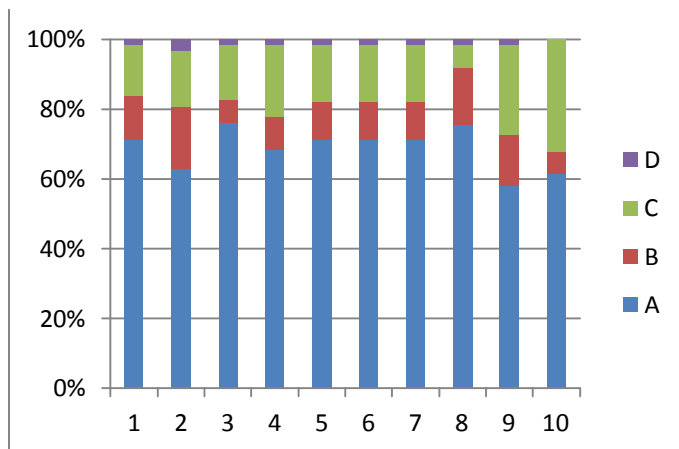


ANALYSIS OF FEEDBACK ON TEACHER
QUESTIONNAIRE NO .02
Academic Year: 2017-18

Name of Teacher : Dr.Surve R.N.

class -S.Y.B.Sc.

Que. No.	Total Responses	Answer option							
		A		B		C		D	
		Number	%	Number	%	Number	%	Number	%
1	62	44	70.96	8	12.90	9	14.49	1	1.61
2	62	39	62.90	11	17.74	10	16.12	2	3.22
3	62	48	77.41	4	6.45	10	16.12	1	1.61
4	62	43	69.35	6	9.67	13	20.96	1	1.61
5	62	44	70.96	7	11.29	10	16.12	1	1.61
6	62	44	70.96	7	11.29	10	16.12	1	1.61
7	62	44	70.96	7	11.29	10	16.12	1	1.61
8	62	47	75.80	10	16.62	4	6.44	1	1.61
9	62	36	58.06	9	14.51	16	25.76	1	1.61
10	62	38	61.29	4	6.45	20	32.25	0	0



ANALYSIS OF FEEDBACK ON TEACHER

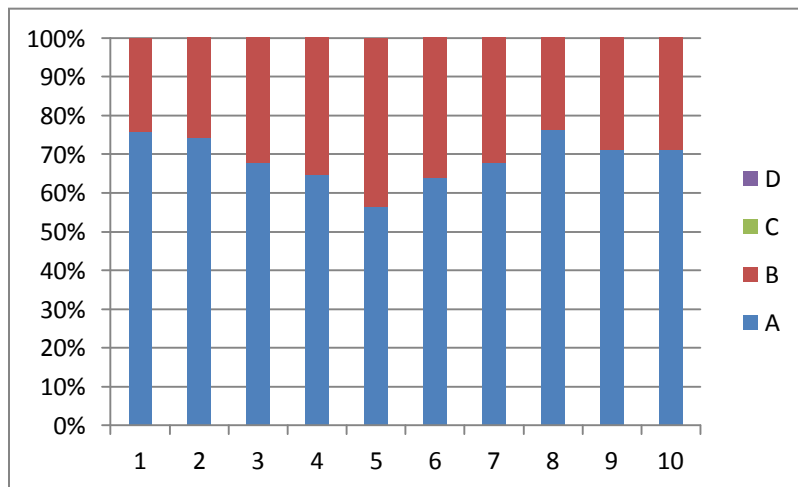
QUESTIONNAIRE NO .02

Academic Year: 2017-18

Name of Teacher : Dr.Bharati Bhosale

class -S.Y.B.Sc.

Que. No.	Total Responses	Answer option							
		A		B		C		D	
		Number	%	Number	%	Number	%	Number	%
1	62	47	75.80	15	24.19	0	0	0	0
2	62	43	69.35	15	24.19	0	0	0	0
3	62	42	67.74	20	32.25	0	0	0	0
4	62	40	64.51	22	35.47	0	0	0	0
5	62	35	56.45	27	43.54	0	0	0	0
6	62	39	62.90	22	35.47	0	0	0	0
7	62	42	67.74	20	32.25	0	0	0	0
8	62	45	72.58	14	22.58	0	0	0	0
9	62	44	70.96	18	29.03	0	0	0	0
10	62	44	70.96	18	29.03	0	0	0	0



ANALYSIS OF FEEDBACK ON TEACHER

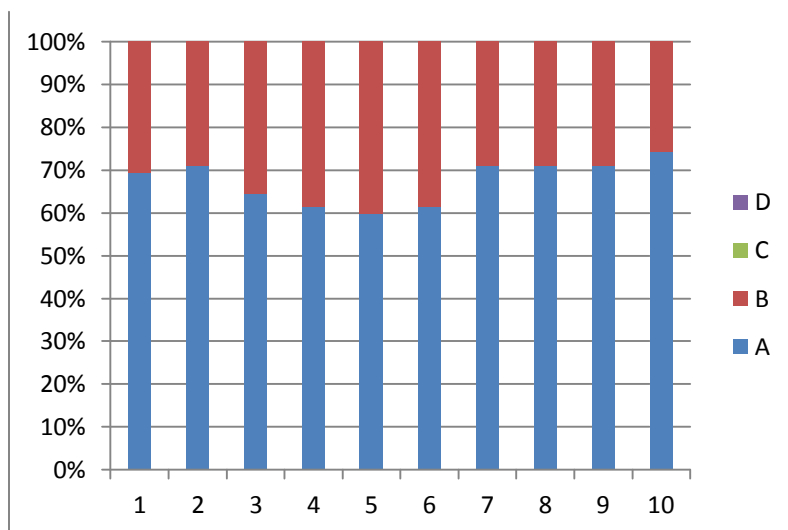
QUESTIONNAIRE NO .02

Academic Year: 2017-18

Name of Teacher : Dr.Jaysheela Manohar

class -S.Y.B.Sc.

Que. No.	Total Responses	Answer option							
		A		B		C		D	
		Number	%	Number	%	Number	%	Number	%
1	62	43	69.35	19	30.64	0	0	0	0
2	62	44	70.96	18	29.03	0	0	0	0
3	62	40	64.51	15	35.49	0	0	0	0
4	62	38	61.29	24	38.70	0	0	0	0
5	62	37	59.67	25	40.32	0	0	0	0
6	62	38	61.29	24	38.70	0	0	0	0
7	62	44	70.96	18	29.03	0	0	0	0
8	62	44	70.96	18	29.03	0	0	0	0
9	62	44	70.96	18	29.03	0	0	0	0
10	62	46	74.19	16	25.76	0	0	0	0



ANALYSIS OF FEEDBACK ON TEACHER

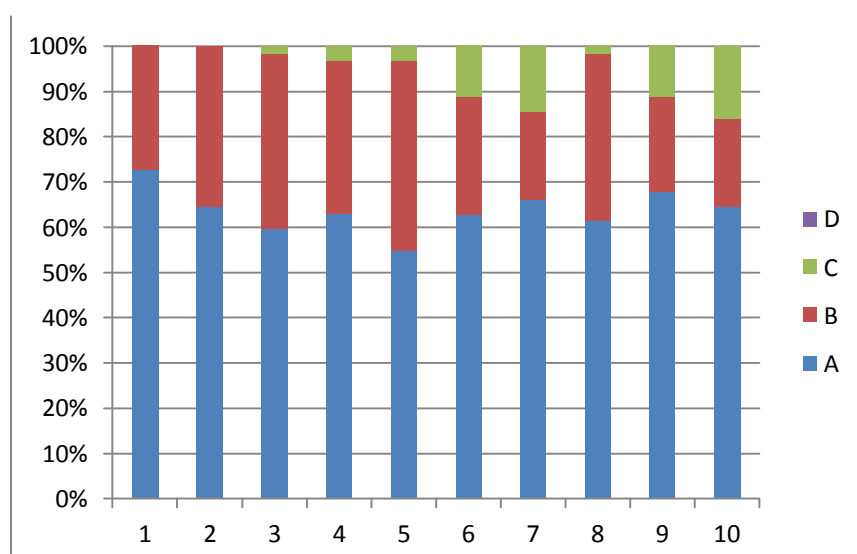
QUESTIONNAIRE NO .02

Academic Year: 2017-18

Name of Teacher : Dr.Chaya Bhise

class -S.Y.B.Sc.

Que. No.	Total Responses	Answer option							
		A		B		C		D	
		Number	%	Number	%	Number	%	Number	%
1	62	45	72.58	17	27.41	0	0	0	0
2	62	40	64.51	22	35.47	0	0	0	0
3	62	37	59.67	18	38.72	1	1.61	0	0
4	62	39	62.90	24	33.88	2	3.22	0	0
5	62	34	54.83	26	41.93	2	3.22	0	0
6	62	39	62.90	16	25.80	7	11.27	0	0
7	62	41	66.12	12	19.35	9	14.49	0	0
8	62	38	61.29	37	37.09	1	1.61	0	0
9	62	42	67.74	13	20.96	7	11.27	0	0
10	62	40	64.51	12	19.35	10	16.12	0	0

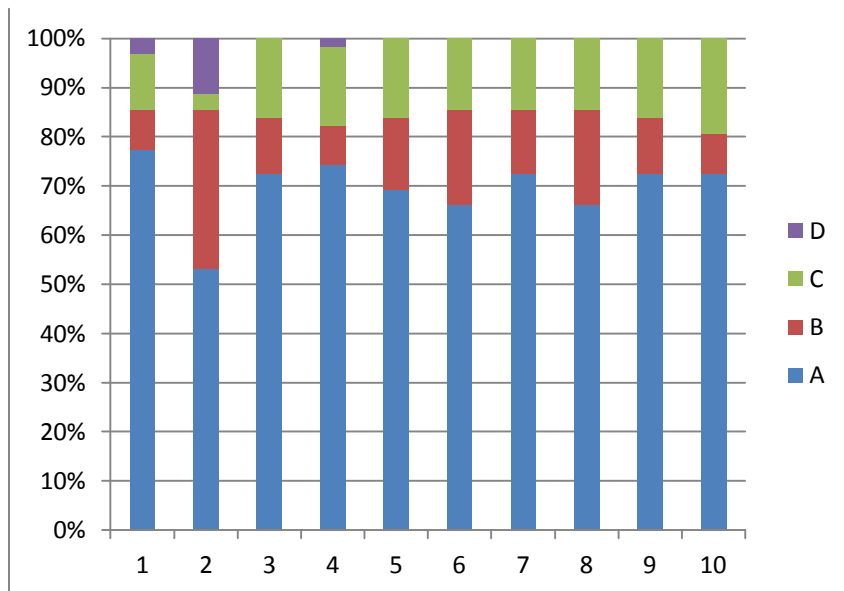


ANALYSIS OF FEEDBACK ON TEACHER
QUESTIONNAIRE NO .02
Academic Year: 2017-18

Name of Teacher : Prof.R.R.Nimbhorkar

class -S.Y.B.Sc.

Que. No.	Total Responses	Answer option							
		A		B		C		D	
		Number	%	Number	%	Number	%	Number	%
1	62	48	77.41	5	8.06	7	11.27	2	3.22
2	62	33	53.22	20	32.25	2	3.22	7	11.27
3	62	45	72.58	7	11.27	10	16.12	0	0
4	62	46	74.19	5	8.05	10	16.12	1	1.61
5	62	43	69.35	9	14.549	10	16.12	0	0
6	62	41	66.12	12	19.35	14	14.49	0	0
7	62	45	72.58	8	12.90	14	14.49	0	0
8	62	41	66.12	12	19.35	14	14.49	0	0
9	62	45	72.58	7	11.29	10	16.12	0	0
10	62	45	72.58	5	8.05	12	19.35	0	0



STUDENTS OVERALL EVALUATION OF THE PROGRAMME AND TEACHING

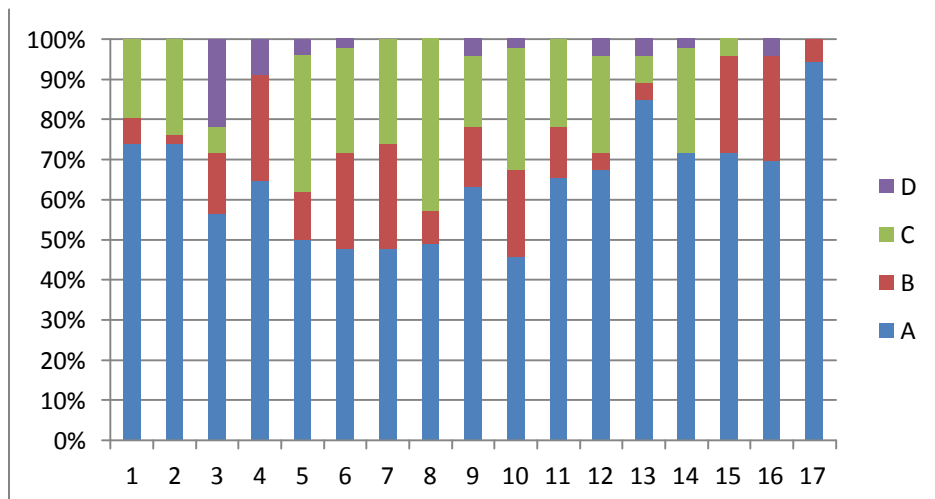
QUESTIONNAIRE NO . 03

Academic Year :2017-18

Name of Teacher : Dr. Surve R.N.

Class :-T.Y.B.

Que. No.	Total Responses	Answer option							
		A		B		C		D	
		Number	%	Number	%	Number	%	Number	%
1	46	34	73.91	03	6.52	9	19.56	0	0
2	46	34	73.91	1	2.17	11	23.91	0	0
3	46	26	56.52	07	15.21	3	6.52		21.75
4	46	22	47.82	09	19.56	0	0	03	6.52
5	46	25	54.34	6	13.04	17	36.95	02	4.34
6	46	22	47.82	11	23.91	12	26.08	01	2.17
7	46	22	47.82	12	26.08	12	26.08	0	0
8	46	24	52.17	4	8.69	21	45.64	0	0
9	46	29	63.04	7	15.21	8	17.39	02	4.34
10	46	21	45.65	10	21.73	14	30.43	01	2.17
11	46	30	65.21	05	13.04	10	21.73	0	0
12	46	31	67.39	2	4.34	11	23.91	02	4.34
13	46	39	84.78	2	4.34	3	6.52	02	4.34
14	46	33	71.73	0	0	12	26.08	01	2.17
15	46	33	71.73	0	0	02	4.34	0	0
16	46	32	69.56	12	26.08	0	0	02	4.34
17	46	33	71.73	2	4.34	0	0	23.93	0



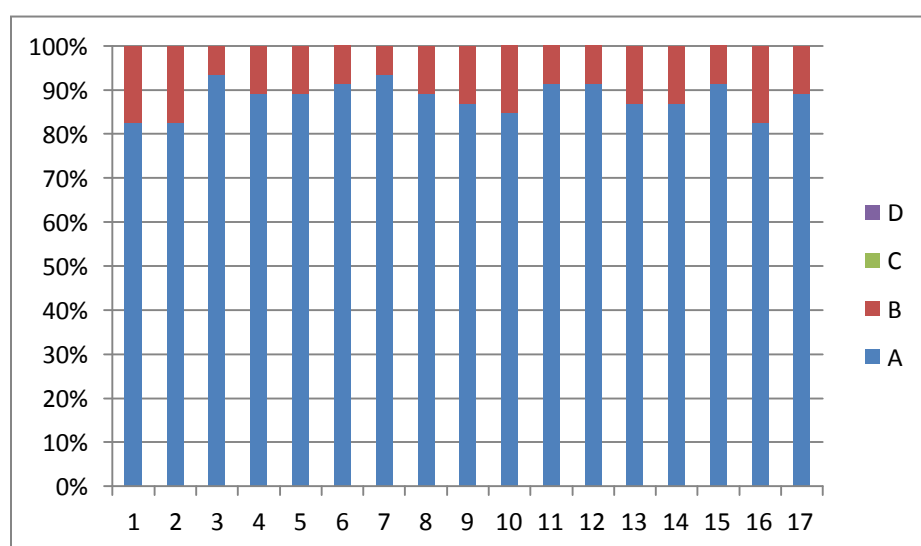
STUDENTS OVERALL EVALUATION OF THE PROGRAMME AND TEACHING

QUESTIONNAIRE NO . 03

Academic Year :2017-18

Name of Teacher Dr. Bhosale B.S

Que. No.	Total Responses	Answer option							
		A		B		C		D	
		Number	%	Number	%	Number	%	Number	%
1	46	38	82.60	8	17.39	0	0	0	0
2	46	38	82.60	8	17.39	0	0	0	0
3	46	43	93.47	3	6.52	0	0	0	0
4	46	41	89.13	5	10.86	0	0	0	0
5	46	41	89.13	5	10.86	0	0	0	0
6	46	42	91.30	4	8.69	0	0	0	0
7	46	43	93.47	3	6.52	0	0	0	0
8	46	41	89.13	5	10.86	0	0	0	0
9	46	40	86.95	6	13.04	0	0	0	0
10	46	39	84.78	7	15.21	0	0	0	0
11	46	42	91.30	4	8.69	0	0	0	0
12	46	42	91.30	4	8.69	0	0	0	0
13	46	40	86.95	6	13.04	0	0	0	0
14	46	40	86.95	6	13.04	0	0	0	0
15	46	42	91.30	4	8.69	0	0	0	0
16	46	38	82.60	8	17.39	0	0	0	0
17	46	41	89.13	5	10.86	0	0	0	0
16	46	38	82.60	8	17.39	0	0	0	0
17	46	41	89.13	5	10.86	0	0	0	0



STUDENTS OVERALL EVALUATION OF THE PROGRAMME AND TEACHING

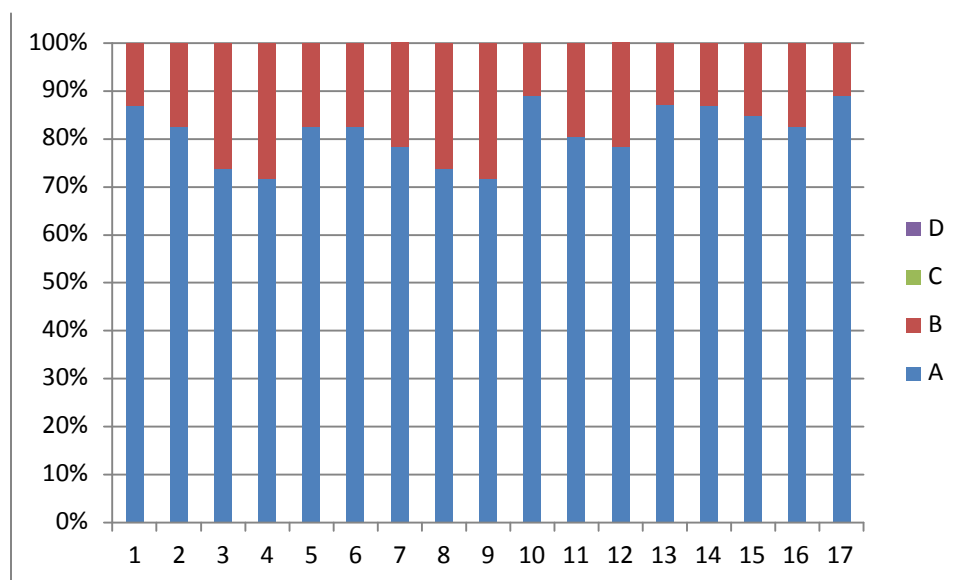
QUESTIONNAIRE NO . 03

Academic Year :2017-18

Name of Teacher : Dr.Manohar J.B.

Class :- T.Y.B.Sc

Que. No.	Total Responses	Answer option							
		A		B		C		D	
		Number	%	Number	%	Number	%	Number	%
1	46	40	86.95	6	13.04	0	0	0	0
2	46	38	82.60	8	17.39	0	0	0	0
3	46	34	73.91	12	26.08	0	0	0	0
4	46	33	71.73	13	28.26	0	0	0	0
5	46	38	82.60	8	17.39	0	0	0	0
6	46	38	82.60	8	17.39	0	0	0	0
7	46	36	78.26	10	21.73	0	0	0	0
8	46	34	73.91	12	26.08	0	0	0	0
9	46	33	71.73	13	28.26	0	0	0	0
10	46	31	89.13	5	10.86	0	0	0	0
11	46	37	80.43	9	19.56	0	0	0	0
12	46	36	78.26	10	21.73	0	0	0	0
13	46	34	89.13	6	13.04	0	0	0	0
14	46	40	86.95	6	13.04	0	0	0	0
15	46	39	84.78	7	15.21	0	0	0	0
16	46	38	82.60	8	17.39	0	0	0	0
17	46	41	89.13	5	10.86	0	0	0	0



STUDENTS OVERALL EVALUATION OF THE PROGRAMME AND TEACHING

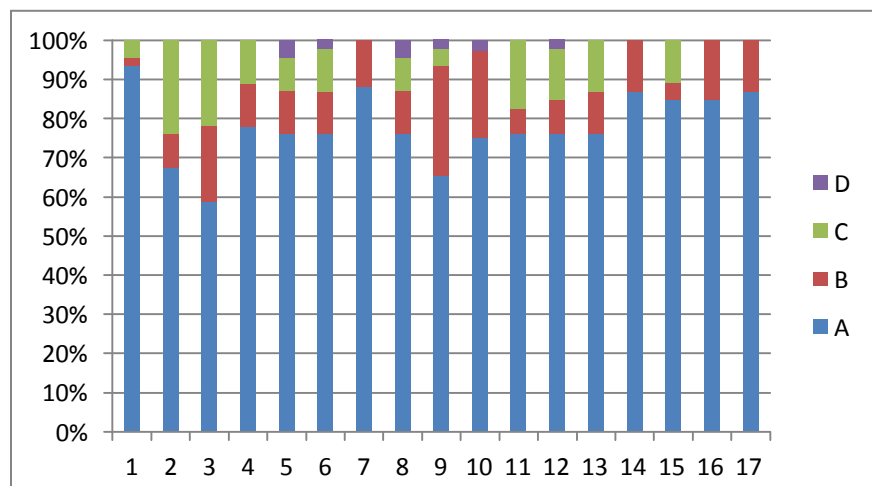
QUESTIONNAIRE NO . 03

Academic Year :2017-18

Name of Teacher : Dr. Bhise C.D.

Class :- T.Y.B.Sc

Que. No.	Total Responses	Answer option							
		A		B		C		D	
		Number	%	Number	%	Number	%	Number	%
1	46	43	93.47	1	2.17	2	4.34	0	0
2	46	31	67.39	4	8.69	11	23.91	0	0
3	46	27	58.69	9	19.56	10	21.73	0	0
4	46	35	76.08	5	10.86	5	10.86	0	0
5	46	35	76.08	5	10.86	4	8.69	2	4.34
6	46	35	76.08	5	10.86	5	10.86	1	2.17
7	46	37	80.43	5	10.86	0	0	0	0
8	46	35	76.08	5	10.86	4	8.69	2	4.34
9	46	30	65.21	13	28.26	2	4.34	1	2.17
10	46	30	65.21	9	19.56	0	0	1	2.17
11	46	35	76.08	3	6.52	8	17.39	0	0
12	46	35	76.08	4	8.69	6	13.04	1	2.17
13	46	35	76.08	5	10.86	6	13.04	0	0
14	46	40	86.95	6	13.04	0	0	0	0
15	46	39	84.78	2	4.34	5	10.86	0	0
16	46	39	84.78	7	15.21	0	0	0	0
17	46	40	86.95	6	13.04	0	0	0	0



STUDENTS OVERALL EVALUATION OF THE PROGRAMME AND TEACHING

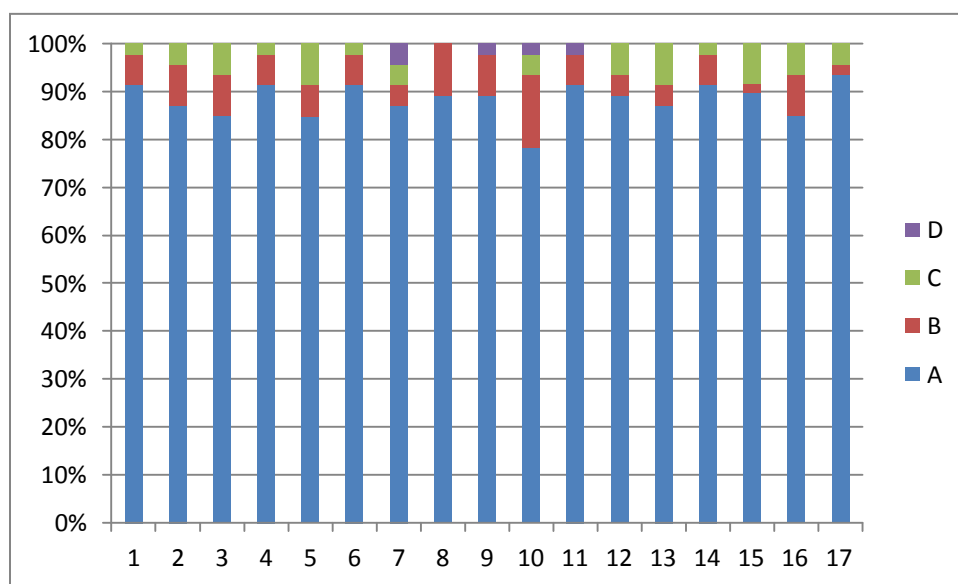
QUESTIONNAIRE NO . 03

Academic Year :2017-18

Name of Teacher : Prof.Ghadge A.B

Class :- T.Y.B.Sc

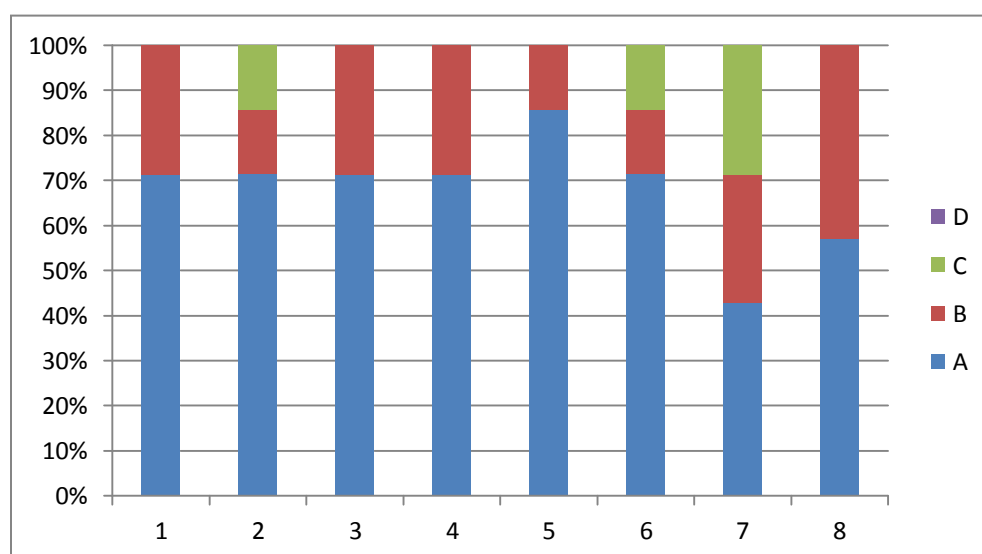
Que. No.	Total Responses	Answer option							
		A		B		C		D	
		Number	%	Number	%	Number	%	Number	%
1	46	42	91.30	3	6.52	1	2.17	0	0
2	46	40	86.95	4	8.69	2	4.34	0	0
3	46	39	84.78	4	8.69	0	6.53	0	0
4	46	42	91.30	3	6.52	1	2.17	0	0
5	46	39	84.78	3	6.52	4	8.69	0	0
6	46	42	91.30	3	6.52	1	2.17	0	0
7	46	40	86.95	2	4.34	2	4.34	2	4.34
8	46	41	89.13	5	10.86	0	0	0	0
9	46	41	89.13	4	8.69	0	0	1	2.17
10	46	36	78.26	7	15.21	2	4.34	1	2.17
11	46	42	91.30	3	6.52	0	0	1	2.17
12	46	41	89.13	2	4.34	3	6.52	0	0
13	46	40	86.95	2	4.34	4	8.69	0	0
14	46	42	91.30	3	6.52	1	2.17	0	0
15	46	43	93.47	1	2.17	4	8.69	0	0
16	46	39	84.78	4	8.69	3	6.52	0	0
17	46	43	93.47	1	2.17	2	4.34	0	0



ANALYSIS OF FEEDBACK FROM TEACHER

Academic Year : 2017-18

Que. No.	Total Responses	Answer option							
		A		B		C		D	
		Number	%	Number	%	Number	%	Number	%
1	07	05	71.42	02	28.57	0	0	0	0
2	07	05	71.42	01	14.28	01	14.28	0	0
3	07	05	71.42	02	28.57	0	0	0	0
4	07	05	71.42	02	28.57	0	0	0	0
5	07	06	85.71	01	14.28	0	0	0	0
6	07	05	71.42	01	14.28	01	14.28	0	0
7	07	03	42.85	02	28.57	02	28.57	0	0
8	07	04	57.14	03	42.85	0	0	0	0



Action Taken Report

Department of Food Science and Nutrition

Sr.No	Activity	Month/Date	Topic	Remark
1.	Orientation	19 th July 2017	Food Science & Nutrition Career opportunities	First year students
2.	Breastfeeding promotion week • Workshop for pregnant & lactating woman Lecture Exhibition • Competitions Video making	1 st -7 th Aug 2017 1 st Aug 2017 7 th Aug 2017	- Importance of Breastfeeding and weaning foods Diet for pregnant & lactating woman Posters & charts Breastfeeding	Visit to Rural Hospital Akluj College level
3.	Nutrition week • Competitions • Recipe	1 st -7 th Sept 2017 7 th Sept 2017	Nutritious snacks	College level
4.	Seminar	7 th Feb 2018	Use of Excel for Research	T.Y Students
5.	Workshop • Demonstration	9 th Feb 2018	Salad making	Second year students
6.	Food stall	26 th Feb 2018	Khana Khajana	All students of college
7.	Distribution of Nutritious recipe	8 th March 2018	Fruit salad prepared and distributed	Students of Vijay Vastigruh Akluj

Sr.No	Activity	Month/Date	Topic	Remark
1.	Lecture	25 th Aug 2017	Stress Management	5-10 std students of Maharshi Prashala Yashwantnagar
2.	Seminar	3 rd Feb 2018	Revised Accreditation & Assessment Process of NAAC	All Staff of College

Human Development Department

Sr. No	Activity	Month/Date	Topic	No. of Participant	Remark
1	Orientation	19.07.2017	Introduction to F.Y.	About 75 F.Y. students	Information about departmental staff, activities, scope etc.
2.	Parent Education Program	25.07.2017	“Parent-child interaction and Responsible Parenting	About 500 students and parents	Krishanand Vidyalaya Patil wasti

3.	Workshop	10.08.2017	Pre-marital preparations	About 45 S.Y. B.Sc.	Dr. Chhaya Bhise
4.	Guest Lecture	19.09.2017	'Essentials for successful Entrepreneur'.	40 T.Y. B.Sc.	Dr. Bhise C. D.
5.	Workshop	22.09.2017	'Stress Management'	40 T.Y. B.Sc.	Dr. Bhise C. D.
6.	Visit	22.09.2017	Preprimary Educational setup and activities	B.Sc. F.Y. Students-75	S. M. V. Pre-Primary section
7.	Hon. Sahakar maharshi Shankararao Mohite Patil 100th Birth Anniversary Celebration: <ul style="list-style-type: none"> ▣ Participation in Dnyanjyot Feri ▣ Participation in Gaurav Bhartiya Lok-Kalecha ▣ Visit to Sayajiraje Water Park ▣ Inauguration of Smt. 	11.01.2018 14.01.2018 07.01.2018	Hon. Sahakar maharshi Shankararao Mohite Patil 100 th Birth Anniversary	Worked in different committees	Shikshan Prasarak mandal
8.	Admission campaign	December	Admission of F.Y. 2018-19		PPT presentations in Chandrashekhar Agashe Jr. collage Sripur, Karmaveer Bhaurao Vidyalaya Bargaon, Maharshi Prashala and Jr. College Yashwantnagar.
9.	Exhibition	01.02.2018	Low cost and educational / teaching material	S.Y. and T.Y. students	Sadashivrao Mane preprimary School : 1000parents and teachers were benefited
10.	Visit to Anganwadi centre	01.02.2018	Program under Internship project	T.Y. students	Sujay nagar 14: guidance to children
11.	Workshop	5&6.02.2018	Importanc of budgeting	T.Y. students	Dr.Bhise C.D.

12.	Baal Hakka Jagruti a. Poster making Competition b. Group Discussion c. Guiding Lecture d. Essay Competition	12.02.18 21.02.18 22.02.18	Child's Rights: neglected issue Childs' rights : Prs and Cones Child Rights: our responsibility Child's Rights : Who's responsibility	All students	A project by Dr. Bhise C.D. with T.Y. students
13.	Guest Lecture	10.03.2018	Entrepreneurship development	T.Y. students	Prof. Bagwan: Maharshi prashala & junior college
14.	Mahila kishori melawa: Lecture	08.03.2018	Changing role of women	70 women and AWW	Bhosale wasti Anganwadi centre : Dr. Bhise C.D.
15.	Poster Exhibition	08.03.2018	Issues related to women	T.Y. students	International women's day
16.	Self-Help group Guiding Lecture	08.03.2018	Challenges in front of rural women in 21 st century	Rajanigandha SHG : about 30 women	Dr. Bhise C.D.
17.	Lecture	11.04.2018	Aahar va Aarogya	10 th std students : about 50 students	Aklai Vidyalaya Akluj
18.	Guiding Lecture : Faltan	12.04.2018	Health status of women and care	More than 120 women	Nagarparishad Faltan

Department of Family Resource Management

Sr.No	Activity	Month/Date	Topic	Remark
1.	Orientation	19 th July 2017	Family Resource Management courses & Career opportunities	First year students
2.	Workshop		Flower arrangement	All students
3.	Lecture	10 th March 2018	Entrepreneurship development	Third year students

Department of Extension Education

Sr. No	Activities	Date	Class
01.	Orientation to Extension Education	19/07/2017	F.Y. B.Sc.

Department of Textile Science and Apparel Design

Sr. No.	Activities	Date	Class
01.	Orientation to Textile& Clothing	01/07/2017	F.Y. B.Sc.
02.	Workshop on Eco friendly dyes	15/07/2017	T.Y. B.Sc.
03.	Exhibition cum sale	16/10/ 2017	S.Y. B.Sc.
04.	Fabric Painting Competition	10 /09/2017	S.Y. B.Sc.
05.	Demonstration of Machine embroidery	09 December 2017	S.Y. and T.Y. B.Sc.
06.	Fashion Show	23 February 2018	S.Y. B.Sc.

DEPARTMENT OF SCIENCE

Month	Activity	Details
July, 2017	Orientation to Science Department :	Orientation program was conducted for first year students in the first week of July. Students were introduced to the laboratory and subjects to be learned by them. Students visited the laboratory and interacted with the faculty.
August 2017	"Best Out Of Waste" Activity	The activity was conducted for First Year students in which students crafted and created the best articles using the waste materials in their house. Environmental awareness was the sole purpose behind the activity. The exhibition of the articles was organized for all students in the campus.
August 2017	Blood Group Checking Camp	Newly admitted students of First Year were checked for the Blood Groups and they were made aware of the facts regarding significance of blood groups, blood donation and blood transfusion.
Feb 2018	SCIENCE DAY CELEBRATIONS	Guidance and speeches Poetry recitation

Department of Library

Sr. No.	Activities	Date	Class
01.	Orientation to Library	01/07/2017	F.Y. B.Sc.
02.	Librarian's Day	05/09/2017	All Classes
03.	Wachan Prerana Divas	15/10/2017	All Classes
04.	Lecture on Career guidance (Competitive Exam)	25/01/2018	All Classes

Department of Computer

Sr. No.	Activities	Date	Class
1	Orientation to Introduction to Computer	20/06/2017	F.Y. B.Sc.
2	SNDT website Training under computer department	15/07/2017	F.Y. B.Sc.
3	Essay Writing	10/08/2017	F.Y. B.Sc.
4	Presentation on Operating System	09/11/2017	F.Y.,S.Y B.Sc.
5	Presentation on Introduction to Virus &Antivirus	16/12/2017	F.Y. B.Sc.
6	Activity on Android mobile and App's	10/01/2018	F.Y. S.Y.B.Sc.
7	Introduction to Internet.	16/02/2018	F.Y. ,S.Y.B.Sc.
8	Introduction to email	16/02/2018	F.Y. ,S.Y.B.Sc.
9	Orientation on Ppt How to make effective PPT	08/02/2018	T.Y. B.Sc.
10	Workshop on how to do Online Transactions	10/03/2018	S.Y. B.Sc

Cultural Department

Sr.No	Date	Programme
1	28 June	Death Anniversary of Smt. Ratnaprabhadevi Mohite Patil
2	25 July	Welcome party
3	25 July	Birth Anniversary of Smt. Ratnaprabhadevi Mohite Patil
4	15 August	Independence Day
5	9 & 10 September	Yuva Mohotsav
6	6 September	Teacher day
7	11 November	Savidhan Din
8	03January	Women's liberation Day
9	06 January	Rangoli Workshop
10	08 January	Dance Workshop
11	17 December	Pratap Krida Mandal Competitions
12	14 January	Participation in Gaurav Bhartiya Lok-Kalecha
13	14 January	Birth Anniversary of Shankarrao Mohite Patil
14	26 January	Republic Day
15	11 February	Death Anniversary of Shankarrao Mohite Patil
16	26 February	Ratnai Mohotsav
17	27 February	Matrubhasha Din
18	8 March	World Women's Day
19	24 March	Social Media Mahamitra
20	26 March	Farewell-Ceremony

NSS DEPARTMENT

Sr.No.	Activities	Date	Class
01.	Celebration of International Yoga Divas	21/06/2017	All Classes
02.	Anti Drug Day	26/06/2017	All Classes
03.	Tree plantation	06/07/2017	NSS volunteers
04.	Enrollment of NSS Volunteers	27/07/2017	F.Y. & S.Y.
05.	Orientation to NSS volunteers	28/07/2017	F.Y. & S.Y.
06.	Campus Cleanliness	29/07/2017	F.Y. & S.Y.
07.	Swacchhata Pakhawada	15/6/2017 to 30/6/2017	
08.	Quit India Movement	09/8/2017	
09.	YIN Programme	11/8/2017	
10.	Presentation on Swacchh Bharat	23/08/2017	All students
11.	Participation in speech competition	28/08/2017	
12.	Lecture on Personality development	29/08/2017	
13.	Mahatma Gandhi Jayanti celebration	02/10/2017	All Students
14.	Shramdan	02/10/2017	NSS volunteers
15.	Wild life week celebration	08/10/2017	All Students
16.	Participation in speech competition		
17.	Blood donation activity	08/01/2018	NSS volunteers
18.	Participation in program of 14 th January	03/01/2017	All Students
19.	Shramdan	09/01/2017	NSS volunteers
20.	Participation in Republic Day	26/01/2017	NSS volunteers
21.	Science Day Celebration	28/02/2018	All Classes

Department of Sports

Sr. No.	Activities	Date	Class
01.	Orientation to Sports Department	01/07/2017	F.Y. B.Sc.
02.	State level Participation Volleyball Cricket Kho-Kho Athletics		Selected students
03.	National Level Participation Cross Country Base ball Soft ball		Selected students

Annexure I



**SHIKSHAN PRASARK MANDAL'S
SMT. RATNAPRABHADEVI MOHITE-PATIL COLLEGE OF HOME SCIENCE FOR WOMEN, AKLUJ,
TAL.MALSHIRAS, DIST: SOLAPUR
ACADEMIC CALENDAR: 2017-2018**

DAYS	JUNE	JULY	AUGUST	SEPTEMBER	OCTOBER	NOVEMBER	DECEMBER	JANUARY	FEBRUARY	MARCH	APRIL	MAY	DAYS
SUN					1						1		SUN
MON					2NSS : GANDHI JAYANTI LALBAHADUR SHASHTRI JAYANTI			1			2		MON
TUE			1 FSN:BREAST FEEDING PROMOTION WEEK : WORKSHOP,LECTURES ,DEMOS,EXHIBITION . COMP: VIDEO MAKING		3 SCI: COMP - PHOTOGRAPHY ON WILD LIFE			2			3	1	TUE
WED			2NSS : ORIENTATION BY GUEST		4	1		3SAVITRIBAI PHULE JAYANTI CELEB.			4	2	WED
THU	1		3TS: PRESENTATION ON FABRIC ORNAMENTATION : SY		5	2		4COMP : WORKSHOP ON INTRO. TO COMP. MEMORIES: ALL	1	1	5	3	THU
FRI	2		4NSS : SKIT PRESENTATION IN RURAL HOSPITAL	1 FSN:NUTRITION WEEK: WORKSHOP,LECTURES ,DEMOS,EXHIBITION & SKIT RECPIE COMP.	6COMP : WORKSHOP ON INTRO. TO MS PPT	3	1	5FRM :WORKSHOP ON PREPARING PUBLICITY PUBLICITY MATERIAL: TY	2	2COMP : WORKSHOP ON IMP. OF COMP.: ALL	6	4	FRI
SAT	3	1NSS: TREE PLANTATION	5	2	7FRM/HD : VISIT TO COTTAGE IND.: TY	4	2SCI : INTERACTIVE SESSION ON SOFT SKILLS	6	3	3FSN: SEMINAR ON CARRER OPPR. :TY	7	5	SAT
SUN	4	2	6	3	8	5	3	7	4	4	8	6	SUN
MON	5	3	7 CULT: WELCOME PARTY	4SCI : PROJECT ON DOMESTIC CLEANLINESS : FY	9 SPORTS: ORG. OF INTERCOLLEGIATE TOURNAMENTS	6	4 NSS: POSTER COMP.	8 FSN : COMMUNITY NUTRITION PROGRAM-RECPIE PREPARATION AND DISTRIBUTIOB TO SCHOOL CHILDREN, ANTHROPOMETRIC MEASUREMENT	5 SCI : MOCK INTERVIEWS: FY	5 FRM: GUEST LECTURE ON CAREER OPPR. IN EVENT MGT: TY	9	7	MON

DAYS	JUNE	JULY	AUGUST	SEPTEMBER	OCTOBER	NOVEMBER	DECEMBER	JANUARY	FEBRUARY	MARCH	APRIL	MAY	DAYS
TUE	6	4SPORTS: GUEST LECTURE – PHYSICAL FITNESS	8	5CULT:TEACHER'S DAY CELEBERATION		7	5	9	6	6	10 EXAM:TERM END EXAMS	8	TUE
WED	7	5COMP : ORIENTATION TO COMP	9	6TS : COMP ON FABRIC PAINTING : ALL	11NSS : PRESENTATION ON WATER CONSERVATION	8	6TS :PRES. ION ON RECENT TRENDS IN EMBRIODERY:S. Y.	10 TS : PRES. ON VARIOUS ACCESSORIES USED WITH COSTUME: FY	7	7	11	9	WED
THU	8	6	10NSS :HAND EMBROIDERY TRAINNING FOR SHG COMP: ORIENTATION TO FUNDAMENTALS TO COMPUTER	7FRM : GUEST LECTURE ON CONSUMER AWARENESS : SY	12 TERM END EXAMS	9	7NSS : PROG. ON ROAD SAFETY	11	8	8NSS/CUL:INTERNATIONAL WOMEN'S DAY: EXHIBITION CUM SALE	12	10	THU
FRI	9	7 ORIENTATION TO F.Y.	11 SCI:WORKSHOP ON USE OF MULTIMEDIA IN STUDIES	8 HD :VISIT TO PREPRIMARY SCHOOL : FY	13	10	8	12NSS: YOUTH DAY CELEBERATION: LIT PROG.	9TS.: FASHION SHOW	9	13	11	FRI
SAT	10	8 SCI:MEDICAL CHECK-UP FOR F.Y.	12LIB: LIB. DAY CELEBERATION	9NSS : WORKSHOP ON PAPER BAG MAKING FROM WASTE PAPER	14	11 SPORT:ORG. OF ATHELETICS UNI.COACHING CAMP FOR ASHWAMEDH	9	13 SPORTS:INTERCLASS COMP	10	10	14	12	SAT
SUN	11	9	13	10	15	12	10	14SAHAKAR MAHARSHI SHANKARRAO MOHITEPATIL BIRTH ANNI.	11DEATH ANNIVERSERY OF SAHAKAR MAHARSHI SHANKARRAO MOHITEPATIL	11	15	13	SUN
MON	12	10 TS: WORKSHOP ON NATURAL DYEING :TY	14EXT : CO-OPERATIVE LEARNING SKILLS : ALL	11 SCI : Hb ESTIMATION CAMP : SEMINAR : ALL	16	13	11HD : WORKSHOP ON GAME PLANNING & PREPARING TEACHING AIDSFOR VARIOUS AGE GRPS. : SY	15 NSS :GUEST LECTURE ON WOMEN EMPOWERMENT	12	12	16	14	MON
TUE	13 COMMENCEMENT OF SEM I,III &V	11 SC:WORLD POPULATION DAY : GD : FY NSS: POSTER COMP	15INDEPENDANCE DAY	12 EXT : WORKSHOP ON PRESENTATION SKILL : FY	17	14HD :BALDIN-POSTER EXHIBITION, SKIT PRES. LECTURE AND DONATIONS :CELEBERATIONS WITH DIFF. SCHOOLS.:ALL	12	16	13	13	17	15	TUE

DAYS	JUNE	JULY	AUGUST	SEPTEMBER	OCTOBER	NOVEMBER	DECEMBER	JANUARY	FEBRUARY	MARCH	APRIL	MAY	DAYS
WED	14 IQAC SWOC PROSPECTUS ADMISSION ACADEMIC CALENDAR TEACHERS DIARY AND TIME TABLE COLLEGE INTERNAL AND UNIVERSITY EXAM EXAM: DECLARATION OF RESULTS	12HD: WORKSHOP ON PREMARITAL COUNSELLING : TY	16	13SCI : VISIT TO WATER PURIFICATION PLANT AT VIZORI : FY	18	15NSS : GUEST LECTURE ON STRESS MGT.	13	17	14	14FRM : GRAHAK DIN CELEB. :ALL	18	16	WED
THU	15 STAFF SECRETARY AND STAFF ACADEMY UGC PROPOSAL AND CIRCULAR UNIVERSITY AFFILIATION B.C.CELL& STANDING STUDENT'S COUNCIL COMPETITIVE EXAM, PLACEMENT CELL AND ENTREPRENEURSHIP DEVELOPMENT	13	17	14 NSS : GUEST LECTURE ON WOMENS ISSUES	19	16 COMP : WORKSHOP ON INT. TO INTERNET: FY	14SCI : A/V SHOWS ON SOFT SKILLS	18 HD:COMMUNITY REACH PROG- MATA MAHAVIDYLAYCHY DARI : PROG. FOR COLLEGE STUDENTS MOTHERS-SEMINAR, SKIT AND EXHIBITION	15	15	19	17	THU
FRI	16 PUBLICITY STUDENT WALLPAPER AND EXTENSION ACTIVITY RESEARCH ANTI RAGGING COLLEGE MAGAZINE PARENT AND ALUMNAE ASSOCIATION	14NSS: ORIENTATION BY PO	18	15COMP : WORKSHOP ON INTRODUCTION TO MS OFFICE	20	17TS : VISIT TO GARMENT UNIT : FY	15COMP : WORKSHOP ON INTR. TO COMP. LANG.: ALL	19	16SCI: DEMO- HERBAL PREPARATIONS FOR GOOD HEALTH	16	20	18	FRI
SAT	17 TEACHING AIDS DISCIPLINE CAMPUS MAINTENANCE LADIES ROOM ADMINISTRATION PLANNING HEALTH CENTER	15	19 TS: WORKSHOP ON FABRIC PAINTING STYLE : FY	16	21	18	16 FSN : WORKSHOP AND DEMO. ON PRESERVED PRODUCTS: SY	20	17HD: GUEST LECTURE ON COUNSELLING :TY	17	21	19	SAT
SUN	18	16	20	17	22	19	17	21	18	18	22	20	SUN
MON	19 FEED BACK COMPUTER EDUCATION AND WEBSITE UP GRADATION REMEDIAL COACHING STOCK MAINTENANCE LIBRARY ADVISORY Y.C.M.O.U. STUDY CENTRE	17	21 CULT : YOUTH FESTIVAL	18	23	20	1817-22-NSS SPE.CAMP	22	19SPOTRS : INTERCLASS COMP:ALL	19	23	21	MON
TUE	20 GYMKHANA AND SPORTS COUNSELING CELL SEXUAL HARASSMENT PREVENTION CULTURAL N.S.S. ADVISORY AND WORKING HOSTEL	18	22	19 HD/FRM : WORKSHOP ON STRESS MANAGEMENT : TY	24	21	19 FSN : STUDY TOUR- FOOD INDUST. VISIT	23	20	20 CULT :FAREWELL CEREMONEY	24	22	TUE
WED	21 GRIEVANCE REDRESSAL	19	23	20TS : DEMO ON	25	22	20	24	21CULT :	21	25	23	WED

DAYS	JUNE	JULY	AUGUST	SEPTEMBER	OCTOBER	NOVEMBER	DECEMBER	JANUARY	FEBRUARY	MARCH	APRIL	MAY	DAYS
	CELL HOME SCIENCE ASSOCIATION NSS: YOGA DAY			VARIOUS SMOKING TECH. : SY					MATRUBHASHA DIN CELEBRATION : ALL				
THU	22	20	24	21	26	23	21EXHIBITION	25	22CULT : RATNAI MAHOTSAV	22	26	24	THU
FRI	23	21 TS: WORKSHOP ON MACHINE EMBROIDARY : SY	25	22HD: COMP :DEBATE ON SAROGACY –IS IT RIGHT? : ALL	27	24	22	26 REPUBLIC DAY	23COMP : WORKSHOP ON WEB BROWSING ;FY&SY	23	27	25	FRI
SAT	24	22	26 HD/FRM : GUEST LECTURE : ESSENTIAL FOR SUCCESSFUL ENTREPRENEUR:TY	23	28	25	23TS : WORKSHOP ON FABRIC RENNOVATION	27	24FSN: FOUNDATION COURSE FOR – NUTRITION: FY	24	28	26	SAT
SUN	25	23	27	24NSS DAY CELEBRATION	29	26CULT : SANVIDHAN DIN CELEBRATION	24	28	25	25	29	27	SUN
MON	26	24EXT : WORKSHOPON COMM.SKILLS : FY	28 NSS : TEMPLE WASTE MANAGEMENT	25 NSS : CLEANLINES PROJECT	30	27FSN : WORKSHOP /DEMO ON SALAD MAKING : SY	25	29	26	26	30	28	MON
TUE	27	25 BIRTH ANNIVERSERY OF SMT. RATNAPRABHADEVI MOHITEPATIL	29 HD : SEMINAR : SCIENTIFIC PARENTING : SY	26	31	28	26	30	27	27		29	TUE
WED	28 DEATH. ANNIVERSARY OF SMT. RATNAPRABHDEVI MOHITE PATIL	26SCI : MARKET SURVEY FOR COSMETICS PRODUCTION	30	27 TS: WORKSHOP ON PRINTING STYLES : TY		29	27	31	28	28		30	WED
THU	29	27	31	28		30	28			29		31	THU
FRI	30	28		29			29			30			FRI
SAT		29		30			30			31			SAT
SUN		30					31						SUN
MON		31											MON
TUE													



SHIKSHAN PRASARK MANDAL'S
SMT. RATNAPRABHADEVI MOHITE-PATIL COLLEGE OF HOME SCIENCE FOR WOMEN, AKLUJ,
TAL.MALSHIRAS, DIST: SOLAPUR
ACADEMIC CALENDAR: 2018-2019



DAYS	JUNE	JULY	AUGUST	SEPTEMBER	OCTOBER	NOVEMBER	DECEMBER	JANUARY	FEBRUARY	MARCH	APRIL	MAY	DAYS
SUN		1											SUN
MON		2			1 SC: WILDLIFE WEEK						1 FAREWELL CEREMONY		MON
TUE		3			2 NSS : GANDHI JAYANTI LALBAHADUR SHASHTRI JAYANTI			1 NSS: FILM SHOW ON UNITY IN DIVERSITY			2		TUE
WED		4 SPORTS:ORIENTA TION AND GUEST LECTURE – PHYSICAL FITNESS	1 TC: WORKSHOP ON PRINTING STYLES		3 SCI:QUIZ, POSTER AND SLOGAN COMPETITIONS ON WILD LIFE AND ENVIRONMENT ISSUES			3 SAVITRIBAI PHULE JAYANTI			3	1	WED
THU		5 NSS: TREE PLANTATION	2 HD : WORKSHOP : PREMARITAL PREPARATIONS		4 COMP: INTRODUCTION TO INTERNET AND FACILITIES	1 NSS: WORKSHOP ON MAKING ARTICLE FROM WASTE		4 TC: HAND EMBROIDARY			4	2	THU
FRI	1	6	3		5	2		5 COMP: PRESENTATION ON COMPUTER MOBILE VIRUSES AND ANTI VIRUSES	1	1	5	3	FRI
SAT	2	7 ORIENTATION TO F.Y.	4 FRM:WORKSHOP ON SKILLS FOR ENT. DEV.	1 FSN:NUTRITION WEEK: WORKSHOP,LECTUR ES ,DEMOS,EXHIBITION & SKIT RECPIE COMP. COMP: MICRONUTRIENT RICH REC.	6 FRM: VISIT TO HOTEL	3	1 SPORTS:SOFT BALL, BASE BALL, CRICKET	6	2 NSS: GUEST LECTURE ON WOMEN EMPOWERMENT	2	6	4	SAT
SUN	3	8	5	2	7	4	2	7	3	3	7	5	SUN
MON	4	9	6	3 TC: PRESENTATION ON VARIOUS PAINTING STYLES OF INDIA	8 SPORTS:KABBADI , WOLLYBALL ATHELETICS, TUG- OF-WAR	5 COMP:PPT ON ANROID MOBILE OS	3	8	4 TC: PPT ON VARIOUS GARMENTS	4 HD: VISIT TO COUNSELING CELL	8	6	MON
TUE	5	10 SCI:GENERAL MEDICAL CHECK- UP FOR F.Y.	7 FSN:BREAST FEEDING PROMOTION WEEK : WORKSHOP,LECT URES ,DEMOS,EXHIBITI ON & SKIT/AWC/PHC	4	9 FSN: WORKSHOP ON HEALTHY DESERTS	6	4 SCI: WORKSHOP ON REPRODUCTIVE HEALTH AND HYGIENE	9	5	5	9	7	TUE

DAYS	JUNE	JULY	AUGUST	SEPTEMBER	OCTOBER	NOVEMBER	DECEMBER	JANUARY	FEBRUARY	MARCH	APRIL	MAY	DAYS
WEB	6	1	8 SC: VISIT TO WATER PURIFICATION PLANT	5CULT:TEACHER'S DAY CELEBERATION	10	7	5TC: GARMENT MAKING WORKSHOP	10	6	6 SCIENCE: SURVEY OF LABORATORY TECHNIQUES	10	8	WEB
THU	7	12FSN: FOUNDATION COURSE FOR F.Y.	9FRM: WORKSHOP ON BOUQUET MAKING	6HD:SEMINAR ON WOMENS STATUS AND EMPOWERMENT	11FRM: VISIT TO LOCAL RESTAURANT	8	6	11	7	7	11	9	THU
FRI	8	13	10NSS :ORIENTATION BY GUEST	7 SCI:DISTRIBUTION OF PROJECTS TO F.Y. STUDENTS	12	9	7	12NSS: YOUTH DAY CELEBERATION/RAJMATA JIJAU	8	8CUL:INTERN ATIONAL WOMEN'S DAY: EXHIBITION CUM SALE	12	10	FRI
SAT	9	14	11COMP: INT. TO IT	8NSS: PRES. ON LITERACY	13TC: DEMONSTRATION ON RENNOVATION OF GARMENTS	10SPORTS: ATHELETICS, ROAD RACE AND SOFT BALL	8	13 SPORTS:INTERCLASS COMP	9	9	13	11	SAT
SUN	10	15	12	9	14	11	9	14SAHAKAR MAHARSHI SHANKARRAO MOHITEPATIL BIRTH ANNI.	10	10	14	12	SUN
MON	11	16TC: DEMONSTRATION ON REGIONAL EMBRIODARY	13LIB :VISIT TO SADUBHAU SARVAJANEK WACHANALAYA	10TC: FABRIC PAINTING COMPETITION	15LIB : WACHAN PRERNA DIN CELEB. GUEST LECTURE	12	10	15	11DEATH ANNIVERSERY OF SAHAKAR MAHARSHI SHANKARRAO MOHITEPATIL	11	15	13	MON
TUE	12 COMMENCEMENT OF SEM I,III & V	17	14	11 TS: TRAINING ON MAKING ARTICLES USING PRINTING TECHNIQUE	16	13	11	16	12TC:FASHION EMBRIODARED	12	16	14	TUE
WEB	13	18	15INDEPONDANCE DAY	12COMP:PRESENTAT ION ON HOW TO MAKE EFFECTIVE PPT	17 TERM END EXAMS	14	12 NSS:SPECIAL CAMP	17	13 SPORTS: INTERCLASS COMP.	13TC: EXHIBITION	17	15	WEB
THU	14 IQAC SWOC PROSPECTUS ADMISSION ACADEMIC CALENDAR TEACHERS DIARY AND TIME TABLE COLLEGE INTERNAL AND UNIVERSITY EXAM EXAM: DECLARATION OF RESULTS	19CULT. GURUPURNIMA CELEBERATION	16NSS:TEMPLE WASTE MANAGEMENT	13	18	15	13	18 HD: WORKSHOP ON TEACHING AIDS AND GAMES PLANNING FOR CHILDREN	14	14	18BIRTH ANNIVER SERY OF MAHARS HI KARVE	16	THU
FRI	15 STAFF SECRETARY AND STAFF ACADEMY UGC PROPOSAL AND CIRCULAR UNIVERSITY AFFILIATION B.C.CELL& STANDING STUDENT'S COUNCIL COMPETITIVE EXAM, PLACEMENT CELL AND ENTREPRENEURSHIP DEVELOPMENT	20 SCIENCE : COLLECTION OF MEDICINAL PLANTS (F.Y.)	17HD:SEMINAR ON SCIENTIFIC PARENTING	14 SPORTS : KHO-KHO KABADDI,WOLYBALL ,ATHELETICS(RUNNING, JUMPING AND THROWING)	19	16	14	19	15 RATNAI MAHOTSAV	15 FRM: CONSUMER AWARENESS PROGRAM	19	17	FRI
SAT	16 PUBLICITY STUDENT WALLPAPER AND EXTENSION ACTIVITY RESEARCH ANTI RAGGING COLLEGE MAGAZINE PARENT AND ALUMNAE ASSOCIATION	21	18	15	20	17	15	20FSN: COMMUNITY NUTRITION PROG.	16FRM: WORKSHOP ON BUDGETING	16	20	18	SAT

DAYS	JUNE	JULY	AUGUST	SEPTEMBER	OCTOBER	NOVEMBER	DECEMBER	JANUARY	FEBRUARY	MARCH	APRIL	MAY	DAYS
SUN	17	22	19	16	21	18	16	21	17	17	21	19	SUN
MON	18 FEED BACK COMPUTER EDUCATION AND WEBSITE UP GRADATION REMEDIAL COACHING STOCK MAINTENANCE LIBRARY ADVISORY Y.C.M.O.U. STUDY CENTRE	23 COMP: INT. OF ONLINE COLLEGE WEBSITE	20SPORTS : TABLE TENNIS ,YOGA PRANAYAM AND KRIYAS , KHO-KHO	17	22	19	17COMP:PRESENTA TION OF MOBILE APPS AND ITS USES	22	18COMP: WORKSHOP ON PHOTO MAKER	18COMP:PPT ON CREATING DIGITAL ADVERTISME NTS	22	20	MON
TUE	19	24	21	18	23	20LIB:SEMINAR ON CAREERS IN COMPETATIVE EXAMS	18COLLAGE ADMISSION CAMPAGIN	23HD: PARENT EDUCATION PROGRAM :EXHIBITION LECTURE	19	19	23	21	TUE
WEB	20 GYMKHANA AND SPORTS COUNSELING CELL SEXUAL HARASSMENT PREVENTION CULTURAL N.S.S. ADVISORY AND WORKING HOSTEL	25WELCOME PARTY BIRTH ANNIVERSERY OF SMT. RATNAPRABHADE VI MOHITEPATIL	22	19 SCI:HB ESTIMATION CAMP & SEMINAR ON SIMPLE RECIPES TO INCREASE HB LEVELS IN BLOOD	24	21	19	24	20	20	24	22	WEB
THU	21 GRIEVANCE REDRESSAL CELL HOME SCIENCE ASSOCIATION NSS:INTERNATIONAL YOGA DAY	26	23 YOUTH FESTIVAL	20	25	22	20	25	21FN: GUEST LECTURE ON USE OF NUTRITIONAL ASSESSMENT TECHNIQUE IN ICDS	21	25	23	THU
FRI	22 TEACHING AIDS DISCIPLINE CAMPUS MAINTENANCE LADIES ROOM ADMINISTRATION PLANNING HEALTH CENTER	27HD: VISIT TO PREPRIMARY SCHOOL	24	21 HD:COMP:POSTER MAKING	26	23	21SPECTRUM:PRO GRAMK FOR PARENTS AND STUDENTS	26 REPUBLIC DAY	22	22	26	24	FRI
SAT	23	28SC:SEMINAR ON SELF ANALYSIS SWOC	25	22FRM:GUEST LECTURE ON PRINCIPALS OF ART	27	24	22SCI: GUEST LECTURE ON GROOMING	27HD: GUEST LECTURE ON COUNSELLING SKILLS	23	23	27	25	SAT
SUN	24	29	26	23	28	25	23	28	24	24	28	26	SUN
MON	25 TC: WORKING ON ECOFRIENDLY DYES	30	27	24NSS DAY CELEBERATION	29NSS: PANEL DISCUSSION ON SOCIAL ISSUES	26	24EXT : EXHIBITION	29	25	25	29	27	MON
TUE	26	31	28	25FRM: COMP:BOQUET MAKING	30	27	25	30ALL:SEMINAR ON CAREER OPORTUNITIES IN HOME SCIENCE	26	26	30	28	TUE
WEB	27		29	26	31HD:GUEST LECT.ON LEGAL PROVISION FOR WOMEN	28	26	31	27	27		29	WEB
THU	28 DEATH. ANNIVERSARY OF SMT. RATNAPRABHDEVI MOHITE PATIL		30 LIB : LETTER AND APPLICATION WRITING	27		29SCI:WORKSHOP ON TIME STRESS AND ENERGY MGT	27EXAM: DECLARATION OF FY RESULTS		28 SCI:SCIENCE DAY CELEBRATIONS	28		30	THU
FRI	29TC: PPT ON FABRIC ORNAMENTATION S.Y.		31	28ALL :MATA MAHAVIDYALAYACH YA DARI		30	28			29		31	FRI
SAT	30			29			29			30			SAT
SUN				30			30			31			SUN
MON							31						MON