

*Shikshan Prasark Mandal's*

*Smt. Ratnaprabhadevi Mohite Patil College of Home  
Science for Women, Akluj, Tal- Malshiras, Dist- Solapur.  
413101 ( Maharashtra)*

**Submission of  
Internal Annual Quality Assurance Report  
(AQAR)  
(Revised in January 2014)**

**To**



**राष्ट्रीय मूल्यांकन एवं प्रत्यायन परिषद्**

विश्वविद्यालय अनुदान आयोग का स्वायत्त संस्थान

**NATIONAL ASSESSMENT AND ACCREDITATION COUNCIL**

*An Autonomous Institution of the University Grants Commission  
P. O. Box. No. 1075, Opp: NLSIU, Nagarbhavi, Bangalore - 560 072 India*

# The Annual Quality Assurance Report (AQAR) of the IQAC

## Part – A

### I. Details of the Institution

1.1 Name of the Institution

1.2 Address Line 1

Address Line 2

City/Town

State

Pin Code

Institution e-mail address

Contact Nos.

Name of the Head of the Institution:

Tel. No. with STD Code:

Mobile:

Name of the IQAC Co-ordinator:

Mobile:

IQAC e-mail address:

1.3 NAAC Track ID

1.4 NAAC Executive Committee No. & Date:

1.5 Website address:

www.srmphomesc.org

Web-link of the AQAR:

--

1.6 Accreditation Details

| Sl. No. | Cycle                 | Grade | CGPA | Year of Accreditation | Validity Period |
|---------|-----------------------|-------|------|-----------------------|-----------------|
| 1       | 1 <sup>st</sup> Cycle | B     | 2.60 | 2012-13               | Jan 4,2018      |

1.7 Date of Establishment of IQAC:

20/06/2012

1.8 AQAR for the year

2015-16

1.9 Details of the previous year's AQAR submitted to NAAC after the latest Assessment and Accreditation by NAAC (*for example AQAR 2010-11 submitted to NAAC on 12-10-2011*)

i. AQAR 2014-15 submitted to NAAC on 07-10-2015

1.10 Institutional Status

University State  Central  Deemed  Private

Affiliated College Yes  No

Constituent College Yes  No

Autonomous college of UGC Yes  No

Regulatory Agency approved Institution Yes  No

(eg. AICTE, BCI, MCI, PCI, NCI)

Type of Institution Co-education  Men  Women

Urban  Rural  Tribal

Financial Status Grant-in-aid  UGC 2(f)  UGC 12B

Grant-in-aid + Self Financing  Totally Self-financing

1.11 Type of Faculty / Programme

Arts  Science  Commerce  Law  PEI (Phys Edu)

TEI (Edu)  Engineering  Health Science  Management

Others (Specify)

Home Science

1.12 Name of the Affiliating University (for the Colleges)

S.N.D.T.Women's University Mumbai

1.13 Special status conferred by Central/ State Government-- UGC/CSIR/DST/DBT/ICMR etc

Autonomy by State/Central Govt. / University

-

University with Potential for Excellence

-

UGC-CPE

-

DST Star Scheme

-

UGC-CE

-

UGC-Special Assistance Programme

-

DST-FIST

-

UGC-Innovative PG programmes

-

Any other (Specify)

-

UGC-COP Programmes

-

## **2. IQAC Composition and Activities**

2.1 No. of Teachers

08

2.2 No. of Administrative / Technical staff

02

2.3 No. of students

02

2.4 No. of Management representatives

01

2.5 No. of Alumni

01

2.6 No. of any other stakeholder and

01

Community representatives

2.7 No. of Employers/ Industrialists

--

2.8 No. of other External Experts

--

2.9 Total No. of members

15

2.10 No. of IQAC meetings held 02

2.11 No. of meetings with various stakeholders:

No.

Faculty

02

Non-Teaching Staff, Students

02

Alumni

-

Others

2.12 Has IQAC received any funding from UGC during the year? Yes

No

If yes, mention the amount

Rs. 2000000/-

2.13 Seminars and Conferences (only quality related)

(i) No. of Seminars/Conferences/ Workshops/Symposia organized by the IQAC

Total Nos.  International  National  State  Institution Level

(ii) Themes

UGC sponsored Seminar on 'Environmental Protection: An interdisciplinary approach for sustainable development'

2.14 Significant Activities and contributions made by IQAC

IQAC Coordinator Attended National conference on Best Practices in teaching learning and evaluation and presented paper

2.15 Plan of Action by IQAC/Outcome

The plan of action chalked out by the IQAC in the beginning of the year towards quality enhancement and the outcome achieved by the end of the year \*

| Plan of Action | Achievements |
|----------------|--------------|
| Annexure I     | Annexure II  |

\* Attach the Academic Calendar of the year as Annexure.

2.15 Whether the AQAR was placed in statutory body Yes  No

Management  Syndicate  Any other body

Provide the details of the action taken

-----

**Part – B**

**Criterion – I**

**I. Curricular Aspects**

1.1 Details about Academic Programmes

| Level of the Programme | Number of existing Programmes | Number of programmes added during the year | Number of self-financing programmes | Number of value added / Career Oriented programmes |
|------------------------|-------------------------------|--------------------------------------------|-------------------------------------|----------------------------------------------------|
| PhD                    | -                             | -                                          | -                                   | -                                                  |
| PG                     | -                             | -                                          | -                                   | -                                                  |
| UG                     | 03                            | -                                          | -                                   | -                                                  |
| PG Diploma             | -                             | -                                          | -                                   | -                                                  |
| Advanced Diploma       | -                             | -                                          | -                                   | -                                                  |
| Diploma                | -                             | -                                          | -                                   | -                                                  |
| Certificate            | 01                            | -                                          | -                                   | 02                                                 |
| Others                 | -                             | -                                          | -                                   | -                                                  |
| <b>Total</b>           | <b>04</b>                     | <b>-</b>                                   | <b>-</b>                            | <b>02</b>                                          |
| Interdisciplinary      | -                             | -                                          | -                                   | -                                                  |
| Innovative             | -                             | -                                          | -                                   | -                                                  |

1.2 (i) Flexibility of the Curriculum: CBCS/Core/Elective option / Open options

(ii) Pattern of programmes:

| Pattern   | Number of programmes |
|-----------|----------------------|
| Semester  | 01                   |
| Trimester | --                   |
| Annual    | 02                   |

1.3 Feedback from stakeholders\* Alumni  Parents  Employers  Students   
(On all aspects)

Mode of feedback : Online  Manual  Co-operating schools (for PEI)

\*Analysis of the feedback in the Annexure-III

1.4 Whether there is any revision/update of regulation or syllabi, if yes, mention their salient aspects.

Yes University restructure syllabi every 5<sup>th</sup> year it's been lastly restructured in 2013-14

1.5 Any new Department/Centre introduced during the year. If yes, give details.

--

## Criterion – II

### 2. Teaching, Learning and Evaluation

2.1 Total No. of permanent faculty

| Total | Asst. Professors | Associate Professors | Professors | Others |
|-------|------------------|----------------------|------------|--------|
| 08    | 06               | --                   | --         | 02     |

2.2 No. of permanent faculty with Ph.D.

04

2.3 No. of Faculty Positions Recruited (R) and Vacant (V) during the year

| Asst. Professors |    | Associate Professors |   | Professors |   | Others |    | Total |    |
|------------------|----|----------------------|---|------------|---|--------|----|-------|----|
| R                | V  | R                    | V | R          | V | R      | V  | R     | V  |
| 06               | 01 | -                    | - | -          | - | 02     | 01 | 08    | 02 |

2.4 No. of Guest and Visiting faculty and Temporary faculty

-      -      02

2.5 Faculty participation in conferences and symposia:

| No. of Faculty   | International level | National level | State level |
|------------------|---------------------|----------------|-------------|
| Attended         | 06                  | 11             | 08          |
| Presented papers | 05                  | 07             | 03          |
| Resource Persons | -                   | -              | 01          |

2.6 Innovative processes adopted by the institution in Teaching and Learning:

Use of ICT, Various Methods Viz Group Discussion, Projects, Assignments, Debate, Survey, Field visits, Presentations

2.7 Total No. of actual teaching days 216  
during this academic year

2.8 Examination/ Evaluation Reforms initiated by the Institution Open Book Examination, Bar Coding, Photocopy, MCQ

2.9 No. of faculty members involved in curriculum restructuring/revision/syllabus development as member of Board of Study/Faculty/Curriculum Development workshop -- -- --

2.10 Average percentage of attendance of students 85%

2.11 Course/Programme wise distribution of pass percentage:

| Title of the Programme | Total no. of students appeared | Division      |     |      |       |            |        |
|------------------------|--------------------------------|---------------|-----|------|-------|------------|--------|
|                        |                                | Distinction % | I % | II % | III % | ATKT/ Fail | Pass % |
| B.Sc (H.Sc) I yr       | 58                             | 23            | 20  | 15   | -     | -          | 100    |
| B.Sc (H.Sc) II yr      | 41                             | 21            | 17  | -    | -     | 03         | 100    |
| B.Sc(H.Sc)III yr       | 36                             | 27            | 09  | -    | -     | -          | 100    |

2.12 How does IQAC Contribute/Monitor/Evaluate the Teaching & Learning processes:

- Encouraging faculty to Adopt innovative methods and techniques
- Continuous observation
- Submission of reports
- Suggestions to faculty
- Meetings and discussions
- Implementation of decisions
- Attending conference on Best practices in teaching learning & evaluation

2.13 Initiatives undertaken towards faculty development

| <i>Faculty / Staff Development Programmes</i>  | <i>Number of faculty benefitted</i> |
|------------------------------------------------|-------------------------------------|
| Refresher courses                              | -                                   |
| UGC – Faculty Improvement Programme            | -                                   |
| HRD programmes                                 | -                                   |
| Orientation programmes                         | -                                   |
| Faculty exchange programme                     | -                                   |
| Staff training conducted by the university     | -                                   |
| Staff training conducted by other institutions | -                                   |
| Summer / Winter schools, Workshops, etc.       | -                                   |
| Others                                         | -                                   |

#### 2.14 Details of Administrative and Technical staff

| Category             | Number of Permanent Employees | Number of Vacant Positions | Number of permanent positions filled during the Year | Number of positions filled temporarily |
|----------------------|-------------------------------|----------------------------|------------------------------------------------------|----------------------------------------|
| Administrative Staff | 10                            | -                          | -                                                    | -                                      |
| Technical Staff      | -                             | -                          | -                                                    | -                                      |

### Criterion – III

### 3. Research, Consultancy and Extension

#### 3.1 Initiatives of the IQAC in Sensitizing/Promoting Research Climate in the institution

|                                                                                                                                                                                                                                                                                                                                                                                        |
|----------------------------------------------------------------------------------------------------------------------------------------------------------------------------------------------------------------------------------------------------------------------------------------------------------------------------------------------------------------------------------------|
| <p>Research committee</p> <p>Research based projects given to students</p> <p>Promoting faculty for participation and presentation of research papers in seminar and conferences and publishing research papers in Journals</p> <p>Promoting students for participation and presentation of research papers in seminar</p> <p>Organization of Research based programme viz Seminar</p> |
|----------------------------------------------------------------------------------------------------------------------------------------------------------------------------------------------------------------------------------------------------------------------------------------------------------------------------------------------------------------------------------------|

#### 3.2 Details regarding major projects NA

|                     | Completed | Ongoing | Sanctioned | Submitted |
|---------------------|-----------|---------|------------|-----------|
| Number              | -         | -       | -          | -         |
| Outlay in Rs. Lakhs | -         | -       | -          | -         |

#### 3.3 Details regarding minor projects NA

|                     | Completed | Ongoing | Sanctioned | Submitted |
|---------------------|-----------|---------|------------|-----------|
| Number              | -         | -       | -          | -         |
| Outlay in Rs. Lakhs | -         | -       | -          | -         |

#### 3.4 Details on research publications

|                          | International | National | Others |
|--------------------------|---------------|----------|--------|
| Peer Review Journals     | 02            | --       | --     |
| Non-Peer Review Journals | 02            | --       | --     |
| e-Journals               | 03            | --       | --     |
| Conference proceedings   | 01            | 11       | 11     |

#### 3.5 Details on Impact factor of publications:

Range  Average  h-index  Nos. in SCOPUS

#### 3.6 Research funds sanctioned and received from various funding agencies, industry and other organisations

| Nature of the Project      | Duration Year | Name of the funding Agency | Total grant sanctioned | Received |
|----------------------------|---------------|----------------------------|------------------------|----------|
| Major projects             | -             | -                          | -                      | -        |
| Minor Projects             | -             | -                          | -                      | -        |
| Interdisciplinary Projects | -             | -                          | -                      | -        |
| Industry sponsored         | -             | -                          | -                      | -        |



|                                                                                |   |   |   |   |
|--------------------------------------------------------------------------------|---|---|---|---|
| Projects sponsored by the University/ College                                  | - | - | - | - |
| Students research projects<br><i>(other than compulsory by the University)</i> | - | - | - | - |
| Any other(Specify)                                                             | - | - | - | - |
| Total                                                                          | - | - | - | - |

3.7 No. of books published i) With ISBN No.  Chapters in Edited Books

ii) Without ISBN No.

3.8 No. of University Departments receiving funds from

UGC-SAP  CAS  DST-FIST   
DPE  DBT Scheme/funds

3.9 For colleges Autonomy  CPE  DBT Star Scheme   
INSPIRE  CE  Any Other (specify)

3.10 Revenue generated through consultancy

3.11 No. of conferences organized by the Institution

| Level               | International | National | State | University | College |
|---------------------|---------------|----------|-------|------------|---------|
| Number              | -             | -        | 01    | -          | -       |
| Sponsoring agencies | -             | -        | UGC   | -          | -       |

3.12 No. of faculty served as experts, chairpersons or resource persons

3.13 No. of collaborations International  National  Any other

3.14 No. of linkages created during this year

3.15 Total budget for research for current year in lakhs :

From Funding agency  From Management of University/College

Total

3.16 No. of patents received this year

| Type of Patent |         | Number |
|----------------|---------|--------|
| National       | Applied | -      |
|                | Granted | -      |
| International  | Applied | -      |
|                | Granted | -      |
| Commercialised | Applied | -      |
|                | Granted | -      |

3.17 No. of research awards/ recognitions received by faculty and research fellows Of the institute in the year

| Total | International | National | State | University | Dist | College |
|-------|---------------|----------|-------|------------|------|---------|
| 01    | -             | 01       | -     | -          | -    | -       |

3.18 No. of faculty from the Institution who are Ph. D. Guides   
and students registered under them

3.19 No. of Ph.D. awarded by faculty from the Institution

3.20 No. of Research scholars receiving the Fellowships (Newly enrolled + existing ones)

JRF  SRF  Project Fellows  Any other

3.21 No. of students Participated in NSS events:

University level  State level

National level  International level

3.22 No. of students participated in NCC events:

University level  State level

National level  International level

3.23 No. of Awards won in NSS:

University level  State level

National level  International level

3.24 No. of Awards won in NCC:

University level  State level

National level  International level

3.25 No. of Extension activities organized

University forum  College forum

NCC  NSS  Any other

3.26 Major Activities during the year in the sphere of extension activities and Institutional Social Responsibility

- Workshop for pregnant and lactating mothers at Rural hospital
- Workshop for adolescent girls regarding Nutrition & Health
- Lecture on diet and health for rural women Mandve
- Lecture on hygiene for school students
- Nutritious recipe distribution to children
- Speech on 'Health care during adolescence' and A role play by students on 'Importance of girls education
- Speech on 'Importance of women education' to rural women Mandve
- Speech on '21st century women & challenges' and Poster presentation on Women Empowerment for hostel students
- Speech on Role of women in eradicating illiteracy for school students
- Exhibition for Junior college students
- Awareness regarding environment by students
- Blood group checking camp & HB estimation of rural students of Malewadi
- Tree plantation
- Presentation of street play on social issues
- Workshop for paper quilling

## Criterion – IV

### 4. Infrastructure and Learning Resources

#### 4.1 Details of increase in infrastructure facilities:

| Facilities                                                                        | Existing    | Newly created | Source of Fund | Total |
|-----------------------------------------------------------------------------------|-------------|---------------|----------------|-------|
| Campus area                                                                       | 12.87 acres | -             | -              | -     |
| Class rooms                                                                       | 03          | -             | -              | -     |
| Laboratories                                                                      | 07          | -             | -              | -     |
| Seminar Halls                                                                     | 01          | -             | -              | -     |
| No. of important equipments purchased ( $\geq$ 1-0 lakh) during the current year. | -           | -             | -              | -     |
| Value of the equipment purchased during the year (Rs. in Lakhs)                   | -           | -             | -              | -     |
| Others                                                                            | -           | -             | -              | -     |

#### 4.2 Computerization of administration and library

|     |
|-----|
| Yes |
|-----|

#### 4.3 Library services:

|                  | Existing                             |        | Newly added |       | Total |        |
|------------------|--------------------------------------|--------|-------------|-------|-------|--------|
|                  | No.                                  | Value  | No.         | Value | No.   | Value  |
| Text Books       | 1751                                 | 474128 | 182         | 51277 | 1933  | 525405 |
| Reference Books  | 648                                  | 107907 | 69          | 6765  | 717   | 114672 |
| e-Books          | N-LIST Programme                     | 15000  | -           | 5000  | -     | 20000  |
| Journals         | 21                                   | 58749  | 2           | 10450 | 23    | 69199  |
| e-Journals       | N-LIST Programme                     | -      | -           | -     | -     | -      |
| Digital Database | S.N.D.T. Women's University Database | 41100  | -           | 16800 | -     | 57900  |
| CD & Video       | 214                                  | 45375  | 2           | 253   | 216   | 45628  |
| Others (specify) | -                                    | -      | -           | -     | -     | -      |

#### 4.4 Technology up gradation (overall)

|          | Total Computers | Computer Labs | Internet | Browsing Centres | Computer Centres | Office | Departments | Others |
|----------|-----------------|---------------|----------|------------------|------------------|--------|-------------|--------|
| Existing | 23              | 11            | 06       | 01               | -                | 02     | 03          | 01     |
| Added    | -               | -             | -        | -                | -                | -      | -           | -      |
| Total    | -               | -             | -        | -                | -                | -      | -           | -      |

4.5 Computer, Internet access, training to teachers and students and any other programme for technology upgradation (Networking, e-Governance etc.)

MS office , Fundamentals of computer Internet access, photo scanning documents for students

4.6 Amount spent on maintenance in lakhs :

|                                          |                |
|------------------------------------------|----------------|
| i) ICT                                   | Rs.0 .13015 /- |
| ii) Campus Infrastructure and facilities | Rs. 0.52677 /- |
| iii) Equipments                          | -              |
| iv) Others                               | -              |
| Total :                                  | Rs. 0.65692 /- |

**Criterion – V**  
**5. Student Support and Progression**

5.1 Contribution of IQAC in enhancing awareness about Student Support Services

Student’s representative in IQAC  
 Student council  
 Student feedback  
 Programmes organized by students

5.2 Efforts made by the institution for tracking the progression

Actions taken on suggestions  
 Encouraging students for participation in different activities

5.3 (a) Total Number of students

| UG  | PG | Ph. D. | Others |
|-----|----|--------|--------|
| 155 | -  | -      | -      |

(b) No. of students outside the state -

(c) No. of international students -

|     |    |   |       |     |     |
|-----|----|---|-------|-----|-----|
|     | No | % |       | No  | %   |
| Men | -  | - | Women | 155 | 100 |

| Last Year (2014-15) |    |    |     |                       |       | This Year (2015-16) |    |    |     |                       |       |
|---------------------|----|----|-----|-----------------------|-------|---------------------|----|----|-----|-----------------------|-------|
| General             | SC | ST | OBC | Physically Challenged | Total | General             | SC | ST | OBC | Physically Challenged | Total |
| 82                  | 17 | -  | 19  | -                     | 136   | 84                  | 21 | -  | 24  | -                     | 155   |

Demand ratio 75      Dropout % 12.25

5.4 Details of student support mechanism for coaching for competitive examinations (If any)

Activities: Issued Books  
 Guidance  
 Display of MPSC & other Exam advertisements  
 Guidance for online form filling

No. of students beneficiaries 21

5.5 No. of students qualified in these examinations

NET - SET/SLET - GATE - CAT -  
 IAS/IPS etc - State PSC - UPSC - Others -

5.6 Details of student counselling and career guidance

Career guidance lectures on Career opportunities in child counselling for all students  
 Counselling cell

No. of students benefitted 18

5.7 Details of campus placement

| <i>On campus</i>                |                                 |                           | <i>Off Campus</i>         |
|---------------------------------|---------------------------------|---------------------------|---------------------------|
| Number of Organizations Visited | Number of Students Participated | Number of Students Placed | Number of Students Placed |
| -                               | -                               | -                         | 04                        |

5.8 Details of gender sensitization programmes

Guest lecture on Status of women and legal protection  
 Exhibition using posters on Status of women and legal protection  
 Exhibition using posters on Empowerment of women for hostel girls by T.Y. B.Sc students

5.9 Students Activities

5.9.1 No. of students participated in Sports, Games and other events

State/ University level 3 National level 2 International level -

No. of students participated in cultural events

State/ University level  National level  International level

5.9.2 No. of medals /awards won by students in Sports, Games and other events

Sports: State/ University level  National level  International level

Cultural: State/ University level  National level  International level

5.10 Scholarships and Financial Support

|                                                                      | Number of students | Amount      |
|----------------------------------------------------------------------|--------------------|-------------|
| Financial support from institution                                   | -                  | -           |
| Financial support from government                                    | 53                 | Rs.418495/- |
| Financial support from other sources                                 | -                  | -           |
| Number of students who received International/ National recognitions | -                  | -           |

5.11 Student organised / initiatives

Fairs : State/ University level  National level  International level

Exhibition: State/ University level  National level  International level

5.12 No. of social initiatives undertaken by the students

5.13 Major grievances of students (if any) redressed: \_\_\_\_\_ - \_\_\_\_\_

## Criterion – VI

### 6. Governance, Leadership and Management

6.1 State the Vision and Mission of the institution

Vision: Tewo Sada Dnyanmaya Pradeep

Mission: Empowerment of Rural Women for Empowerment of Society

6.2 Does the Institution has a management Information System

Yes (MIS operated by Govt of Maharashtra state )

6.3 Quality improvement strategies adopted by the institution for each of the following:

6.3.1 Curriculum Development

Attended meeting called by University on Choice based credit

### 6.3.2 Teaching and Learning

Various techniques and teaching aids used for teaching and learning  
Preparation of various teaching aids viz PPT, Models, Charts and Posters  
Use of online videos and interactive multimedia  
Field visits, Group discussions, Presentations, Projects, Assignments

### 6.3.3 Examination and Evaluation

Classroom test on each module  
Presentations, Projects, Assignments  
Continuous evaluation  
Preliminary examination for each semester

### 6.3.4 Research and Development

Encouraging staff to participate in research activities  
Modular system  
Organization of Research based events & promoting students for participation

### 6.3.5 Library, ICT and physical infrastructure / instrumentation

Subscription of magazines and Journals  
Prepare ICT for teaching  
Maintenance of existing infrastructure

### 6.3.6 Human Resource Management

Attendance of faculty in Seminars, Conference and Workshops  
Staff academy activities

### 6.3.7 Faculty and Staff recruitment

Appointment of CHB teachers as per need  
Invited guest lecturers for specific topics

### 6.3.8 Industry Interaction / Collaboration

Preschools, Anganwadi, Rural Hospital, Blood Bank,  
Cooperative Milk Industry, Cooperative Bank,  
Financial Institute

6.3.9 Admission of Students

- Campaigning, Banners and pamphlets, Counselling
- Admission of students from different strata of society
- Encouraged students for readmission in the course
- Counselling of students and parents for continuation of education
- Exhibition for junior college students and parents

6.4 Welfare schemes for

|              |                                     |
|--------------|-------------------------------------|
| Teaching     | Sevak kalyan Nidhi Insurance scheme |
| Non teaching | Sevak kalyan Nidhi Insurance scheme |
| Students     | Vidyathri vima                      |

6.5 Total corpus fund generated

-

6.6 Whether annual financial audit has been done

Yes  No

6.7 Whether Academic and Administrative Audit (AAA) has been done?

| Audit Type     | External |        | Internal |            |
|----------------|----------|--------|----------|------------|
|                | Yes/No   | Agency | Yes/No   | Authority  |
| Academic       | -        | -      | Yes      | University |
| Administrative | -        | -      | Yes      | Principal  |

6.8 Does the University/ Autonomous College declare results within 30 days?

For UG Programmes Yes  No

For PG Programmes Yes  No

6.9 What efforts are made by the University/ Autonomous College for Examination Reforms?

- University exam for S.Y from Academic year 2013-14
- Online question papers on portal 15 to 30 min prior to exam
- Examination forms filled on portal
- Online Hall tickets

6.10 What efforts are made by the University to promote autonomy in the affiliated/constituent colleges?

University calls for proposals to be submitted to UGC under the scheme of College for Potential Excellence



#### 6.11 Activities and support from the Alumni Association

- ☐ Visits to college
- ☐ Encourage students for further studies
- ☐ Participate in counselling for admissions

#### 6.12 Activities and support from the Parent – Teacher Association

- ☐ Meetings
- ☐ Suggestions

#### 6.13 Development programmes for support staff

- ☐ Training for online admission process clerks
- ☐ Workshop on use of computers in office work

#### 6.14 Initiatives taken by the institution to make the campus eco-friendly

- ☐ Tree plantation
- ☐ Cleaning premises
- ☐ Workshops on Eco friendly dyes and materials
- ☐ Workshops on temple waste management
- ☐ Lecture
- ☐ Moving on to paperless work
- ☐ Minimal use of electricity
- ☐ Use of drain water and awareness regarding use of clean water

### **Criterion – VII**

#### **7. Innovations and Best Practices**

7.1 Innovations introduced during this academic year which have created a positive impact on the functioning of the institution. Give details.

- ☐ Exhibition of articles made by students and selling it to create awareness regarding course in the community
- ☐ Fashion Show Competition
- ☐ Environmental Awareness programme

7.2 Provide the Action Taken Report (ATR) based on the plan of action decided upon at the beginning of the year

Annexure IV

7.3 Give two Best Practices of the institution

- Earn and learn scheme through Exhibition
- Development and distribution of nutritious recipes
- Workshop on eco friendly dyes
- Temple waste management
- Workshop on Premarital counselling
- Field work

7.4 Contribution to environmental awareness / protection

- Rally
- Street play
- Tree plantation
- Swachata abhiyan
- Workshops on Eco friendly garments using natural dyes
- Workshops on temple waste management
- Organized UGC sponsored state level seminar on 'Environmental Protection: An interdisciplinary approach for sustainable development'
- Presentation on Domestic water conservation techniques to F.Y & S.Y students
- Awareness regarding communicable diseases through pamphlets & videos
- Awareness in community regarding biodiversity and its significance through pamphlets distribution, PPT presentations & feedback by T.Y students

7.5 Whether environmental audit was conducted?

Yes

No

7.6 Any other relevant information the institution wishes to add. ( for example SWOT Analysis)

**Strength:**

- College received funds from UGC for construction of girls Hostel
- Students of S.Y won first rank of University Best Athlete
- College won the General Championship in Athletics
- College won the SPM General Championship in sports
- Introduced two add on courses of MSBVE viz C.C in Embroidery & Ornamentation and C.C in Computer operation with M.S. office

**Weakness:**

- Less student strength: Admission campaigning was done for improving student strength. Exhibition was organized by college for students of Junior college for increase in student strength
- Students less confidence in communicating in English: Efforts made for improving students confidence in communicating in English through various activities

**8. Plans of institution for next year**

Annexure V

Name Dr. Bhosale Bharati Sambhajirao



Signature of the Coordinator, IQAC

**IQAC Coordinator**  
**Smt. Ratnaprabhadevi Mohite-Patil**  
**College Of Home Science For Women**  
**Akluj Tal. Malshiras Dist. Solapur**

Name Dr Surve Rahul Nirvuti



Signature of the Chairperson, IQAC

**PRINCIPAL**  
**Smt. Ratnaprabhadevi Mohite-Patil**  
**College of Home Science for Women**  
**Akluj, Tal. Malshiras. Dist Solapur**



**Achievements :**

- Strength of the student in all classes improved due to admission campaigning, counselling and exhibition organized for students and parents.
- Lectures organized on various issues created awareness and enhanced knowledge among students regarding various issues related to women, society, environment, health, career opportunities, consumer rights etc.
- Student learnt about societal problems and participated in various social work through N.S.S. activities. Students learnt about working in group, leading the group etc.
- Students interacted with their academic peers through various cultural events, sport events and leadership camp.
- Various activities developed self confidence in students through participation, interactions and their achievements.
- Student gained knowledge and skills through skill oriented programmes.
- Students gained entrepreneurship skills and market skills through projects, exhibitions and stalls.
- Field visits helped students to aware about surroundings, observe and report writing skills .Students got practical experience.
- Participation and achievements in various competitions developed sport spirit among the students.
- Developed Research atmosphere among students and faculty through organization and participation of state level seminar on environmental protection.

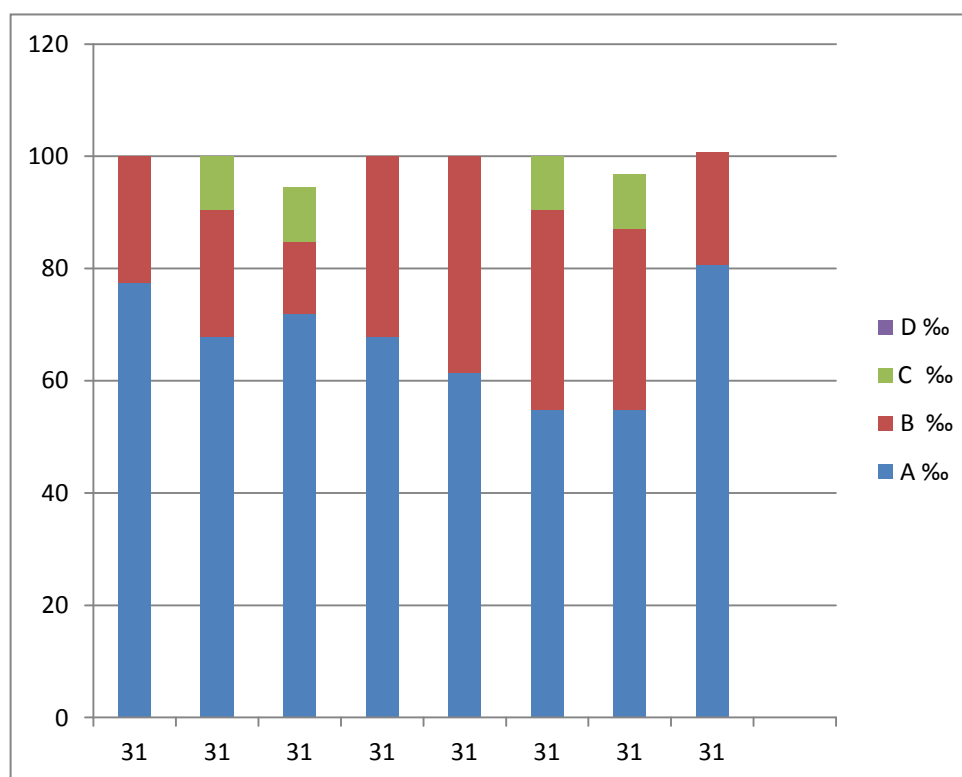
## ANALYSIS OF FEEDBACK FROM STUDENTS

## QUESTIONNAIRE NO 01

Academic Year 2015-16

Class : Class:T.Y.B.Sc

| Que No. | Total Responses | Answer Option |       |        |       |        |      |        |   |
|---------|-----------------|---------------|-------|--------|-------|--------|------|--------|---|
|         |                 | A             |       | B      |       | C      |      |        |   |
|         |                 | Number        | %     | Number | %     | Number | %    | Number | % |
| 1       | 31              | 24            | 77.41 | 7      | 22.58 |        |      |        |   |
| 2       | 31              | 21            | 67.74 | 7      | 22.58 | 3      | 9.67 |        |   |
| 3       | 31              | 22            | 71.96 | 4      | 12.9  | 3      | 9.67 |        |   |
| 4       | 31              | 21            | 67.74 | 10     | 32.25 |        |      |        |   |
| 5       | 31              | 19            | 61.29 | 12     | 38.7  |        |      |        |   |
| 6       | 31              | 17            | 54.83 | 11     | 35.48 | 3      | 9.67 |        |   |
| 7       | 31              | 17            | 54.83 | 10     | 32.25 | 3      | 9.67 |        |   |
| 8       | 31              | 25            | 80.64 | 6      | 20    |        |      |        |   |



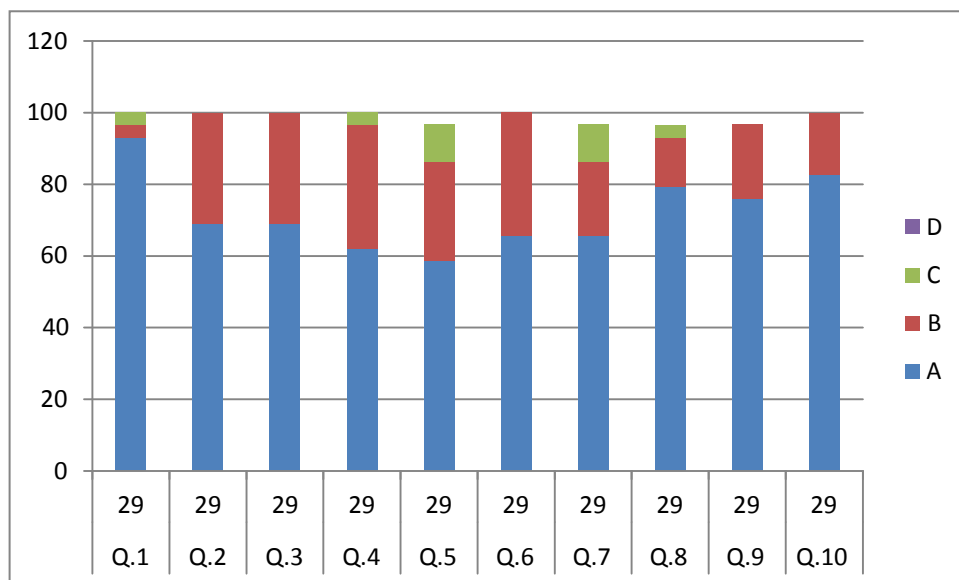
**ANALYSIS OF FEEDBACK ON TEACHER**

**Academic Year :2015-16**

**QUESTIONNAIRE NO . 02**

**Class:T.Y.B.Sc. Name of Teacher :Dr.Bharti Bhosale**

| Que No.   | Total Responses | Answer Option |       |        |       |        |       |        |   |
|-----------|-----------------|---------------|-------|--------|-------|--------|-------|--------|---|
|           |                 | A             |       | B      |       | C      |       |        |   |
|           |                 | Number        | %     | Number | %     | Number | %     | Number | % |
| <b>1</b>  | 29              | 27            | 93.1  | 1      | 3.44  | 1      | 3.44  |        |   |
| <b>2</b>  | 29              | 20            | 68.96 | 9      | 31.03 |        |       |        |   |
| <b>3</b>  | 29              | 21            | 68.96 | 8      | 27.58 |        |       |        |   |
| <b>4</b>  | 29              | 18            | 62.06 | 10     | 34.48 | 1      | 3.44  |        |   |
| <b>5</b>  | 29              | 17            | 58.62 | 8      | 27.58 | 3      | 10.34 |        |   |
| <b>6</b>  | 29              | 19            | 65.51 | 10     | 34.48 | 2      | 6.89  |        |   |
| <b>7</b>  | 29              | 19            | 65.51 | 6      | 20.68 | 3      | 10.34 |        |   |
| <b>8</b>  | 29              | 23            | 79.31 | 4      | 13.79 | 1      | 3.44  |        |   |
| <b>9</b>  | 29              | 22            | 75.86 | 6      | 20.68 | 2      | 6.89  |        |   |
| <b>10</b> | 29              | 24            | 82.75 | 5      | 17.24 |        |       |        |   |



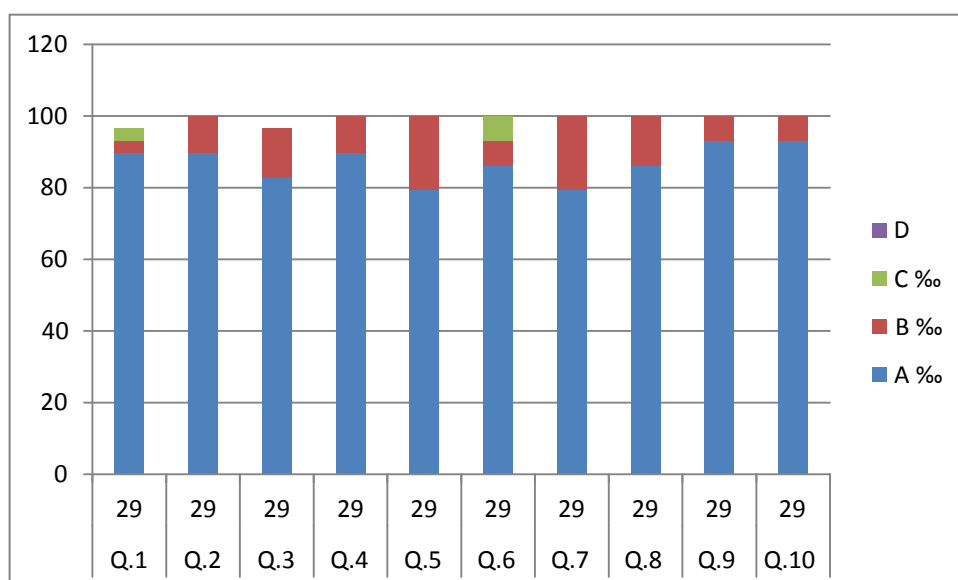
**ANALYSIS OF FEEDBACK ON TEACHER**

**Academic Year: 2015-16**

**QUESTIONNAIRE NO. 02**

**Class:T.Y.B.Sc. Name of Teacher :Dr.Bhise C.D.**

| Que No. | Total Responses | Answer Option |       |        |       |        |      |        |   |
|---------|-----------------|---------------|-------|--------|-------|--------|------|--------|---|
|         |                 | A             |       | B      |       | C      |      |        |   |
|         |                 | Number        | %     | Number | %     | Number | %    | Number | % |
| 1       | 29              | 26            | 89.65 | 1      | 3.44  | 1      | 3.44 |        |   |
| 2       | 29              | 26            | 89.65 | 3      | 10.34 |        |      |        |   |
| 3       | 29              | 25            | 82.75 | 4      | 13.79 |        |      |        |   |
| 4       | 29              | 26            | 89.65 | 3      | 10.34 |        |      |        |   |
| 5       | 29              | 23            | 79.31 | 6      | 20.68 |        |      |        |   |
| 6       | 29              | 25            | 86.2  | 2      | 6.8   | 2      | 6.89 |        |   |
| 7       | 29              | 23            | 79.31 | 6      | 20.68 |        |      |        |   |
| 8       | 29              | 25            | 86.2  | 4      | 13.79 |        |      |        |   |
| 9       | 29              | 27            | 93.1  | 2      | 6.8   |        |      |        |   |
| 10      | 29              | 27            | 93.1  | 2      | 6.8   |        |      |        |   |



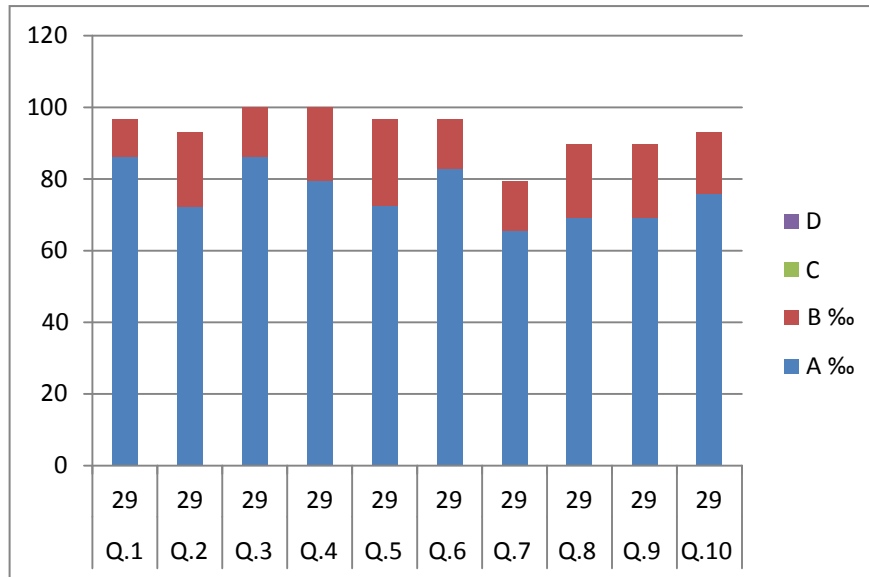
## ANALYSIS OF FEEDBACK ON TEACHER

Academic Year :2015-16

QUESTIONNAIRE NO . 02

Class:T.Y.B.Sc. Name of Teacher :Dr.Manohar J.B.

| Que No. | Total Responses | Answer Option |       |        |       |        |   |        |   |
|---------|-----------------|---------------|-------|--------|-------|--------|---|--------|---|
|         |                 | A             |       | B      |       | C      |   |        |   |
|         |                 | Number        | %     | Number | %     | Number | % | Number | % |
| 1       | 29              | 25            | 86.2  | 3      | 10.34 |        |   |        |   |
| 2       | 29              | 21            | 72.41 | 6      | 20.68 |        |   |        |   |
| 3       | 29              | 25            | 86.2  | 4      | 13.79 |        |   |        |   |
| 4       | 29              | 23            | 79.31 | 6      | 20.68 |        |   |        |   |
| 5       | 29              | 21            | 72.41 | 7      | 24.13 |        |   |        |   |
| 6       | 29              | 24            | 82.75 | 4      | 13.79 |        |   |        |   |
| 7       | 29              | 22            | 65.51 | 4      | 13.79 |        |   |        |   |
| 8       | 29              | 20            | 68.96 | 6      | 20.68 |        |   |        |   |
| 9       | 29              | 20            | 68.96 | 6      | 20.68 |        |   |        |   |
| 10      | 29              | 22            | 75.86 | 5      | 17.24 |        |   |        |   |





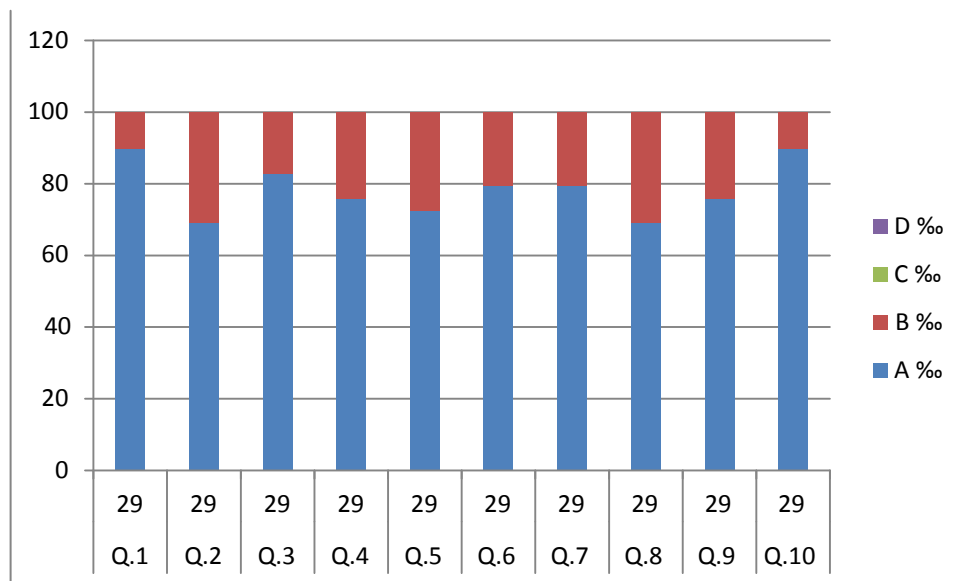
## ANALYSIS OF FEEDBACK ON TEACHER

Academic Year :2015-16

QUESTIONNAIRE NO . 02

Class:T.Y.B.Sc. Name of Teacher :Dr. Surve R.N.

| Que No. | Total Responses | Answer Option |       |        |       |        |   |        |   |
|---------|-----------------|---------------|-------|--------|-------|--------|---|--------|---|
|         |                 | A             |       | B      |       | C      |   | D      |   |
|         |                 | Number        | %     | Number | %     | Number | % | Number | % |
| 1       | 29              | 26            | 89.65 | 3      | 10.34 |        |   |        |   |
| 2       | 29              | 20            | 68.96 | 9      | 31.03 |        |   |        |   |
| 3       | 29              | 24            | 82.75 | 5      | 17.24 |        |   |        |   |
| 4       | 29              | 22            | 75.86 | 7      | 24.13 |        |   |        |   |
| 5       | 29              | 21            | 72.41 | 8      | 27.58 |        |   |        |   |
| 6       | 29              | 23            | 79.31 | 6      | 20.68 |        |   |        |   |
| 7       | 29              | 23            | 79.31 | 6      | 20.68 |        |   |        |   |
| 8       | 29              | 20            | 68.96 | 9      | 31.03 |        |   |        |   |
| 9       | 29              | 22            | 75.86 | 7      | 24.13 |        |   |        |   |
| 10      | 29              | 26            | 89.65 | 3      | 10.34 |        |   |        |   |



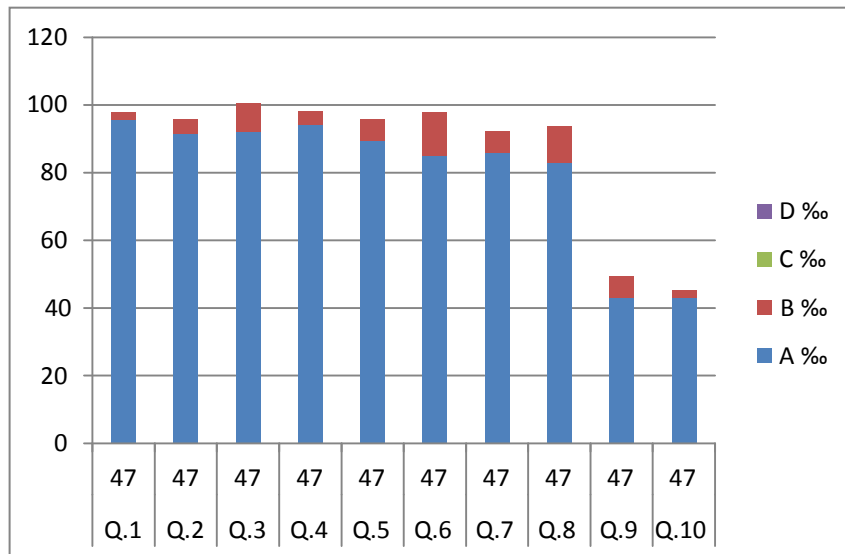
## ANALYSIS OF FEEDBACK ON TEACHER

Academic Year :2015-16

QUESTIONNAIRE NO . 02

Class:F.Y.B.Sc. Name of Teacher :-Prof. A.B. Ghadge

| Que No. | Total Responses | Answer Option |       |        |       |        |   |        |   |
|---------|-----------------|---------------|-------|--------|-------|--------|---|--------|---|
|         |                 | A             |       | B      |       | C      |   | D      |   |
|         |                 | Number        | %     | Number | %     | Number | % | Number | % |
| 1       | 47              | 45            | 95.74 | 1      | 2.12  |        |   |        |   |
| 2       | 47              | 43            | 91.48 | 2      | 4.25  |        |   |        |   |
| 3       | 47              | 43            | 92    | 4      | 8.51  |        |   |        |   |
| 4       | 47              | 44            | 94    | 2      | 4.25  |        |   |        |   |
| 5       | 47              | 42            | 89.36 | 3      | 6.38  |        |   |        |   |
| 6       | 47              | 40            | 85.1  | 6      | 12.76 |        |   |        |   |
| 7       | 47              | 40            | 86    | 3      | 6.38  |        |   |        |   |
| 8       | 47              | 39            | 83    | 5      | 10.63 |        |   |        |   |
| 9       | 47              | 43            | 43    | 3      | 6.38  |        |   |        |   |
| 10      | 47              | 44            | 43    | 1      | 2.12  |        |   |        |   |



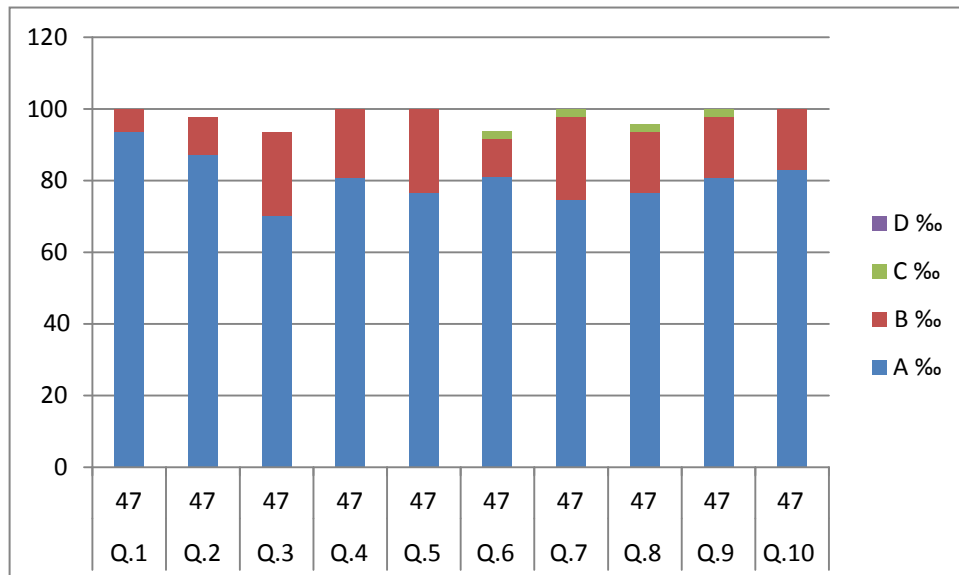
## ANALYSIS OF FEEDBACK ON TEACHER

Academic Year :2015-16

QUESTIONNAIRE NO . 02

Class:F.Y.B.Sc. Name of Teacher :-Dr. Bharati Bhosale

| Que No. | Total Responses | Answer Option |       |        |       |        |      |        |   |
|---------|-----------------|---------------|-------|--------|-------|--------|------|--------|---|
|         |                 | A             |       | B      |       | C      |      | D      |   |
|         |                 | Number        | %     | Number | %     | Number | %    | Number | % |
| 1       | 47              | 44            | 93.61 | 3      | 6.38  |        |      |        |   |
| 2       | 47              | 41            | 87.23 | 5      | 10.63 |        |      |        |   |
| 3       | 47              | 33            | 70.21 | 11     | 23.4  |        |      |        |   |
| 4       | 47              | 38            | 80.85 | 9      | 19.14 |        |      |        |   |
| 5       | 47              | 36            | 76.59 | 11     | 23.4  |        |      |        |   |
| 6       | 47              | 38            | 80.85 | 5      | 10.63 | 1      | 2.12 |        |   |
| 7       | 47              | 35            | 74.46 | 11     | 23.4  | 1      | 2.12 |        |   |
| 8       | 47              | 36            | 76.59 | 8      | 17.02 | 1      | 2.12 |        |   |
| 9       | 47              | 38            | 80.85 | 8      | 17.02 | 1      | 2.12 |        |   |
| 10      | 47              | 39            | 82.97 | 8      | 17.02 |        |      |        |   |



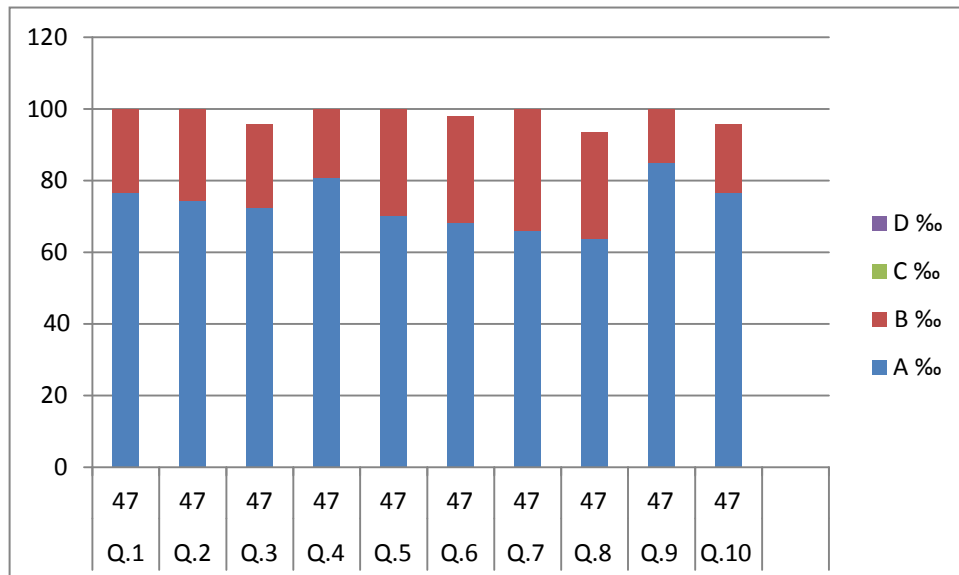
## ANALYSIS OF FEEDBACK ON TEACHER

Academic Year :2015-16

QUESTIONNAIRE NO . 02

Class:F.Y.B.Sc. Name of Teacher :-Dr. Jaysheela Manohar

| Que No. | Total Responses | Answer Option |       |        |       |        |   |        |   |
|---------|-----------------|---------------|-------|--------|-------|--------|---|--------|---|
|         |                 | A             |       | B      |       | C      |   | D      |   |
|         |                 | Number        | %     | Number | %     | Number | % | Number | % |
| 1       | 47              | 36            | 76.59 | 11     | 23.4  |        |   |        |   |
| 2       | 47              | 35            | 74.46 | 12     | 25.53 |        |   |        |   |
| 3       | 47              | 34            | 72.34 | 11     | 23.4  |        |   |        |   |
| 4       | 47              | 38            | 80.85 | 9      | 19.14 |        |   |        |   |
| 5       | 47              | 33            | 70.21 | 14     | 29.78 |        |   |        |   |
| 6       | 47              | 32            | 68.08 | 14     | 29.78 |        |   |        |   |
| 7       | 47              | 31            | 65.95 | 16     | 34.04 |        |   |        |   |
| 8       | 47              | 30            | 63.82 | 14     | 29.78 |        |   |        |   |
| 9       | 47              | 40            | 85.1  | 7      | 14.89 |        |   |        |   |
| 10      | 47              | 36            | 76.59 | 9      | 19.14 |        |   |        |   |

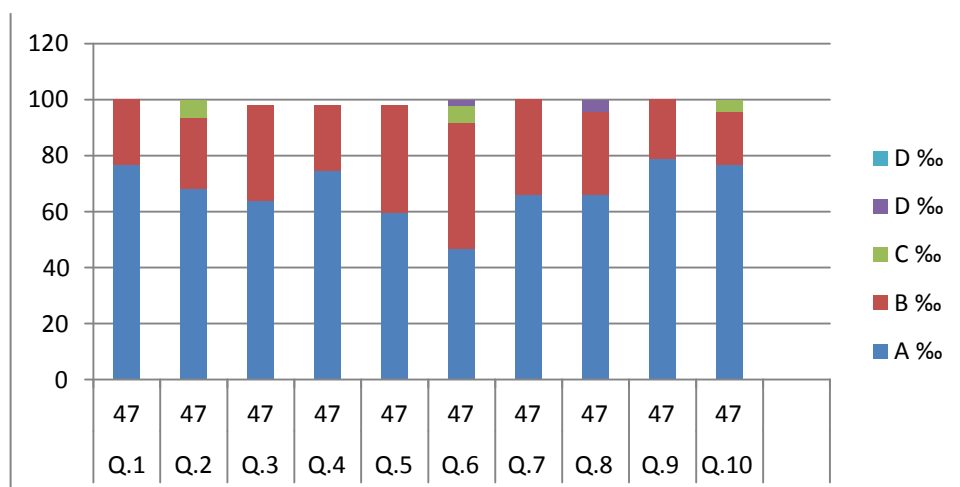


## ANALYSIS OF FEEDBACK ON TEACHER

Academic Year :2015-16

QUESTIONNAIRE NO . 02 Class:F.Y.B.Sc. Name of Teacher : Prof. Nimbhorkar R.R.

| Que No. | Total Responses | Answer Option |       |        |       |        |      |        |      |
|---------|-----------------|---------------|-------|--------|-------|--------|------|--------|------|
|         |                 | A             |       | B      |       | C      |      | D      |      |
|         |                 | Number        | %     | Number | %     | Number | %    | Number | %    |
| 1       | 47              | 36            | 76.59 | 11     | 23.4  |        |      |        |      |
| 2       | 47              | 32            | 68.08 | 12     | 25.53 | 3      | 6.38 |        |      |
| 3       | 47              | 30            | 63.82 | 16     | 34.04 |        |      |        |      |
| 4       | 47              | 35            | 74.46 | 11     | 23.4  |        |      |        |      |
| 5       | 47              | 28            | 59.57 | 18     | 38.29 |        |      |        |      |
| 6       | 47              | 22            | 46.8  | 21     | 44.68 | 3      | 6.38 | 1      | 2.12 |
| 7       | 47              | 31            | 65.95 | 16     | 34.04 |        |      |        |      |
| 8       | 47              | 31            | 65.95 | 14     | 29.78 |        |      | 2      | 4.25 |
| 9       | 47              | 37            | 78.72 | 10     | 21.27 |        |      |        |      |
| 10      | 47              | 36            | 76.59 | 9      | 19.14 | 2      | 4.25 |        |      |



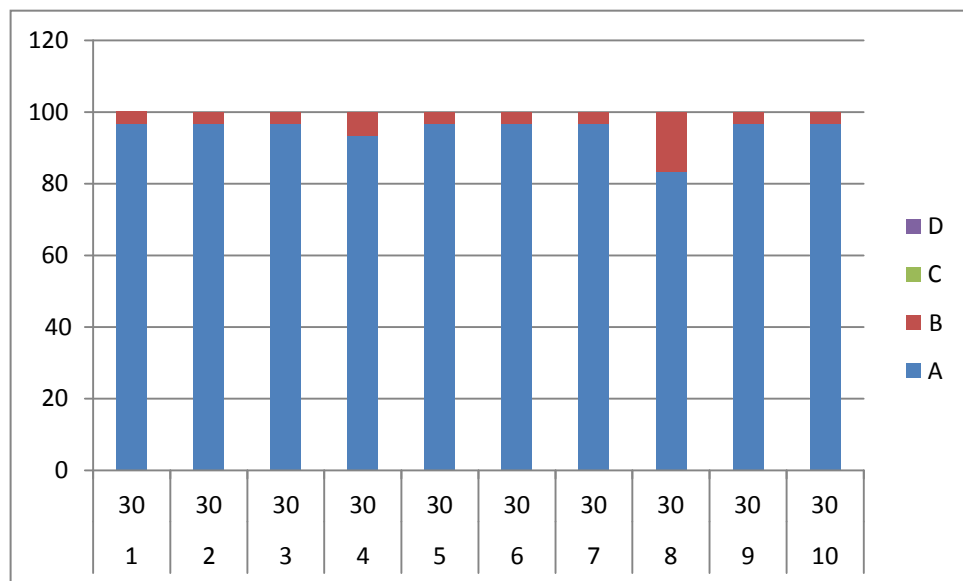
## ANALYSIS OF FEEDBACK ON TEACHER

Academic Year :2015-16

QUESTIONNAIRE NO . 02

Class:S.Y.B.Sc. Name of Teacher : Prof. Ghadge A.B.

| Que No. | Total Responses | Answer Option |       |        |       |        |   |        |   |
|---------|-----------------|---------------|-------|--------|-------|--------|---|--------|---|
|         |                 | A             |       | B      |       | C      |   | D      |   |
|         |                 | Number        | %     | Number | %     | Number | % | Number | % |
| 1       | 30              | 29            | 96.77 | 1      | 3.33  |        |   |        |   |
| 2       | 30              | 29            | 96.66 | 1      | 3.33  |        |   |        |   |
| 3       | 30              | 29            | 96.66 | 1      | 3.33  |        |   |        |   |
| 4       | 30              | 28            | 93.33 | 2      | 6.66  |        |   |        |   |
| 5       | 30              | 29            | 96.66 | 1      | 3.33  |        |   |        |   |
| 6       | 30              | 29            | 96.66 | 1      | 3.33  |        |   |        |   |
| 7       | 30              | 29            | 96.66 | 1      | 3.33  |        |   |        |   |
| 8       | 30              | 25            | 83.33 | 5      | 16.66 |        |   |        |   |
| 9       | 30              | 29            | 96.66 | 1      | 3.33  |        |   |        |   |
| 10      | 30              | 29            | 96.66 | 1      | 3.33  |        |   |        |   |



**ANALYSIS OF FEEDBACK ON TEACHER**

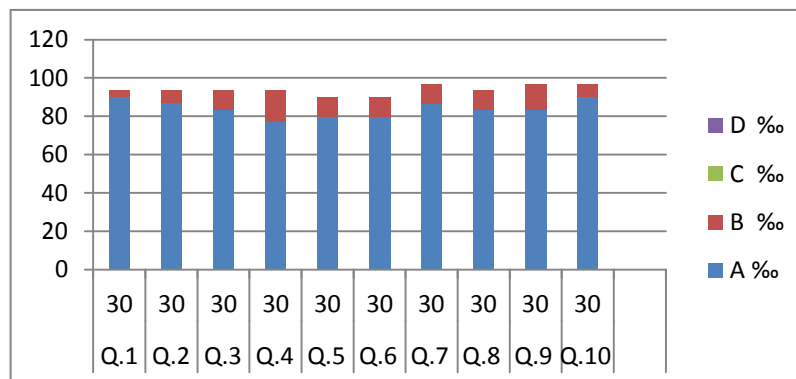
**QUESTIONNAIRE NO . 02**

**Academic Year :2015-16**

**Class:S.Y.B.Sc.**

**Name of Teacher :Dr.R.N.Surve**

| Que No. | Total Responses | Answer Option |       |        |       |        |   |        |   |
|---------|-----------------|---------------|-------|--------|-------|--------|---|--------|---|
|         |                 | A             |       | B      |       | C      |   | D      |   |
|         |                 | Number        | %     | Number | %     | Number | % | Number | % |
| 1       | 30              | 27            | 90    | 1      | 3.33  |        |   |        |   |
| 2       | 30              | 26            | 86.66 | 2      | 6.66  |        |   |        |   |
| 3       | 30              | 25            | 83.33 | 3      | 10    |        |   |        |   |
| 4       | 30              | 23            | 77    | 5      | 16.66 |        |   |        |   |
| 5       | 30              | 24            | 80    | 3      | 10    |        |   |        |   |
| 6       | 30              | 24            | 80    | 3      | 10    |        |   |        |   |
| 7       | 30              | 26            | 86.66 | 3      | 10    |        |   |        |   |
| 8       | 30              | 25            | 83.33 | 3      | 10    |        |   |        |   |
| 9       | 30              | 25            | 83.33 | 4      | 13.33 |        |   |        |   |
| 10      | 30              | 27            | 90    | 2      | 6.66  |        |   |        |   |



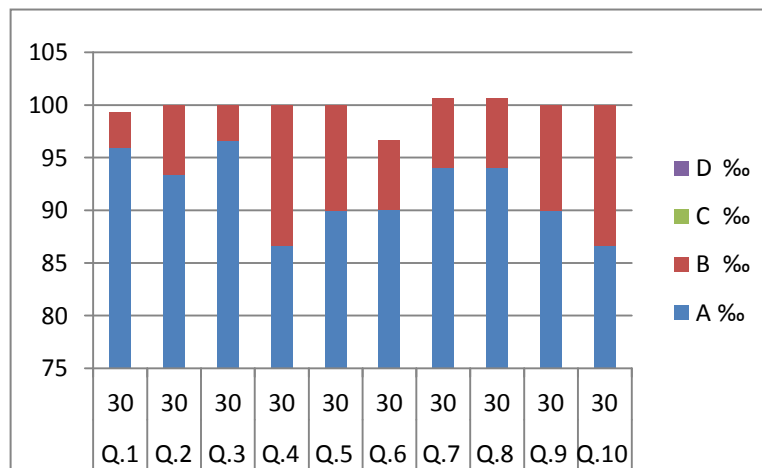
**ANALYSIS OF FEEDBACK ON TEACHER**

**QUESTIONNAIRE NO . 02**

**Academic Year :2015-16**

**Class:S.Y.B.Sc. Name of Teacher :Dr. Manohar J.B.**

| Que No. | Total Responses | Answer Option |       |        |       |        |   |        |   |
|---------|-----------------|---------------|-------|--------|-------|--------|---|--------|---|
|         |                 | A             |       | B      |       | C      |   | D      |   |
|         |                 | Number        | %     | Number | %     | Number | % | Number | % |
| 1       | 30              | 29            | 96    | 1      | 3.33  |        |   |        |   |
| 2       | 30              | 28            | 93.33 | 2      | 6.66  |        |   |        |   |
| 3       | 30              | 29            | 96.66 | 1      | 3.33  |        |   |        |   |
| 4       | 30              | 26            | 86.66 | 4      | 13.33 |        |   |        |   |
| 5       | 30              | 27            | 90    | 3      | 10    |        |   |        |   |
| 6       | 30              | 27            | 90    | 2      | 6.66  |        |   |        |   |
| 7       | 30              | 28            | 94    | 2      | 6.66  |        |   |        |   |
| 8       | 30              | 28            | 94    | 2      | 6.66  |        |   |        |   |
| 9       | 30              | 27            | 90    | 3      | 10    |        |   |        |   |
| 10      | 30              | 26            | 86.66 | 4      | 13.33 |        |   |        |   |





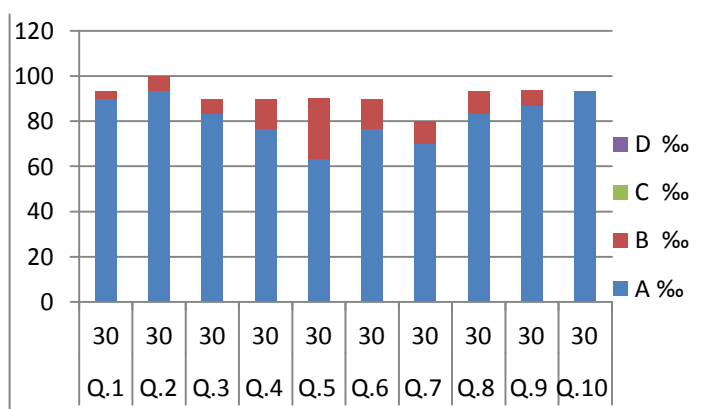
**ANALYSIS OF FEEDBACK ON TEACHER**

**QUESTIONNAIRE NO . 02**

**Academic Year :2015-16**

**Class:S.Y.B.Sc. Name of Teacher :Dr. Bhise C.D.**

| Que No. | Total Responses | Answer Option |       |        |       |        |   |        |   |
|---------|-----------------|---------------|-------|--------|-------|--------|---|--------|---|
|         |                 | A             |       | B      |       | C      |   | D      |   |
|         |                 | Number        | %     | Number | %     | Number | % | Number | % |
| 1       | 30              | 27            | 90    | 1      | 3.33  |        |   |        |   |
| 2       | 30              | 28            | 93.33 | 2      | 6.66  |        |   |        |   |
| 3       | 30              | 25            | 83.33 | 2      | 6.66  |        |   |        |   |
| 4       | 30              | 33            | 76.66 | 4      | 13.33 |        |   |        |   |
| 5       | 30              | 19            | 63.33 | 8      | 26.66 |        |   |        |   |
| 6       | 30              | 23            | 76.66 | 4      | 13.33 |        |   |        |   |
| 7       | 30              | 21            | 70    | 3      | 10    |        |   |        |   |
| 8       | 30              | 25            | 83.33 | 3      | 10    |        |   |        |   |
| 9       | 30              | 26            | 86.66 | 2      | 6.66  |        |   |        |   |
| 10      | 30              | 28            | 93.33 |        |       |        |   |        |   |



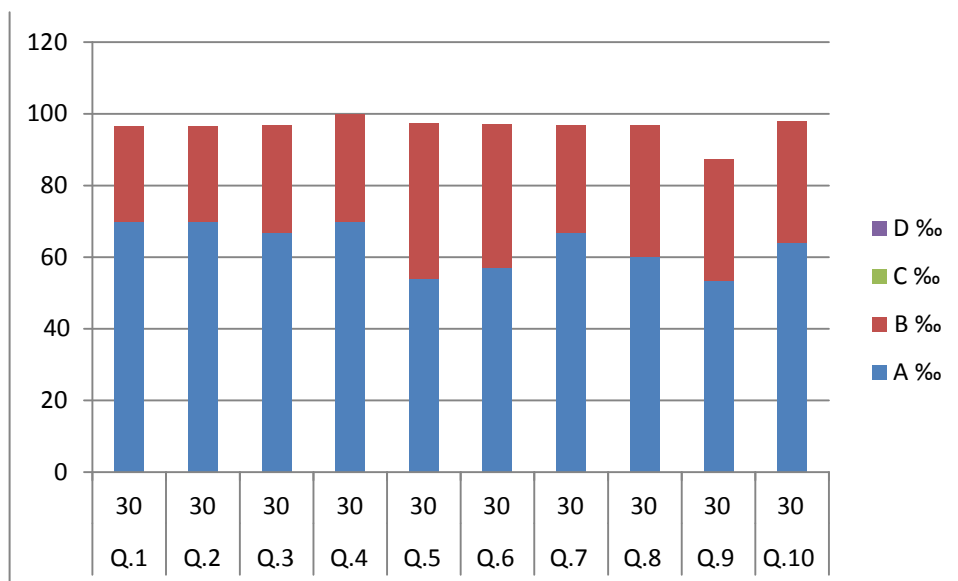
**ANALYSIS OF FEEDBACK ON TEACHER**

**QUESTIONNAIRE NO . 02**

**Academic Year :2015-16**

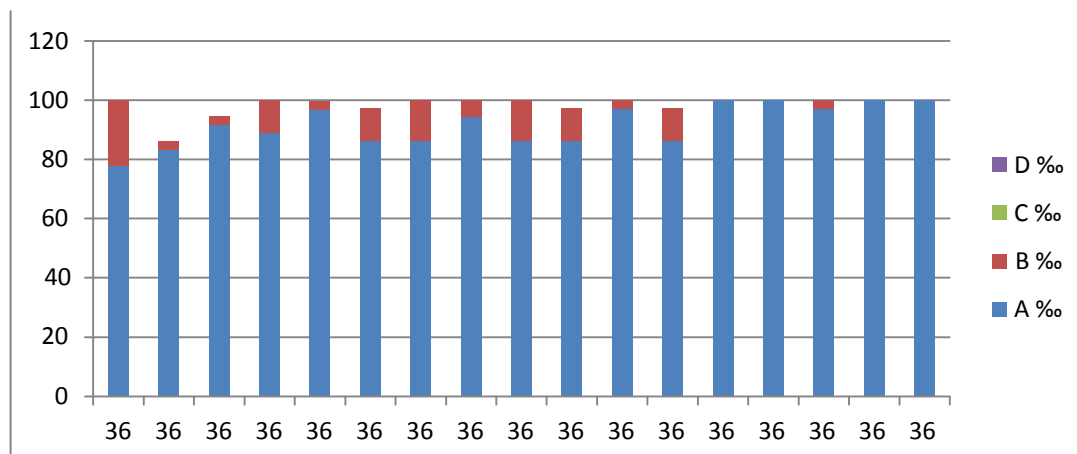
**Class:S.Y.B.Sc. Name of Teacher : Prof . Nimbhorkar R.R.**

| Que No. | Total Responses | Answer Option |       |        |   |        |   |        |   |
|---------|-----------------|---------------|-------|--------|---|--------|---|--------|---|
|         |                 | A             |       | B      |   | C      |   | D      |   |
|         |                 | Number        | %     | Number | % | Number | % | Number | % |
| 1       | 30              | 21            | 70    | 8      |   |        |   |        |   |
| 2       | 30              | 21            | 70    | 8      |   |        |   |        |   |
| 3       | 30              | 20            | 66.66 | 9      |   |        |   |        |   |
| 4       | 30              | 20            | 70    | 9      |   |        |   |        |   |
| 5       | 30              | 16            | 54    | 13     |   |        |   |        |   |
| 6       | 30              | 17            | 57    | 12     |   |        |   |        |   |
| 7       | 30              | 20            | 66.66 | 9      |   |        |   |        |   |
| 8       | 30              | 18            | 60    | 11     |   |        |   |        |   |
| 9       | 30              | 16            | 53.33 | 10     |   |        |   |        |   |
| 10      | 30              | 19            | 64    | 10     |   |        |   |        |   |



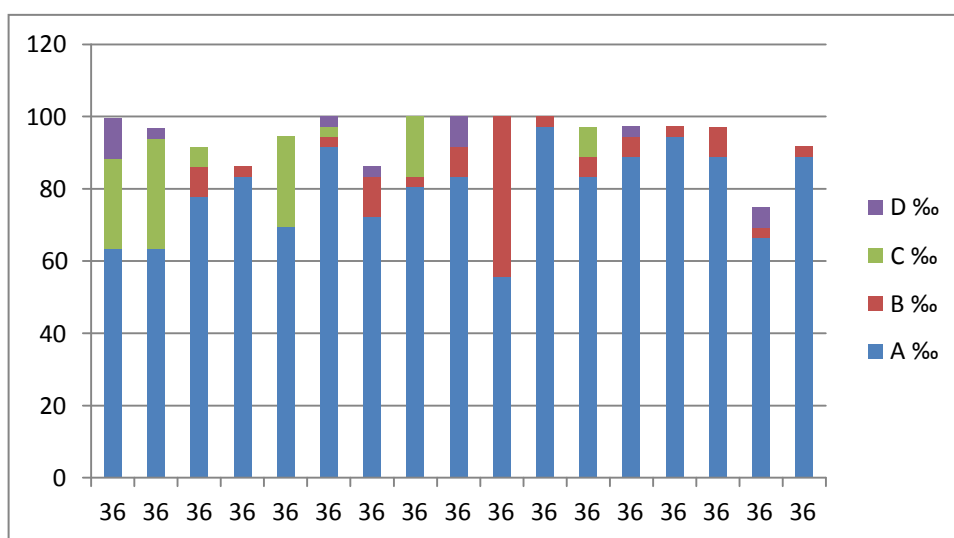
**STUDENTS OVERALL EVALUATION OF THE PROGRAMME AND TEACHING**  
**QUESTIONNAIRE NO . 03**  
**Academic Year :2015-16**  
**Class:T.Y.B.Sc.**  
**Name of Teacher :Dr.J.B.Manohar**

| Que No. | Total Responses | Answer Option |       |        |       |        |   |        |   |
|---------|-----------------|---------------|-------|--------|-------|--------|---|--------|---|
|         |                 | A             |       | B      |       | C      |   | D      |   |
|         |                 | Number        | %     | Number | %     | Number | % | Number | % |
| 1       | 36              | 28            | 77.77 | 8      | 22.22 |        |   |        |   |
| 2       | 36              | 30            | 83.33 | 1      | 2.77  |        |   |        |   |
| 3       | 36              | 33            | 91.66 | 1      | 2.77  |        |   |        |   |
| 4       | 36              | 32            | 88.88 | 4      | 11.1  |        |   |        |   |
| 5       | 36              | 28            | 96.66 | 1      | 2.77  |        |   |        |   |
| 6       | 36              | 31            | 86.11 | 4      | 11.1  |        |   |        |   |
| 7       | 36              | 31            | 86.11 | 5      | 13.88 |        |   |        |   |
| 8       | 36              | 34            | 94.44 | 2      | 5.54  |        |   |        |   |
| 9       | 36              | 31            | 86.11 | 5      | 13.88 |        |   |        |   |
| 10      | 36              | 31            | 86.11 | 4      | 11.1  |        |   |        |   |
| 11      | 36              | 35            | 97.22 | 1      | 2.77  |        |   |        |   |
| 12      | 36              | 29            | 86.11 | 4      | 11.1  |        |   |        |   |
| 13      | 36              | 36            | 100   |        |       |        |   |        |   |
| 14      | 36              | 36            | 100   |        |       |        |   |        |   |
| 15      | 36              | 35            | 97.22 | 1      | 2.77  |        |   |        |   |
| 16      | 36              | 36            | 100   |        |       |        |   |        |   |
| 17      | 36              | 36            | 100   |        |       |        |   |        |   |



**STUDENTS OVERALL EVALUATION OF THE PROGRAMME AND TEACHING**  
**QUESTIONNAIRE NO . 03**  
**Academic Year :2015-16**  
**Class:T.Y.B.Sc.**  
**Name of Teacher :Dr. Surve R.N.**

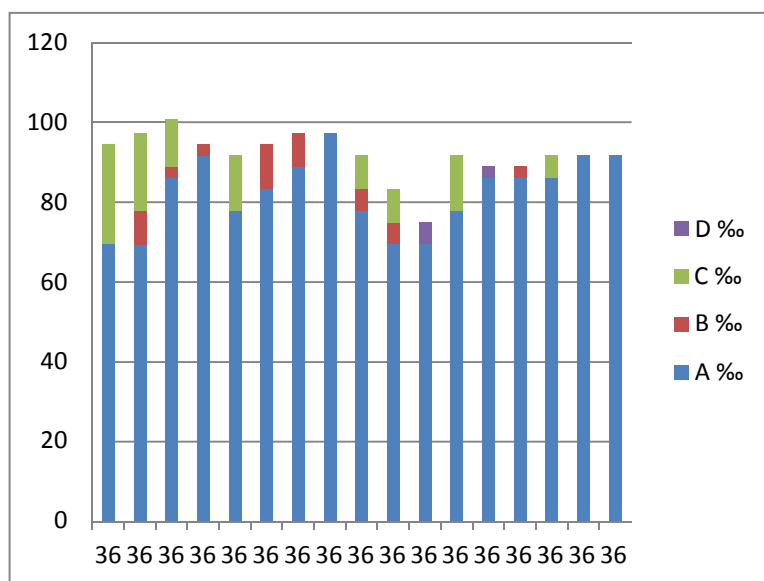
| Que No. | Total Responses | Answer Option |       |        |       |        |       |        |       |
|---------|-----------------|---------------|-------|--------|-------|--------|-------|--------|-------|
|         |                 | A             |       | B      |       | C      |       | D      |       |
|         |                 | Number        | %     | Number | %     | Number | %     | Number | %     |
| 1       | 36              | 23            | 63.38 |        |       | 9      | 25    | 4      | 11.11 |
| 2       | 36              | 23            | 63.38 |        |       | 11     | 30.55 | 1      | 2.77  |
| 3       | 36              | 28            | 77.77 | 6      | 8.33  | 2      | 5.54  |        |       |
| 4       | 36              | 30            | 83.33 | 1      | 2.77  |        |       |        |       |
| 5       | 36              | 25            | 69.44 |        |       | 9      | 25    |        |       |
| 6       | 36              | 33            | 91.66 | 1      | 2.77  | 1      | 2.77  | 1      | 2.77  |
| 7       | 36              | 26            | 72.22 | 4      | 11.11 |        |       | 1      | 2.77  |
| 8       | 36              | 29            | 80.55 | 1      | 2.77  | 6      | 16.66 |        |       |
| 9       | 36              | 30            | 83.33 | 3      | 8.33  |        |       | 3      | 8.33  |
| 10      | 36              | 20            | 55.55 | 16     | 44.44 |        |       |        |       |
| 11      | 36              | 35            | 97.22 | 1      | 2.77  |        |       |        |       |
| 12      | 36              | 30            | 83.33 | 2      | 5.55  | 3      | 8.33  |        |       |
| 13      | 36              | 32            | 88.88 | 2      | 5.55  |        |       | 1      | 2.77  |
| 14      | 36              | 34            | 94.44 | 1      | 2.77  |        |       |        |       |
| 15      | 36              | 32            | 88.88 | 3      | 8.33  |        |       |        |       |
| 16      | 36              | 24            | 66.66 | 1      | 2.77  |        |       | 2      | 5.55  |
| 17      | 36              | 32            | 88.88 | 1      | 2.77  |        |       |        |       |



STUDENTS OVERALL EVALUATION OF THE PROGRAMME AND TEACHING

QUESTIONNAIRE NO . 03 Academic Year :2015-16 Class:T.Y.B.Sc. Name of Teacher :Prof.C.D.Bhise

| Que No. | Total Responses | Answer Option |       |        |       |        |       |        |      |
|---------|-----------------|---------------|-------|--------|-------|--------|-------|--------|------|
|         |                 | A             |       | B      |       | C      |       | D      |      |
|         |                 | Number        | %     | Number | %     | Number | %     | Number | %    |
| 1       | 36              | 25            | 69.44 |        |       | 9      | 25    |        |      |
| 2       | 36              | 25            | 69.44 | 3      | 8.33  | 7      | 19.44 |        |      |
| 3       | 36              | 31            | 86.11 | 1      | 2.77  | 2      | 12    |        |      |
| 4       | 36              | 32            | 91.66 | 1      | 2.77  |        |       |        |      |
| 5       | 36              | 28            | 77.77 |        |       | 5      | 13.88 |        |      |
| 6       | 36              | 30            | 83.33 | 4      | 11.11 |        |       |        |      |
| 7       | 36              | 32            | 88.88 | 3      | 8.33  |        |       |        |      |
| 8       | 36              | 35            | 97.22 |        |       |        |       |        |      |
| 9       | 36              | 28            | 77.77 | 2      | 5.55  | 3      | 8.33  |        |      |
| 10      | 36              | 25            | 69.44 | 2      | 5.55  | 3      | 8.33  |        |      |
| 11      | 36              | 25            | 69.44 |        |       |        |       | 2      | 5.54 |
| 12      | 36              | 28            | 77.77 |        |       | 5      | 13.88 |        |      |
| 13      | 36              | 30            | 86.11 |        |       |        |       | 1      | 2.77 |
| 14      | 36              | 31            | 86.11 | 1      | 2.77  |        |       |        |      |
| 15      | 36              | 31            | 86.11 |        |       | 2      | 5.55  |        |      |
| 16      | 36              | 33            | 91.66 |        |       |        |       |        |      |
| 17      | 36              | 33            | 91.66 |        |       |        |       |        |      |



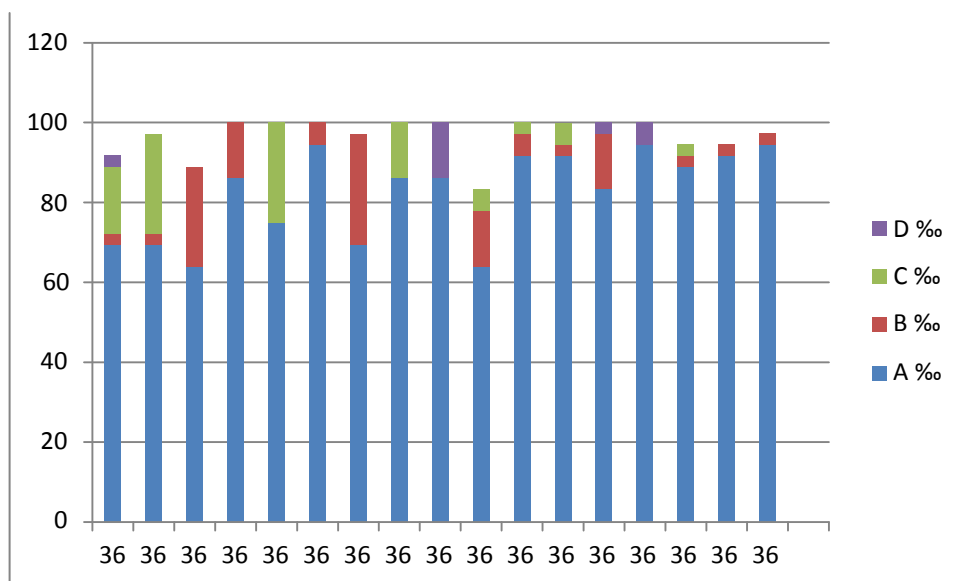
**STUDENTS OVERALL EVALUATION OF THE PROGRAMME AND TEACHING**

Academic Year :2015-16

QUESTIONNAIRE NO . 03

Class:T.Y.B.Sc. Name of Teacher :Dr. B.S.Bhosale

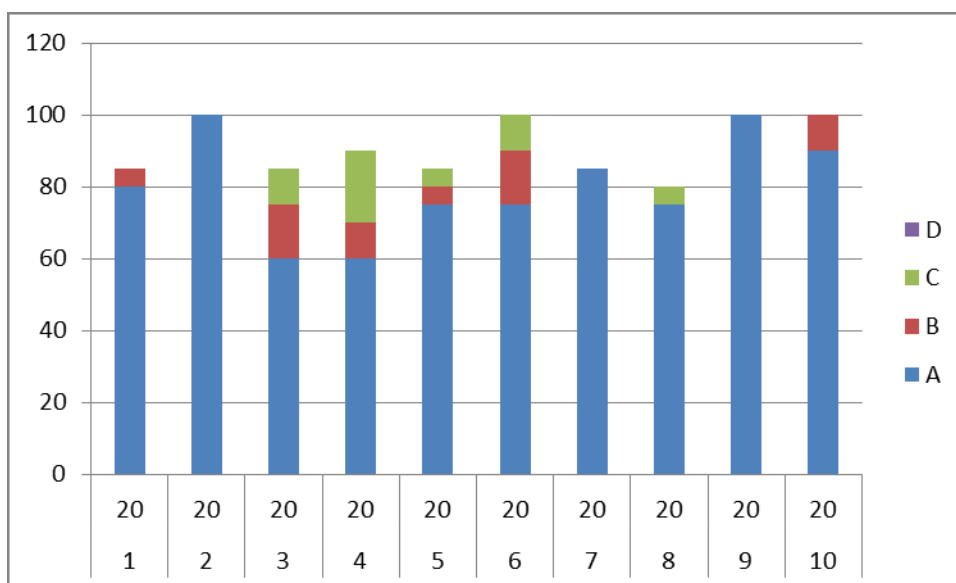
| Que No. | Total Responses | Answer Option |       |        |       |        |       |        |       |
|---------|-----------------|---------------|-------|--------|-------|--------|-------|--------|-------|
|         |                 | A             |       | B      |       | C      |       | D      |       |
|         |                 | Number        | %     | Number | %     | Number | %     | Number | %     |
| 1       | 36              | 25            | 69.44 | 1      | 2.77  | 6      | 16.66 | 1      | 2.77  |
| 2       | 36              | 25            | 69.44 | 1      | 2.77  | 9      | 25    |        |       |
| 3       | 36              | 23            | 63.88 | 9      | 25    |        |       |        |       |
| 4       | 36              | 31            | 86.11 | 5      | 13.88 |        |       |        |       |
| 5       | 36              | 27            | 75    |        |       | 9      | 25    |        |       |
| 6       | 36              | 34            | 94.44 | 2      | 5.55  |        |       |        |       |
| 7       | 36              | 25            | 69.44 | 10     | 27.77 |        |       |        |       |
| 8       | 36              | 31            | 86.11 |        |       | 5      | 13.88 |        |       |
| 9       | 36              | 31            | 86.11 |        |       |        |       | 5      | 13.88 |
| 10      | 36              | 23            | 63.88 | 5      | 13.88 | 2      | 5.55  |        |       |
| 11      | 36              | 33            | 91.66 | 2      | 5.55  | 1      | 2.77  |        |       |
| 12      | 36              | 33            | 91.66 | 1      | 2.77  | 2      | 5.55  |        |       |
| 13      | 36              | 30            | 83.33 | 5      | 13.88 |        |       | 1      | 2.77  |
| 14      | 36              | 34            | 94.44 |        |       |        |       | 2      | 5.55  |
| 15      | 36              | 31            | 88.88 | 2      | 2.77  | 2      | 2.77  |        |       |
| 16      | 36              | 33            | 91.66 | 2      | 2.77  |        |       |        |       |
| 17      | 36              | 34            | 94.44 | 2      | 2.77  |        |       |        |       |



## Analysis of Feedback of Parents

Academic Year 2015-16

| Que No. | Total Responses | Answer Option |     |        |    |        |    |        |   |
|---------|-----------------|---------------|-----|--------|----|--------|----|--------|---|
|         |                 | A             |     | B      |    | C      |    | D      |   |
|         |                 | Number        | %   | Number | %  | Number | %  | Number | % |
| 1       | 20              | 16            | 80  | 1      | 5  |        |    |        |   |
| 2       | 20              | 20            | 100 |        |    |        |    |        |   |
| 3       | 20              | 12            | 60  | 3      | 15 | 2      | 10 |        |   |
| 4       | 20              | 12            | 60  | 2      | 10 | 4      | 20 |        |   |
| 5       | 20              | 15            | 75  | 1      | 5  | 1      | 5  |        |   |
| 6       | 20              | 15            | 75  | 3      | 15 | 2      | 10 |        |   |
| 7       | 20              | 17            | 85  |        |    |        |    |        |   |
| 8       | 20              | 15            | 75  |        |    | 1      | 5  |        |   |
| 9       | 20              | 20            | 100 |        |    |        |    |        |   |
| 10      | 20              | 18            | 90  | 2      | 10 |        |    |        |   |



## Action Taken Report

## Department of Food Science and Nutrition

| Sr.No | Activity                                                                                                                                                                                             | Month/Date                                                                                                   | Topic                                                                                                                                      | Remark                                                                                                               |
|-------|------------------------------------------------------------------------------------------------------------------------------------------------------------------------------------------------------|--------------------------------------------------------------------------------------------------------------|--------------------------------------------------------------------------------------------------------------------------------------------|----------------------------------------------------------------------------------------------------------------------|
| 1.    | <b>Orientation</b>                                                                                                                                                                                   | 14 <sup>th</sup> July 2015                                                                                   | Food Science & Nutrition Career opportunities                                                                                              | First year students                                                                                                  |
| 2.    | <b>Breastfeeding promotion week</b><br><br>• <b>Competitions</b><br>Clay modelling<br><br>• <b>Workshop for pregnant &amp; lactating woman</b><br><br>Lecture<br><br>Demonstration<br><br>Exhibition | 1 <sup>st</sup> -7 <sup>th</sup> Aug 2015<br><br>7 <sup>th</sup> Aug 2015<br><br>4 <sup>th</sup> Aug 2015    | -<br><br><br><br>Importance of Breastfeeding<br><br>Diet for pregnant & lactating woman<br><br>Supplementary foods<br><br>Posters & charts | College level<br><br><br>Visit to Rural Hospital Akluj                                                               |
| 3.    | <b>Workshop</b>                                                                                                                                                                                      | 1 <sup>st</sup> -2 <sup>nd</sup> Aug 2015                                                                    | Cake & cake icing                                                                                                                          | First, Second & Third year students                                                                                  |
| 4.    | <b>Nutrition week</b><br><br>• <b>Competitions</b><br><br>• Recipe<br><br>• <b>Workshop for college students</b><br><br>Lecture<br><br><br><br><b>Exhibition</b>                                     | 1 <sup>st</sup> -7 <sup>th</sup> Sept 2015<br><br>5 <sup>th</sup> Sept 2015<br><br>3 <sup>rd</sup> Sept 2015 | Innovative recipes<br><br><br><br>Diet for adolescent girls<br><br>Nutritional problems during adolescence<br><br>Poster Presentation      | College level<br><br><br><br><br><br>students of 12 <sup>th</sup> Maharshi Shankarrao Mohite Prashala Yashavantnagar |
| 5.    | <b>Lecture</b>                                                                                                                                                                                       | 28 <sup>th</sup> Aug 2015                                                                                    | Research methodology                                                                                                                       | Third year students                                                                                                  |
| 6.    | <b>Workshop</b><br><br>• <b>Lecture</b>                                                                                                                                                              | 17 <sup>th</sup> Dec 2015                                                                                    | Food Art<br><br>PPT Video                                                                                                                  | All students of college                                                                                              |
| 7.    | <b>Competition on Food Art</b>                                                                                                                                                                       | 18 <sup>th</sup> Dec 2015                                                                                    | Food art                                                                                                                                   | All students of college                                                                                              |



|     |                                              |                                              |                                                                                                |                                                                        |
|-----|----------------------------------------------|----------------------------------------------|------------------------------------------------------------------------------------------------|------------------------------------------------------------------------|
| 8.  | <b>Food Stall<br/>Exhibition</b>             | 18 <sup>th</sup> & 19 <sup>th</sup> Dec 2015 | In college premises<br>Selling of Recipes<br>Posters , charts and<br>one day diet              | Visit of Junior<br>college students<br>to department<br>and Laboratory |
| 9.  | <b>Food stall</b>                            | 28 <sup>th</sup> Feb 2016                    | Khana Khajana                                                                                  | All students of<br>college                                             |
| 10. | <b>Distribution of<br/>Nutritious recipe</b> | 11 <sup>th</sup> March 2016                  | Nachani<br>shankarpale<br>Prepared and<br>distributed<br>nutritious recipe<br>under Internship | Children of<br>Anganwadi<br>Ganesh nagar<br>Akluj                      |

#### Departmental staff participation in other activities

| Sr.No | Activity       | Month/Date                     | Topic                         | Remark                                                                                                         |
|-------|----------------|--------------------------------|-------------------------------|----------------------------------------------------------------------------------------------------------------|
| 1.    | <b>Lecture</b> | 7 <sup>th</sup> September 2015 | Importance of hygiene         | 5 <sup>th</sup> - 8 <sup>th</sup> class student of<br>Maharshi Shankarrao<br>Mohite Prashala<br>Yashavantnagar |
| 2.    | <b>Lecture</b> | 14 <sup>th</sup> Feb 2016      | Diet of women during & Health | Mahila melawa organized<br>at Mandve                                                                           |

#### Department of Textile Science and Apparel Design

| Sr. No. | Activities                                                               | Date              | Class        |
|---------|--------------------------------------------------------------------------|-------------------|--------------|
| 01.     | Orientation to Textile& Clothing                                         | 14/07/2015        | F.Y. B.Sc.   |
| 02.     | Workshop on Eco friendly Garment using Natural dye (Flowers of Gulmohar) | 15/07/2015        | T.Y. B.Sc.   |
| 03.     | Workshop on various styles of printing                                   | 17/10/2015        | T.Y. B.Sc.   |
| 04.     | Exhibition                                                               | 19 – 20 Dec. 2015 |              |
| 05.     | Embroidery competition                                                   | 15/01/2015        | All students |
| 06.     | Workshop on fabric painting                                              | 16/01/2016        | F.Y. B.Sc.   |
| 07.     | Fashion show competition                                                 | 26/02/2016        | All students |
| 08.     | Presentation on various accessories for dresses                          | 03/03/2016        | F.Y. B.Sc.   |
| 09.     | Presentation on entrepreneurship related to Home Science                 | 23/03/2016        | T.Y. B.Sc.   |

### Human Development-Activities

| Sr. No. | Activity                                            | Month/Date                                                            | Topic                                                                                                | No. of Participant                                                 | Remark                                                                                                                                                                                                                    |
|---------|-----------------------------------------------------|-----------------------------------------------------------------------|------------------------------------------------------------------------------------------------------|--------------------------------------------------------------------|---------------------------------------------------------------------------------------------------------------------------------------------------------------------------------------------------------------------------|
| 1       | Workshop                                            | 14.07.2015                                                            | 'Premarital counseling'                                                                              | 41 S.Y. & 36 T.Y. students                                         | Expert -Alka Kakde Counsellor<br>Activities, games,dramatization and interactive seessions were conducted.                                                                                                                |
| 2       | Orientation to F.Y.                                 | 15.07.15                                                              | Introduction to F.Y.                                                                                 | 75 F.Y. students                                                   | Information about departmental staff, activities, scope etc.                                                                                                                                                              |
| 3       | Workshop                                            | 13.08.15                                                              | 'Am I ready for marriage?'                                                                           | 75 F.Y. students                                                   | Dr. Bhise C.D. :to create awareness amongst students about pre-marital preparation.                                                                                                                                       |
| 4       | Hasari Maifal                                       | 21.08.15                                                              | 'Stress relief'                                                                                      | All                                                                | N.Ashok - Producer, Director, Writer and Actor                                                                                                                                                                            |
| 5       | Lecture                                             | 25.08.2-15                                                            | 'Goal Setting'.                                                                                      | F.Y.75 students                                                    | Prof. Chankeshwara J.T.- PPT presentation                                                                                                                                                                                 |
| 6       | Poster Exhibition                                   | 25.08.15                                                              | 'Status of Women & Legal Protection.'                                                                | 36-T.Y. B.Sc.                                                      | Adv. Savita Solankar, Practicing Lawyer Malshiras.                                                                                                                                                                        |
| 7       | Guest Lecture                                       | 25.08.15                                                              | Status of Women & Legal Protection'                                                                  | 36-T.Y. & 75 F.Y B.Sc.                                             | Adv. Savita Solankar, Practicing Lawyer Malshiras.                                                                                                                                                                        |
| 8       | Seminar                                             | 21.09.2015                                                            | 'Career choice in Adolescence'.                                                                      | 75 F.Y. students                                                   | Prof. Chankeshwara J.T.                                                                                                                                                                                                   |
| 9       | Admission Campaign                                  | of December 2015                                                      | PPT presentations at various Jr. Colleges in and around the town                                     | Tandulwadi,Shripur,Piliv, Borgaon, Maloli,Mahood & Local colleges. | Dr. Bhise C.D. & Prof. Nimbhorker R.R.                                                                                                                                                                                    |
| 10      | Exhibition                                          | 18 <sup>th</sup> ,19 <sup>th</sup> and 21 <sup>st</sup> December 2015 | Information about Dept. subjects and core content.                                                   | 12 <sup>th</sup> students & parents                                | Models , posters , charts, practical work display and explanation by students and staff.                                                                                                                                  |
| 11      | Communities reach prog. :Guiding speech & Role Play | 11.01.2016                                                            | Speech: Health care during adolescence'<br><br>A role play: on 'Girls education : Savitribai's boon' | 100 teenage girls, mothers & AWWs.                                 | Savitribai Phule Jayanti Week a programme was conducted in Raut Nagar, ICDS Anganwadi center, Datta Nagar.:<br><br>Speech:Dr. C. D. Bhise.<br><br>Role play:T.Y. student Miss. Dhanashri Shinde & Miss. Bhagyashri Keche. |
| 12      | Guest Lecture and Poster Exhibition                 | 18.02.16                                                              | 'Exceptional children and counseling'                                                                | 36 T.Y. students                                                   | Prof. Chankeshwara J.T.                                                                                                                                                                                                   |
| 13      | Community reach prog.Speech in Mahila Melawa        | 14.02.16                                                              | 'Importance of women education'.                                                                     | About 100-150 women and teenage girls                              | Mandwe, Mahila Melawa organized jointly by Ranjeet Patsansta and Smt. Ratnaprabhadevi Mohite Patil Vidyalaya .                                                                                                            |
| 14      | Community reach prog.:Exhibition & Guiding lecture  | 08.03.16                                                              | Speech: '21 <sup>st</sup> century women & challenges'<br><br>Poster : Women Empowerment              | Poster exhibition : was arranged by T.Y.B.Sc.(HECS) Hostel girls   | Smt. Ratnaprabhadevi Mohite-Patil girls hostel<br><br>Speech:Dr. C. D. Bhise.<br><br>Poster exhibition : was arranged                                                                                                     |

|    |                               |                                                       |                                            |                                              |                                                                                                       |
|----|-------------------------------|-------------------------------------------------------|--------------------------------------------|----------------------------------------------|-------------------------------------------------------------------------------------------------------|
|    |                               |                                                       |                                            | About 400 hostel girls                       | by T. Y. B.Sc. (HECS) Hostel girls                                                                    |
| 15 | Community reach prog.:Speech: | On the eve of International Women's Day on 08.03.2016 | 'Role of students eradicating illiteracy'. | Near about 600 students from st. Vth to Xth. | Inner Wheel Club Branch Akluj for the students of Jijamata Kanya Prashala.<br>Speech :Dr. Bhise C. D. |
| 16 | Workshop                      | 30.03.2016                                            | Emotional Intelligence : A key to success  | 41 S.Y. students                             | Expert :Dr. Bhise C. D.                                                                               |

### Department of Computer

| Sr. No. | Activities                              | Date       | Class                    |
|---------|-----------------------------------------|------------|--------------------------|
| 01.     | Orientation to Introduction to Computer | 05/03/2016 | F.Y. B.Sc.<br>S.Y. B.Sc. |
| 02.     | Orientation to Fundamentals of computer | 10/04/2016 | F.Y. B.Sc.<br>S.Y. B.Sc. |
| 03.     | Workshop on Introduction to M.S.- Word  | 15/05/2016 | F.Y. B.Sc.<br>S.Y. B.Sc. |

### Department of Extension Education

| Sr. No. | Activities                         | Date              | Class                       |
|---------|------------------------------------|-------------------|-----------------------------|
| 01.     | Orientation to Extension Education | 14/07/2015        | F.Y. B.Sc.                  |
| 02.     | Exhibition                         | 19 – 20 Dec. 2015 | HSC students of nearby area |

### Department of Library

| Sr. No. | Activities             | Date              | Class                       |
|---------|------------------------|-------------------|-----------------------------|
| 01.     | Orientation to Library | 14/07/2015        | F.Y. B.Sc.                  |
| 02.     | Librarian's Day        | 05/09/2016        | All students                |
| 03.     | Vachan Prerana Divas   | 15/10/2016        | All Students                |
| 04.     | Exhibition             | 19 – 20 Dec. 2015 | HSC students of nearby area |

**Department of Sports**

| Sr. No. | Activities            | Month             | Remark                        |
|---------|-----------------------|-------------------|-------------------------------|
| 01.     | Orientation to Sports | 14/07/2015        | F.Y. B.Sc.                    |
| 02.     | Kho- Kho              | September         | Intercollegiate participation |
| 03.     | Langadi               | September         | Intercollegiate participation |
| 04.     | Yoga                  | August            | Intercollegiate participation |
| 05.     | Athletics             | October           | General Championship          |
| 06.     | Athletics             | October           | Individual Championship       |
| 07.     | Minithon Road race    | November          | II,IV,VI,VII place            |
| 08.     | Exhibition            | 19 – 20 Dec. 2015 | HSC students of nearby Area   |
| 09.     | Chess                 | January 2016      | Intercollegiate participation |
| 10.     | S.P.M. sports         | January 2016      | General Championship          |

**NSS Department Regular Activities**

| Sr.No. | Activities                                    | Date       | Class          |
|--------|-----------------------------------------------|------------|----------------|
| 01.    | Celebration of International Yoga Divas       | 22/06/2015 | All Classes    |
| 02.    | University Foundation Day                     | 05/07/2015 | All Classes    |
| 03.    | Enrollment of NSS Volunteers                  | 17/7/2015  | F.Y. & S.Y.    |
| 04.    | Orientation to NSS                            | 21/7/2015  | F.Y. & S.Y.    |
| 05.    | Campus Cleanliness                            | 15/08/2016 | F.Y. & S.Y.    |
| 06.    | Hasari Maifil                                 | 20/08/2015 | All Students   |
| 07.    | Cleanliness of Play Ground                    | 22/08/2015 | F.Y. & S.Y.    |
| 08.    | Teacher's Day Celebration                     | 05/09/2015 | All Classes    |
| 09.    | Short film Presentation on Water Conservation | 11/09/2015 | F. Y. & S.Y.   |
| 10.    | Guest Lecture                                 | 15/9/2015  | NSS volunteers |
| 11.    | Poster Making Competition                     | 04/09/2015 | F.Y. & S.Y.    |

|     |                                        |            |                |
|-----|----------------------------------------|------------|----------------|
| 12. | Survey                                 | 20/09/2015 | F.Y. &S.Y.     |
| 13. | Temple waste management                | 04/09/2015 | S.Y.           |
| 14. | Slogan Making Competition              | 18/09/2015 | F.Y. & S.Y.    |
| 15. | Cleanliness of College campus          | 12/09/2015 | F.Y. & S.Y.    |
| 16. | Mahatma Gandhi Jayanti Celebration     | 02/10/2015 | All Students   |
| 17. | Shramdan                               | 02/10/2015 | NSS Volunteers |
| 18. | Wild life week celebration             | 08/02/2015 | All students   |
| 19. | Medical Check - up                     | 17/01/2016 | All Students   |
| 20. | Participation in pulse polio programme | 21/01/2016 | NSS volunteers |
| 21. | Youth Day celebration                  | 12/01/2016 | All students   |

#### Cultural Department

| Sr.no | Date             | Programme                                                 |
|-------|------------------|-----------------------------------------------------------|
| 1     | 28 June 2015     | Death Anniversary of Smt. Ratnaprabhadevi Mohite patil    |
| 2     | 05July 2015      | S.N.D.T. Foundation day                                   |
| 3     | 25July 2015      | Birth Anniversary of Smt. Ratnaprabhadevi Mohite patil    |
| 4     | 6August2015      | Wel Come Party                                            |
| 5     | 22 August 2015   | Yuva Mohotsav                                             |
| 6     | 5 September2015  | Teacher day                                               |
| 7     | 15October2015    | Wachan Prerna Day                                         |
| 8     | 1 December2015   | Savidhan day                                              |
| 9     | 3 January 2016   | Birth Anniversary of Savitribai Phule                     |
| 10    | 14 January 2016  | Birth Anniversary of Shankarrao Mohite Patil              |
| 11    | 11 February 2016 | Death Anniversary of Shankarrao Mohite Patil Mohite patil |
| 12    | 12 February 2016 | Essay Competition                                         |
| 13    | 21 February 2016 | Matrubhasha Day                                           |
| 14    | 23 February 2016 | Speech Competition                                        |
| 15    | 27 February 2016 | Ratnai Mohotsav (Annual Gathering)                        |
| 16    | 2 March2016      | Drawing Competition                                       |
| 17    | 8 March 2016     | World Women's Day                                         |
| 18    | 7 April 2016     | Farewell - Ceremony                                       |

#### Department of Family Resource Management

| Sr.No | Activity                            | Month/Date                                        | Topic                                                       | Remark                                     |
|-------|-------------------------------------|---------------------------------------------------|-------------------------------------------------------------|--------------------------------------------|
| 1.    | <b>Consumer Awareness Programme</b> | 2 <sup>nd</sup> January 2016                      | Consumer problems , Consumer forum and Redressal procedures | All Indian Consumer Forum Malshiras branch |
| 2.    | <b>Exhibition Stall and selling</b> | 18 <sup>th</sup> & 19 <sup>th</sup> December 2015 | Hand made articles                                          | College premises                           |



**SHIKSHAN PRASARK MANDAL'S**  
**SMT. RATNAPRABHADEVI MOHITE-PATIL COLLEGE OF HOME SCIENCE FOR WOMEN, AKLUJ,**  
**TAL.MALSHIRAS, DIST: SOLAPUR**  
**ACADEMIC CALENDAR: 2016-2017**

| DAY S | JUNE | JULY | AUGUST                                                                                   | SEPTEMBER                                                                     | OCTOBER | NOVEMBER | DECEMBER                                 | JANUARY                                 | FEBRUARY                                                 | MARCH | APRIL | MAY | DAY S |
|-------|------|------|------------------------------------------------------------------------------------------|-------------------------------------------------------------------------------|---------|----------|------------------------------------------|-----------------------------------------|----------------------------------------------------------|-------|-------|-----|-------|
| SUN   |      |      |                                                                                          |                                                                               |         |          |                                          | 1                                       |                                                          |       |       |     | SUN   |
| MON   |      |      | 1 FSN:BREAST FEEDING PROMOTION WEEK : WORKSHOP,LECTURES ,DEMOS,EXHIBITION & SKIT/AWC/PHC |                                                                               |         |          |                                          | 2                                       |                                                          |       |       | 1   | MON   |
| TUE   |      |      | 2                                                                                        |                                                                               |         | 1        |                                          | 3SAVITRIBAI PHULE JAYANTI               |                                                          |       |       | 2   | TUE   |
| WEB   | 1    |      | 3TS: WORKSHOP ON BLOCK PRINTING                                                          |                                                                               |         | 2        |                                          | 4                                       | 1                                                        | 1     |       | 3   | WEB   |
| THU   | 2    |      | 4                                                                                        | 1 FSN:NUTRITION WEEK: WORKSHOP,LECTURES ,DEMOS,EXHIBITION & SKIT RECPIE COMP. |         | 3        | 1NSS: DOCUMENTARY SHOW ON AIDS AWARENESS | 5                                       | 2 COMP: INTR. TO HARDWARE, SOFTWARE AND OPERATING SYSTEM | 2     |       | 4   | THU   |
| FRI   | 3    | 1    | 5                                                                                        | 2                                                                             |         | 4        | 2                                        | 6EXT : WORKSHOP – USE OF PRINT MEDIA FY | 3                                                        | 3     |       | 5   | FRI   |

| DAY S | JUNE | JULY                                                  | AUGUST                                    | SEPTEMBER                                                            | OCTOBER                                                                                   | NOVEMBER                                       | DECEMBER                                                      | JANUARY                                               | FEBRUARY                   | MARCH                                                                           | APRIL                                                                | MAY | DAY S |
|-------|------|-------------------------------------------------------|-------------------------------------------|----------------------------------------------------------------------|-------------------------------------------------------------------------------------------|------------------------------------------------|---------------------------------------------------------------|-------------------------------------------------------|----------------------------|---------------------------------------------------------------------------------|----------------------------------------------------------------------|-----|-------|
| SAT   | 4    | 2                                                     | 6                                         | 3                                                                    | 1NSS:WORKSH<br>OP ON FIRST<br>AID                                                         | 5                                              | 3                                                             | 7                                                     | 4                          | 4HD: VISIT<br>TO<br>COUNSELI<br>NG CELL TY                                      | 1FARE<br>WELL<br>CEREM<br>ONEY                                       | 6   | SAT   |
| SUN   | 5    | 3                                                     | 7                                         | 4                                                                    | 2NSS : GANDHI<br>JAYANTI<br>LALBAHADUR<br>SHASHTRI<br>JAYANTI                             | 6                                              | 4                                                             | 8                                                     | 5                          | 5                                                                               | 2COMP:<br>INTRO.<br>OF<br>COMP.<br>LANGU<br>AGE                      | 7   | SUN   |
| MON   | 6    | 4SPORTS:<br>GUEST<br>LECTURE –<br>PHYSICAL<br>FITNESS | 8                                         | 5NSS:TEACHER<br>'S DAY<br>CELEBERATION                               | 3SCI:QUIZ,<br>POSTER AND<br>SLOGAN<br>COMPETITIO<br>NS ON WILD<br>LIFE AND<br>ENV. ISSUES | 7                                              | 5NSS: GUEST<br>LECTURE ON<br>WOMEN<br>EMPOWERMENT             | 9TEXT.SCI: VISIT<br>TO GARMENT<br>UNIT                | 6                          | 6COMP:<br>INTR. TO<br>NETWORK                                                   | 3COMP:<br>INFORM<br>ATION<br>OF<br>INFORM<br>ATION<br>TECHNO<br>LOGY | 8   | MON   |
| TUE   | 7    | 5                                                     | 9FRM:<br>WORKSHOP ON<br>CLAY<br>MODELLING | 6HD:GUEST<br>LECTURE<br>&EXHIBITION :<br>LEGAL STATUS<br>OF WOMEN TY | 4                                                                                         | 8                                              | 6PRESENTATION<br>ON RECENT<br>TRENDS IN<br>EMBRIODERY<br>F.Y. | 10                                                    | 7                          | 7                                                                               | 4                                                                    | 9   | TUE   |
| WEB   | 8    | 6                                                     | 10NSS<br>:ORIENTATION<br>BY GUEST         | 7<br>SCI:DISTRIBU<br>TION OF<br>PROJECTS TO<br>F.Y.<br>STUDENTS      | 5NSS<br>:PRESENTATIO<br>N ON WATER<br>CONSERVATIO<br>N                                    | 9                                              | 7                                                             | 11<br>SCI:MOCK<br>INTERVIEWS                          | 8                          | 8NSS/CUL<br>:INTERNA<br>TIONAL<br>WOMEN'S<br>DAY:<br>EXHIBITIO<br>N CUM<br>SALE | 5                                                                    | 10  | WEB   |
| THU   | 9    | 7<br>ORIENTATION<br>TO F.Y.                           | 11COMP: INT.<br>TO COMPUTER               | 8NSS:LCD<br>PRES. ON<br>LITERACY                                     | 6                                                                                         | 10                                             | 8                                                             | 12NSS: YOUTH<br>DAY<br>CELEBERATION/R<br>AJMATA JIJAU | 9TEXT.SC.:<br>FASHION SHOW | 9                                                                               | 6                                                                    | 11  | THU   |
| FRI   | 10   | 8                                                     | 12<br>SCI:WORKSHOP                        | 9TS: TRAINING<br>ON MAKING<br>ARTICLES                               | 7FSN:<br>WORKSHOP<br>ON SANDWICH                                                          | 11 SPORT:ORG. OF<br>ATHELETICS<br>UNI.COACHING | 9<br>SCI:BASIC                                                | 13<br>SPORTS:INTERCLA                                 | 10SPORTS:<br>INTERCLASS    | 10                                                                              | 7                                                                    | 12  | FRI   |

| DAY S | JUNE                                                                                                                                                               | JULY                                                       | AUGUST                    | SEPTEMBER                  | OCTOBER                                      | NOVEMBER                          | DECEMBER                                    | JANUARY                                               | FEBRUARY                                                       | MARCH | APRIL                     | MAY | DAY S |
|-------|--------------------------------------------------------------------------------------------------------------------------------------------------------------------|------------------------------------------------------------|---------------------------|----------------------------|----------------------------------------------|-----------------------------------|---------------------------------------------|-------------------------------------------------------|----------------------------------------------------------------|-------|---------------------------|-----|-------|
|       |                                                                                                                                                                    | SCI:MEDICAL CHECK-UP FOR F.Y.                              | ON USE OF ICT IN STUDIES  | USING PRINTING TECHNIQUE   | MAKING                                       | CAMP FOR ASHWAMEDH                | MEDICAL CHECK-UP CAMP BY F.Y.B.SC. STUDENTS | SS COMP                                               | COMP.                                                          |       |                           |     |       |
| SAT   | 11                                                                                                                                                                 | 9TS: WORKSHOP IN NATURAL DYE                               | 13                        | 10                         | 8SPORTS: ORG. OF INTERCOLLEGIATE TOURNAMENTS | 12COMP: MS-POWERPOINT             | 10                                          | 14SAHAKAR MAHARSHI SHANKARRAO MOHITEPATIL BIRTH ANNI. | 11DEATH ANNIVERSERY OF SAHAKAR MAHARSHI SHANKARRAO MOHITEPATIL | 11    | 8                         | 13  | SAT   |
| SUN   | 12                                                                                                                                                                 | 10                                                         | 14                        | 11                         | 9                                            | 13                                | 11                                          | 15                                                    | 12                                                             | 12    | 9                         | 14  | SUN   |
| MON   | 13 COMMENCEMENT OF SEM I,III & V                                                                                                                                   | 11<br>WORLD POPULATION DAY : ELOCUTION<br>NSS POSTER COMP. | 15INDEPENDANCE DAY        | 12                         | 10<br>SCI:MEDICAL CHECKUP CAMP               | 14BALDIN                          | 12                                          | 16                                                    | 13                                                             | 13    | 10<br>EXAM:TERM END EXAMS | 15  | MON   |
| TUE   | 14 IQAC<br>SWOC PROSPECTUS<br>ADMISSION<br>ACADEMIC CALENDAR<br>TEACHERS DIARY AND TIME TABLE<br>COLLEGE INTERNAL AND UNIVERSITY EXAM EXAM: DECLARATION OF RESULTS | 12FSN: FOUNDATION COURSE FOR F.Y.                          | 16NSS:COMP: ESSAY WRITING | 13                         | 11                                           | 15                                | 13 NSS:SPECIAL CAMP                         | 17                                                    | 14                                                             | 14    | 11                        | 16  | TUE   |
| WEB   | 15 STAFF SECRETARY AND STAFF ACADEMY<br>UGC PROPOSAL AND CIRCULAR<br>UNIVERSITY AFFILIATION                                                                        | 13TS: PRES. ON VARIOUS STYLES OF FABRIC ORNAMENTATIO       | 17                        | 14 COMP: INTR. TO INTERNET | 12                                           | 16<br>SCI:WORKSHOP ON SOFT SKILLS | 14                                          | 18 HD: WORKSHOP ON EMOTIONAL INTELLIGENCE             | 15 RATNAI MAHOTSAV                                             | 15    | 12                        | 17  | WEB   |

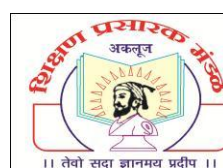


| <b>DAY S</b> | <b>JUNE</b>                                                                                                                                                                           | <b>JULY</b> | <b>AUGUST</b>                                                            | <b>SEPTEMBER</b>                                      | <b>OCTOBER</b> | <b>NOVEMBER</b> | <b>DECEMBER</b>                                                     | <b>JANUARY</b>                                     | <b>FEBRUARY</b>                   | <b>MARCH</b> | <b>APRIL</b> | <b>MAY</b> | <b>DAY S</b> |
|--------------|---------------------------------------------------------------------------------------------------------------------------------------------------------------------------------------|-------------|--------------------------------------------------------------------------|-------------------------------------------------------|----------------|-----------------|---------------------------------------------------------------------|----------------------------------------------------|-----------------------------------|--------------|--------------|------------|--------------|
|              | B.C.CELL& STANDING<br>STUDENT'S COUNCIL<br>COMPETITIVE EXAM,<br>PLACEMENT CELL AND<br>ENTREPRENEURSHIP<br>DEVELOPMENT                                                                 |             |                                                                          |                                                       |                |                 |                                                                     |                                                    |                                   |              |              |            |              |
| <b>THU</b>   | <b>16</b> PUBLICITY STUDENT<br>WALLPAPER AND<br>EXTENSION ACTIVITY<br><br>RESEARCH<br><br>ANTI RAGGING COLLEGE<br><br>MAGAZINE PARENT<br><br>AND ALUMNAE<br>ASSOCIATION               | <b>14</b>   | <b>18</b>                                                                | <b>15</b> NSS:<br>SEMINAR ON<br>STRESS<br>MANAGEMENT  | <b>13</b>      | <b>17</b>       | <b>15</b> TS:PRESENTAT<br>ION ON<br>VARIOUS FABRIC<br>TEXTURES F.Y. | <b>19</b> FRM:<br>CONSUMER<br>AWARENESS<br>PROGRAM | <b>16</b>                         | <b>16</b>    | <b>13</b>    | <b>18</b>  | <b>THU</b>   |
| <b>FRI</b>   | <b>17</b> TEACHING AIDS<br><br>DISCIPLINE<br><br>CAMPUS MAINTENANCE<br><br>LADIES ROOM<br>ADMINISTRATION<br><br>PLANNING<br><br>HEALTH CENTER                                         | <b>15</b>   | <b>19</b> TS: TRAINING<br>ON HAND<br>EMBROIDARY TO<br>SELF HELP<br>GROUP | <b>16</b> TS: VISIT TO<br>DYEING AND<br>PRINTING UNIT | <b>14</b>      | <b>18</b>       | <b>16</b>                                                           | <b>20</b> FSN:<br>COMMUNITY<br>NUTRITION<br>PROG.  | <b>17</b> HD: GUEST<br>LECTURE TY | <b>17</b>    | <b>14</b>    | <b>19</b>  | <b>FRI</b>   |
| <b>SAT</b>   | <b>18</b> FEED BACK<br><br>COMPUTER EDUCATION<br>AND WEBSITE UP<br>GRADATION<br><br>REMEDIAL COACHING<br><br>STOCK MAINTENANCE<br><br>LIBRARY ADVISORY<br><br>Y.C.M.O.U. STUDY CENTRE | <b>16</b>   | <b>20</b>                                                                | <b>17</b> FRM: VISIT<br>TO HOTEL                      | <b>15</b>      | <b>19</b>       | <b>17</b> COMP:MS-<br>EXCEL                                         | <b>21</b>                                          | <b>18</b>                         | <b>18</b>    | <b>15</b>    | <b>20</b>  | <b>SAT</b>   |

| DAY S | JUNE                                                                                                                           | JULY                                                         | AUGUST                                                              | SEPTEMBER                                                                                                             | OCTOBER                                              | NOVEMBER                                 | DECEMBER                                                            | JANUARY                  | FEBRUARY                                                         | MARCH                      | APRIL                                                         | MAY | DAY S |
|-------|--------------------------------------------------------------------------------------------------------------------------------|--------------------------------------------------------------|---------------------------------------------------------------------|-----------------------------------------------------------------------------------------------------------------------|------------------------------------------------------|------------------------------------------|---------------------------------------------------------------------|--------------------------|------------------------------------------------------------------|----------------------------|---------------------------------------------------------------|-----|-------|
| SUN   | 19                                                                                                                             | 17                                                           | 21                                                                  | 18                                                                                                                    | 16                                                   | 20                                       | 18                                                                  | 22                       | 19                                                               | 19                         | 16                                                            | 21  | SUN   |
| MON   | 20 GYMKHANA AND SPORTS<br>COUNSELING CELL<br>SEXUAL HARASSMENT PREVENTION<br>CULTURAL<br>N.S.S. ADVISORY AND WORKING<br>HOSTEL | 18 ORIENTATION TO NSS<br>VOLENTEERS                          | 22                                                                  | 19 SCI:HB<br>ESTIMATION<br>CAMP &<br>SEMINAR ON<br>SIMPLE<br>RECIPES TO<br>INCREASE HB<br>LEVELS IN<br>BLOOD          | 17 TERM END<br>EXAMS                                 | 21                                       | 19 AUDIO VISUAL<br>SHOWS<br>REGARDING<br>SOFT SKILLS<br>DEVELOPMENT | 23COMP: GUEST<br>LECTURE | 20                                                               | 20                         | 17                                                            | 22  | MON   |
| TUE   | 21 GRIEVANCE REDRESSAL<br>CELL<br>HOME SCIENCE<br>ASSOCIATION                                                                  | 19 GURUPURNIM<br>A<br>CELEBERATION                           | 23 YOUTH<br>FESTIVAL                                                | 20EXT:<br>WORKSHOP<br>ON HANDLING<br>E- MEDIA                                                                         | 18FRM: VISIT<br>TO SMALL<br>SCALE<br>INDUSTRY        | 22HD : PARENT<br>EDUCATION<br>PROGRAM SY | 20NSS: SKILL<br>DEVELOPMENT<br>PROGRAM                              | 24                       | 21FRM: GUEST<br>LECTURE ON<br>ACCOUNT<br>KEEPING TY              | 21                         | 18BIRT<br>H<br>ANNIVE<br>RSERY<br>OF<br>MAHAR<br>SHI<br>KARVE | 23  | TUE   |
| WEB   | 22                                                                                                                             | 20 SCI:MARKET<br>SURVEY &<br>USED<br>MEDICINES<br>COLLECTION | 24                                                                  | 21                                                                                                                    | 19TS:<br>PRESENTATIO<br>N ON FABRIC<br>PAINTING F.Y. | 23                                       | 21EXHIBITION                                                        | 25                       | 22                                                               | 22FSN:GUE<br>ST<br>LECTURE | 19                                                            | 24  | WEB   |
| THU   | 23                                                                                                                             | 21 TS:<br>WORKSHOP<br>ON MACHINE<br>EMBRIODARY               | 25NSS : GUEST<br>LECTURE ON<br>WOMENS<br>HEALTH &<br>RELATED ISSUES | 22HD:SEMINA<br>R AND DEBATE<br>COMP (HOME<br>ARRANGEMEN<br>T FOR<br>ELDERLY/IS<br>OLD AGE<br>HOME<br>NECESSARY?<br>FY | 20                                                   | 24                                       | 22 COMP:<br>WORKING IN<br>MS-OFFICE;MS-<br>WORD                     | 26 REPUBLIC DAY          | 23FSN: GUEST<br>LECTURE: ROLE<br>OF ICDS IN<br>COMMUNITY<br>NUT. | 23                         | 20                                                            | 25  | THU   |

| DAY S | JUNE                                                      | JULY                                                                    | AUGUST                                       | SEPTEMBER              | OCTOBER | NOVEMBER                               | DECEMBER                          | JANUARY | FEBRUARY    | MARCH | APRIL | MAY | DAY S |
|-------|-----------------------------------------------------------|-------------------------------------------------------------------------|----------------------------------------------|------------------------|---------|----------------------------------------|-----------------------------------|---------|-------------|-------|-------|-----|-------|
| FRI   | 24                                                        | 22COMP: INT. OF ONLINE COLLEGE WEBSITE                                  | 26                                           | 23                     | 21      | 25NSS: FILM SHOW ON UNITY IN DIVERSITY | 23                                | 27      | 24FSN: ISIT | 24    | 21    | 26  | FRI   |
| SAT   | 25                                                        |                                                                         | 27                                           | 24NSS DAY CELEBERATION | 22      | 26                                     | 24                                | 28      | 25          | 25    | 22    | 27  | SAT   |
| SUN   | 26                                                        |                                                                         | 28                                           | 25                     | 23      | 27                                     | 25                                | 29      | 26          | 26    | 23    | 28  | SUN   |
| MON   | 27                                                        | 25 WELCOME PARTY,BIRTH ANNIVERSERY OF SMT. RATNAPRABH ADEVI MOHITEPATIL | 29 HD : WORKSHOP : PREMARITAL COUNSELLING SY | 26                     | 24      | 28                                     | 26                                | 30      | 27          | 27    | 24    | 29  | MON   |
| TUE   | 28 DEATH. ANNIVERSARY OF SMT. RATNAPRABHDEVI MOHITE PATIL | 26                                                                      | 30                                           | 27                     | 25      | 29                                     | 27EXAM: DECLARATION OF FY RESULTS | 31      | 28          | 28    | 25    | 30  | TUE   |
| WEB   | 29                                                        | 27                                                                      | 31                                           | 28                     | 26      | 30                                     | 28                                |         |             | 29    | 26    | 31  | WEB   |
| THU   | 30                                                        | 28                                                                      |                                              | 29                     | 27      |                                        | 29                                |         |             | 30    | 27    |     | THU   |
| FRI   |                                                           | 29                                                                      |                                              | 30                     | 28      |                                        | 30                                |         |             | 31    | 28    |     | FRI   |
| SAT   |                                                           | 30                                                                      |                                              |                        | 29      |                                        | 31                                |         |             |       | 29    |     | SAT   |
| SUN   |                                                           | 31                                                                      |                                              |                        | 30      |                                        |                                   |         |             |       | 30    |     | SUN   |
| MON   |                                                           |                                                                         |                                              |                        | 31      |                                        |                                   |         |             |       |       |     | MON   |

## Annexure I



**SHIKSHAN PRASARK MANDAL'S**  
**SMT. RATNAPRABHADEVI MOHITE-PATIL COLLEGE OF HOME SCIENCE FOR WOMEN, AKLUJ,**  
**TAL.MALSHIRAS, DIST: SOLAPUR**  
**ACADEMIC CALENDAR: 2015-2016**



| DAYS | JUNE                | JULY                                                            | AUGUST                                                                                | SEPTEMBER                                                                                                        | OCTOBER                                                         | NOVEMBER | DECEMBER                               | JANUARY                                 | FEBRUARY                         | MARCH                                                   | APRIL                                                            | MAY | DAYS |
|------|---------------------|-----------------------------------------------------------------|---------------------------------------------------------------------------------------|------------------------------------------------------------------------------------------------------------------|-----------------------------------------------------------------|----------|----------------------------------------|-----------------------------------------|----------------------------------|---------------------------------------------------------|------------------------------------------------------------------|-----|------|
| SUN  |                     |                                                                 |                                                                                       |                                                                                                                  |                                                                 | 1        |                                        |                                         |                                  |                                                         |                                                                  |     | SUN  |
| MON  | 1 ADMISSION PROCESS |                                                                 |                                                                                       |                                                                                                                  |                                                                 | 2        |                                        |                                         | 1NSS: Medicine Collection        | 1                                                       |                                                                  |     | MON  |
| TUE  | 2                   |                                                                 |                                                                                       | 1                                                                                                                |                                                                 | 3        | 1Comp: Poster making on AIDS : NSS     |                                         | 2                                | 2                                                       |                                                                  |     | TUE  |
| WED  | 3                   | 1                                                               |                                                                                       | 2 NUTRITION WEEK: RECPIE COMP;VISIT                                                                              |                                                                 | 4        | 2                                      |                                         | 3                                | 3                                                       |                                                                  |     | WED  |
| THU  | 4                   | 2 Tree plantation: NSS                                          |                                                                                       | 3 Clay Modeling: FSN<br>Workshop on Bakery products : FSN                                                        | 1                                                               | 5        | 3 Study tour : EXTENSION               |                                         | 4                                | 4                                                       |                                                                  |     | THU  |
| FRI  | 5                   | 3                                                               |                                                                                       | 4                                                                                                                | 2 GANDHI JAYANTI                                                | 6        | 4 Workshop : EXT EDU                   | 1                                       | 5                                | 5                                                       | 1                                                                |     | FRI  |
| SAT  | 6                   | 4 Presention. on Varius Styles of Fabric Ornamentation: TEXTILE | 1 Breast Feeding Promotion Week: FSN<br>Collaborative Activities with dept Of SCIENCE | 5 TEACHER'S DAY :CULTURAL<br>Innovative Recipe Comp: FSN<br>Elocution Comp: NSS                                  | 3                                                               | 7        | 5 Film Show on Unity in Diversity: NSS | 2                                       | 6 Workshop on self defense : NSS | 6 Presention. On various trends in Accessories: TEXTILE | 2                                                                |     | SAT  |
| SUN  | 7                   | 5                                                               | 2                                                                                     | 6                                                                                                                | 4                                                               | 8        | 6                                      | 3 SAVITRIBAI PHULE JAYANTI              | 7                                | 7                                                       | 3                                                                | 1   | SUN  |
| MON  | 8                   | 6                                                               | 3.                                                                                    | 7 Hb estimation camp : SCIENCE<br>Demo: Creating Awareness Through First Aid : NSS<br>Seminar : Career Choice in | 5 Workshop : Fabric Painting : TEXTILE<br>Comp : Quiz : SCIENCE | 9        | 7 Workshop : Soft Skill Dev. : SCIENCE | 4 SAVITRIBAI PHULE JAYANTI Celebrations | 8                                | 8 INTERNATIONAL WOMEN'S DAY: EXHIBITION CUM SALE        | 4 IQAC, SWOC,Admission, Academic calendar,Exam ,prospectus comm. | 2   | MON  |

| DAYS | JUNE             | JULY                          | AUGUST                                                                        | SEPTEMBER                                                          | OCTOBER                                                                    | NOVEMBER | DECEMBER                                 | JANUARY                                                   | FEBRUARY                                                            | MARCH                                                                | APRIL                                                                                                                                                    | MAY | DAYS |
|------|------------------|-------------------------------|-------------------------------------------------------------------------------|--------------------------------------------------------------------|----------------------------------------------------------------------------|----------|------------------------------------------|-----------------------------------------------------------|---------------------------------------------------------------------|----------------------------------------------------------------------|----------------------------------------------------------------------------------------------------------------------------------------------------------|-----|------|
|      |                  |                               |                                                                               | Adol.(F.Y.):HD                                                     |                                                                            |          |                                          |                                                           |                                                                     |                                                                      | Meeting                                                                                                                                                  |     |      |
| TUE  | 9                | 7<br>Orientati<br>on to F.Y.  | 4Comp: FSN                                                                    | 8 Training : Hand<br>Embroidery to<br>self help group :<br>TEXTILE | 6 Visits: SCIENCE<br><br>Guest Lecture on<br>health related<br>issues: NSS | 10       | 8                                        | 5                                                         | 9 Seminar on<br>Waste Mgt.: NSS                                     | 9                                                                    | 5 Staff<br>Sec.& Staff<br>Aca; UGC<br>proposal &<br>circular,Uni<br>. Affiliation,<br>BC<br>Cell,Studen<br>t Council,<br>Comp.<br>exam<br>meeting        | 3   | TUE  |
| WED  | 10 Staff Meeting | 8<br>Orientati<br>on to F.Y . | 5                                                                             | 9 Group<br>Discussion &<br>Pres. on Literacy<br>:NSS:              | 7                                                                          | 11       | 9                                        | 6 Guest<br>Lecture :<br>Personal<br>Care/Yoga:<br>SCIENCE | 10 SPORTS:<br>INTERCLASS<br>COMP                                    | 10                                                                   | 6 Publicity,<br>Research,<br>Anti<br>Ragging,Col<br>lege Mag;<br>Parent –<br>alu.<br>Asso;Teach<br>ing aid<br>comm.<br>meeting                           | 4   | WED  |
| THU  | 11               | 9                             | 6 Workshop<br>: For<br>Pregnant &<br>Lactating<br>Mothers:<br>FSN             | 10                                                                 | 8                                                                          | 12       | 10                                       | 7                                                         | 11 SAHAKAR<br>MAHARSHI<br>SHANKARRAO<br>MOHITE PATIL<br>DEATH ANNI. | 11                                                                   | 7 Term<br>End Exam:<br>EXAM<br><br>Discipline,c<br>ampus<br>maint;<br>ladies<br>room,<br>planning,<br>Health<br>center,<br>Feed back<br>comm.<br>meeting | 5   | THU  |
| FRI  | 12               | 10                            | 7<br>Presentation.<br>On various<br>trends in<br>women<br>apparel:<br>TEXTILE | 11                                                                 | 9                                                                          | 13       | 11 Visit : Garment<br>care Unit :TEXTILE | 8                                                         | 12 TEXTILE Sci.:<br>FASHION SHOW                                    | 12<br>Presentation.<br>On various<br>fabric<br>textures :<br>TEXTILE | 8<br>Computer<br>edu;<br>Remedial<br>coaching,<br>Stock<br>main;<br>Library<br>adv;<br>YCMOU,                                                            | 6   | FRI  |

| DAYS | JUNE                                                                                                            | JULY                                                                  | AUGUST                                         | SEPTEMBER                            | OCTOBER                 | NOVEMBER                                  | DECEMBER            | JANUARY                                                    | FEBRUARY                                  | MARCH                                                                  | APRIL                                                                                                      | MAY | DAYS |
|------|-----------------------------------------------------------------------------------------------------------------|-----------------------------------------------------------------------|------------------------------------------------|--------------------------------------|-------------------------|-------------------------------------------|---------------------|------------------------------------------------------------|-------------------------------------------|------------------------------------------------------------------------|------------------------------------------------------------------------------------------------------------|-----|------|
|      |                                                                                                                 |                                                                       |                                                |                                      |                         |                                           |                     |                                                            |                                           |                                                                        | Gymkhana & sports Comm. meeting                                                                            |     |      |
| SAT  | 13                                                                                                              | 11 World Population day Poster Comp.: SCIENCE<br><br>Essay Comp : NSS | 8                                              | 12                                   | 10                      | 14                                        | 12                  | 9                                                          | 13                                        | 13                                                                     | 9 Counseling cell, Sexual harr; Cultural, NSS;Hostel, Grivance redressal , Home Sci. Asso. Comm.. meeting. | 7   | SAT  |
| SUN  | 14                                                                                                              | 12                                                                    | 9                                              | 13                                   | 11                      | 15                                        | 13                  | 10                                                         | 14                                        | 14                                                                     | 10                                                                                                         | 8   | SUN  |
| MON  | 15 COMMENCEMENT OF SEM I,III &V<br><br>IQAC, SWOC Admission, Academic calendar,Exam ,prospectus comm. Meeting   | 13 Guest Lect: Imp. of Sports : SPORTS                                | 10 Medicine Collection :SCIENCE                | 14                                   | 12 Term End Exams: EXAM | 16                                        | 14                  | 11 BALMELAWA & exhibition :HD                              | 15 RATNAI MAHOTSAV                        | 15 GRAHAK DIN CELE. :ART EXHIBITION                                    | 11                                                                                                         | 9   | MON  |
| TUE  | 16 Staff Sec.& Staff Aca; UGC proposal & circular,Uni. Affiliation, BC Cell,Student Council, Comp. exam meeting | 14                                                                    | 11 Workshop : Premarital preparation (s.y.):HD | 15 Guest Lecture on Stress MGT : NSS | 13                      | 17                                        | 15 NSS:SPECIAL CAMP | 12 Birth Anni. Of Rajmata Jijau/Youvak Din : CULTURAL/NS S | 16                                        | 16 Guest Lecture : Need of Guidance & Counseling in schools (T.Y.): HD | 12                                                                                                         | 10  | TUE  |
| WED  | 17 Publicity, Research, Anti Ragging,College Mag; Parent –alu. Asso;Teaching aid comm. meeting                  | 15 Seminar on legal provisions for women empowerment(T.Y.): HD        | 12                                             | 16                                   | 14                      | 18 Inter Colligate Atheletic Meet: SPORTS | 16                  | 13 Seminar : Communicabl e diseases & prevention: SCIENCE  | 17                                        | 17                                                                     | 13                                                                                                         | 11  | WED  |
| THU  | 18 Discipline, campus maint; ladies room, planning, Health center, Feed back comm. meeting                      | 16                                                                    | 13 Film Show on Water Conservatio n: NSS       | 17                                   | 15                      | 19                                        | 17                  | 14 SAHAKAR MAHARSHI SHANKARRAO MOHITEPATIL BIRTH ANNI.     | 18 Parnt Education Prog. : HD             | 18                                                                     | 14                                                                                                         | 12  | THU  |
| FRI  | 19 Computer edu; Remedial coaching, Stock                                                                       | 17SELECTI ON OF                                                       | 14                                             | 18                                   | 16                      | 20                                        | 18                  | 15                                                         | 19 SURVEYS & Discussion on health related | 19                                                                     | 15                                                                                                         | 13  | FRI  |

| DAYS | JUNE                                                                                                                          | JULY                                                                                                           | AUGUST                                                    | SEPTEMBER                              | OCTOBER                         | NOVEMBER                                         | DECEMBER                                        | JANUARY                                               | FEBRUARY                                         | MARCH                      | APRIL | MAY | DAYS |
|------|-------------------------------------------------------------------------------------------------------------------------------|----------------------------------------------------------------------------------------------------------------|-----------------------------------------------------------|----------------------------------------|---------------------------------|--------------------------------------------------|-------------------------------------------------|-------------------------------------------------------|--------------------------------------------------|----------------------------|-------|-----|------|
|      | main; Library adv;<br>YCMOU,<br>Gymkhana &<br>sports Comm.<br>meeting                                                         | NSS<br>VOL.&<br>ADMISSIO<br>N.                                                                                 |                                                           |                                        |                                 |                                                  |                                                 |                                                       | topics.:SCIENCE                                  |                            |       |     |      |
| SAT  | 20 Counseling cell,<br>Sexual harr;<br>Cultural,<br>NSS;Hostel,Grivan<br>ce redressal ,<br>Home Sci. Asso.<br>Comm.. meeting. | 18                                                                                                             | 15Independ<br>ance Day                                    | 19                                     | 17 Workshop on<br>Food Art: FSN | 21                                               | 19 Distribution of<br>Nutritious Recipe:<br>FSN | 16                                                    | 20                                               | 20                         | 16    | 14  | SAT  |
| SUN  | 21                                                                                                                            | 19                                                                                                             | 16                                                        | 20                                     | 18                              | 22                                               | 20                                              | 17                                                    | 21                                               | 21                         | 17    | 15  | SUN  |
| MON  | 22                                                                                                                            | 20<br>NSS:ORI.<br>BY PO TO<br>NSS<br>VOL.Mark<br>et Survey<br>:SCIENCE                                         | 17                                                        | 21 Visit :<br>Counselling Cell :<br>HD | 19                              | 23 Admissions :<br>Term II                       | 21 Exhibition: FSN<br><br>Food Stall: FSN       | 18<br>WORKSHO:Ga<br>rment<br>construction<br>:TEXTILE | 22                                               | 22                         | 18    | 16  | MON  |
| TUE  | 23                                                                                                                            | 21                                                                                                             | 18                                                        | 22                                     | 20                              | 24 Guest<br>lecture on<br>traffic rules :<br>NSS | 22                                              | 19                                                    | 23 Guest Lecture<br>on Food<br>Preservation: FSN | 23                         | 19    | 17  | TUE  |
| WED  | 24                                                                                                                            | 22                                                                                                             | 19                                                        | 23                                     | 21                              | 25                                               | 23                                              | 20:Workshop<br>on EI : HD                             | 24                                               | 24                         | 20    | 18  | WED  |
| THU  | 25Guest lecture<br>on reproductive<br>health care(F.Y.) :<br>HD                                                               | 23                                                                                                             | 20<br>Workshop :<br>Internet<br>Surfing :<br>SCIENCE      | 24 NSS Day<br>Celebration: NSS         | 22                              | 26                                               | 24                                              | 21                                                    | 25                                               | 25                         | 21    | 19  | THU  |
| FRI  | 26 Death anni. Of<br>Smt.<br>Ratnaprabhadevi<br>Mohite Patil:<br>CULTURAL                                                     | 24                                                                                                             | 21Workshop<br>: various<br>printing<br>styles<br>:TEXTILE | 25                                     | 23                              | 27                                               | 25                                              | 22                                                    | 26                                               | 26                         | 22    | 20  | FRI  |
| SAT  | 27Medical<br>Checkup : SCIENCE                                                                                                | 25 Birth<br>Anni. Of<br>Smt.<br>Ratnapra<br>bhadevi<br>Mohite<br>Patil &<br>Wel Come<br>Party for<br>Fresher's | 22                                                        | 26                                     | 24                              | 28 Khel<br>Melawa : HD                           | 26                                              | 23 Workshop<br>on Bakery<br>Products: FSN             | 27                                               | 27                         | 23    | 21  | SAT  |
| SUN  | 28                                                                                                                            | 26                                                                                                             | 23                                                        | 27                                     | 25                              | 29                                               | 27                                              | 24                                                    | 28                                               | 28                         | 24    | 22  | SUN  |
| MON  | 29 Workshop:<br>Natural Dyes                                                                                                  | 27                                                                                                             | 24 Youth<br>Festival                                      | 28 Comp: Fabric<br>painting:TEXTILE    | 26                              | 30                                               | 28                                              | 25                                                    | 29 Science Day :<br>Quiz Comp                    | 29 Practice<br>Exam : EXAM | 25    | 23  | MON  |

| DAYS | JUNE     | JULY                                    | AUGUST                           | SEPTEMBER | OCTOBER | NOVEMBER | DECEMBER | JANUARY               | FEBRUARY | MARCH | APRIL            | MAY | DAYS |
|------|----------|-----------------------------------------|----------------------------------|-----------|---------|----------|----------|-----------------------|----------|-------|------------------|-----|------|
|      | :TEXTILE |                                         | CULTURAL.                        |           |         |          |          |                       | SCIENCE  |       |                  |     |      |
| TUE  | 30       | 28                                      | 25                               | 29        | 27      |          | 29       | 26 Republic Day       |          | 30    | 26               | 24  | TUE  |
| WED  |          | 29                                      | 26                               | 30        | 28      |          | 30       | 27                    |          |       | 27               | 25  | WED  |
| THU  |          | 30 Exhibition on Human Rights (S.Y.):HD | 27 Compitition: Jagar Janivancha |           | 29      |          | 31       | 28                    |          |       | 28               | 26  | THU  |
| FRI  |          | 31                                      | 28 Temple Waste MGT : NSS        |           | 30      |          |          | 29                    |          |       | 29               | 27  | FRI  |
| SAT  |          |                                         | 29                               |           |         |          |          | 30 Comp: Debate : NSS |          |       | 30 Staff Meeting | 28  | SAT  |
| SUN  |          |                                         | 30                               |           |         |          |          | 31                    |          |       |                  | 29  | SUN  |
| MON  |          |                                         | 31                               |           |         |          |          |                       |          |       |                  | 30  | MON  |
| TUE  |          |                                         |                                  |           |         |          |          |                       |          |       |                  | 31  | TUE  |